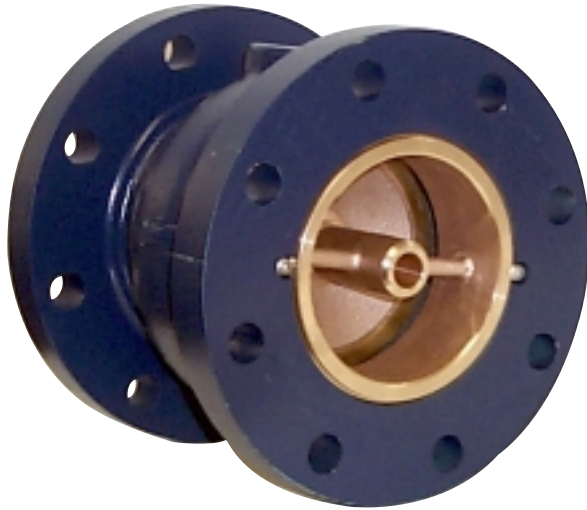


Silent Globe Check Valve



- Operates Horizontally or Vertically
- Watertight Seating
- Field Replaceable Parts
- Factory Mutual Approved – Various Sizes
- Optional Resilient Seat

The Cla-Val Series 581 Silent Globe Check Valve has a spring-loaded poppet that allows the valve to close before flow reversal occurs, resulting in a silent, non-slam closure. It is a truly silent check valve. For ease of installation, the valve can be installed in vertical or horizontal positions with flow up or flow down. Silent Globe Check Valves are available in 2 1/2" to 42" sizes, with either a 125 lb. or 250 lb. pressure class rating. Silent Globe Check Valves in 3" to 10" sizes have enough outlet clearance to allow them to be bolted directly to wafer style butterfly valves.

Constructed of a cast iron body with bronze trim, the Cla-Val Silent Globe Check Valve offers watertight shutoff with metal-to-metal seating. For special applications, stainless steel trim and Buna-N® resilient seats are available as options. All materials conform to ASTM specifications, ensuring long lasting reliable performance. As a confirmation of Cla-Val's commitment to quality, 2 1/2" to 12" 125 lb. class Series 581 valves are Factory Mutual approved.

SPECIFICATIONS

The silent globe check valve shall consist of a heavy cast iron body, bronze seat, bronze disc, and stainless steel spring. The valve disc shall be center guided at both ends with an integral shaft and shall be spring loaded for silent operation. The spring shall be helical or conical and stone tumbled to achieve a microfinish to resist mineral deposits. For ease of maintenance, the seat and disc shall be replaceable in the field.

Check valve shall be capable of silent operation when installed in vertical or horizontal positions with either flow up or flow down. The flow area through the body shall be equal to or greater than the cross-section area of the equivalent pipe size. Sizes 3" to 10" shall allow bolting a wafer style butterfly valve directly to the outlet flange without a spool piece. The valve shall be a Cla-Val Series 581 Silent Globe Check Valve.

All materials of construction shall conform to ASTM specifications as follows:

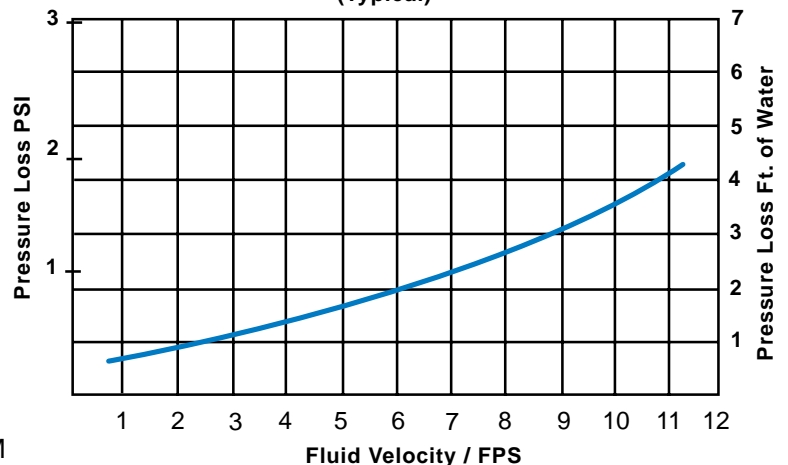
Valve Body: Cast Iron ASTM A126 Class B

Disc & Seat: Bronze ASTM B584

Spring: Stainless Steel ASTM A313.5
Stone Tumbled

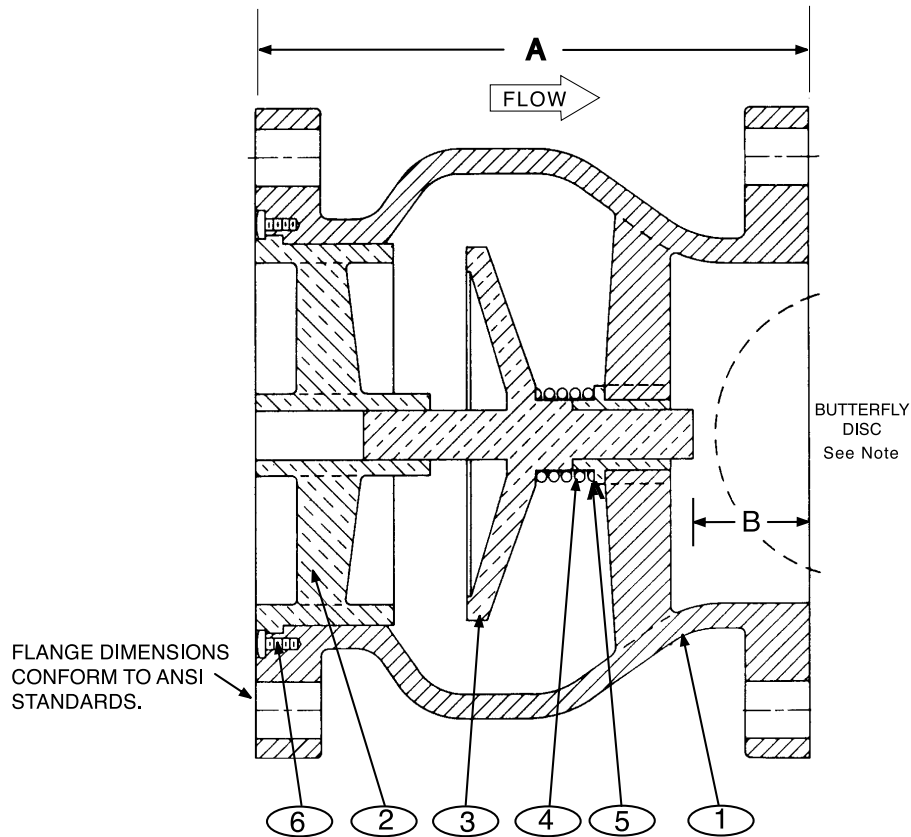
Sizes: 2 1/2 " to 42"

Series 581 Pressure Loss Curve
(Typical)



Silent Globe Check Valve

SERIES 581



Dimensions (In Inches)

ANSI CLASS 125 AND 250				
Size	Weight Lbs.		A	B
	125	250		
2 1/2	24	30	5-1/2	1
3 *	29	36	6	1-3/8
4 *	42	59	7- 1/4	1-3/4
5 *	52	78	8-1/2	2
6 *	73	103	9-3/4	2-1/2
8 *	126	179	12-1/2	3-1/4
10 *	205	253	15-1/2	4-1/4
12	306	401	14-1/4	Spool Piece is Needed
14	380	511	15-3/4	
16	501	697	17-5/8	
18	724	959	18-3/4	
20	890	1180	20-5/8	
24	1220	1680	24	
30	2000	2375	29-1/4	
36	4421	5511	45	
42	7203	8663	50	

* FM Approved

Detail No.	Name	Material Description
1	Body	Cast Iron ASTM A126, Class B
2	Seat	Bronze ASTM B584**
3	Plug	Bronze ASTM B584
4	Spring	Stainless Steel T302 ASTM A313.5
5	Bushing	Bronze ASTM B584
6	Screw	Stainless Steel T304 ASTM A276

**Optional Resilient Seat

Temp. Rating	MAXIMUM SERVICE PRESSURE			
	ANSI B16.1 FLG. RATINGS			
	125 LB. CLASS		250 LB. CLASS	
	2" - 12"	14" - 42"	2" - 12"	14" - 42"
0-150° F	200	150	400	300
200° F	190	135	370	280
Test Pressure	300	230	600	450

NOTE: Sizes 3" to 10" designed to allow bolting a wafer style butterfly valve directly to the outlet flange without a spool piece.



CLA-VAL

PO Box 1325 Newport Beach CA 92659-0325
Phone: 949-722-4800 • Fax: 949-548-5441

CLA-VAL CANADA, LTD.

4687 Christie Drive
Beamsville, Ontario
Canada LOR 1B4
Phone: 905-563-4963
Fax: 905-563-4040

CLA-VAL SA

Chemin des Mesanges 1
CH-1032 Romanel/
Lausanne, Switzerland
Phone: 41-21-643-15-55
Fax: 41-21-643-15-50

©COPYRIGHT CLA-VAL 2001 Printed in USA
Specifications subject to change without notice.

www.cla-val.com

Represented By: