



— SERIES — **580**

Silent Wafer Check Valve



- Short Lay Length
- Watertight Seating
- Field Replaceable Parts
- Factory Mutual Approved
- Optional Resilient Seat

The Cla-Val Series 580 Silent Wafer Check Valve has a spring-loaded poppet that allows the valve to close before flow reversal occurs, resulting in a silent, non-slam closure. It is a truly silent check valve. For ease of installation, the valve can be installed in vertical or horizontal positions with flow up or flow down. The short lay length of the valve allows for a space-saving design. Silent Wafer Check Valves are available in sizes 2" to 10", with either a 125 lb. or 250 lb. pressure class rating.

Constructed of a cast iron body with bronze trim, the Cla-Val Silent Wafer Check Valve offers watertight shutoff with metal-to-metal seating. For special applications, stainless steel trim and Buna-N® resilient seats are available as options. All materials conform to ASTM specifications, ensuring long lasting reliable performance. As a confirmation of Cla-Val's commitment to quality, all Series 580 125 lb. class valves are Factory Mutual approved.

SPECIFICATIONS

The silent wafer check valve shall consist of a heavy cast iron body, bronze seat, bronze disc, and stainless steel spring. The valve disc shall be center guided at both ends with an integral shaft and shall be spring loaded for silent operation. The spring shall be helical or conical and stone tumbled to achieve a microfinish to resist mineral deposits. For ease of maintenance, the seat and disc shall be replaceable in the field.

Check valve shall be capable of silent operation when installed in vertical or horizontal positions with either flow up or flow down. The flow area through the body shall be equal to or greater than the cross-section area of the equivalent pipe size. The valve shall be a Cla-Val Series 580 Silent Wafer Check Valve.

All materials of construction shall conform to ASTM specifications as follows:

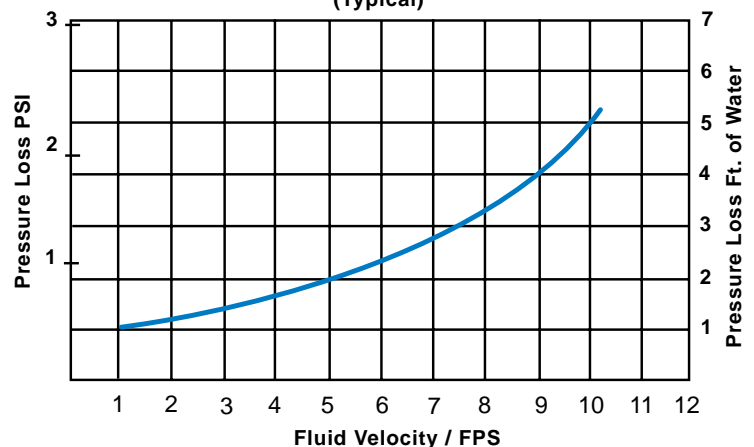
Valve Body: Cast Iron ASTM A126 Class B

Disc & Seat: Bronze ASTM B584

Spring: Stainless Steel ASTM A313.5
Stone Tumbled

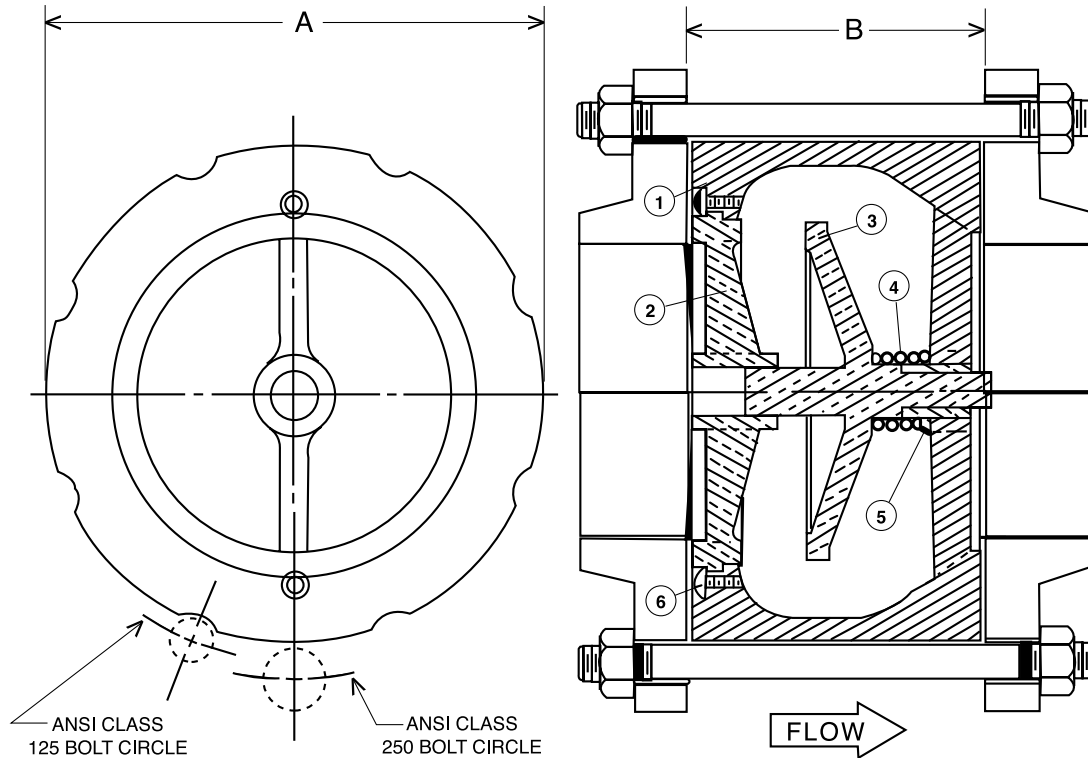
Sizes: 2" to 10"

Series 580 Pressure Loss Curve
(Typical)



Silent Wafer Check Valve

Series 580



Detail No.	Name	Material Description
1	Body	Cast Iron ASTM A126, Class B
2	Seat	Bronze ASTM B584**
3	Disc	Bronze ASTM B584
4	Spring	Stainless Steel T302 ASTM A313.5
5	Bushing	Bronze ASTM B584
6	Screw	Stainless Steel T304 ASTM A276

**Optional Resilient Seat

Note: Flanges, bolts, nuts, and gaskets, shown for illustration purposes only.



Dimensions (In Inches)

ANSI CLASS 125				ANSI CLASS 250		
Size	Weight lbs.	A	B	Weight lbs.	A	B
2 *	6	4-1/4	2-5/8	6	4-1/4	2-5/8
2 1/2 *	7	5	2-7/8	7	5	2-7/8
3 *	12	5-3/4	3-1/8	12	5-3/4	3-1/8
4 *	18	7	4	18	7	4
5 *	27	8-3/8	4-3/4	27	8-3/8	4-3/4
6 *	42	9-3/4	5-1/2	42	9-3/4	5-1/2
8 *	85	13-3/8	6-1/2	86	13-3/8	6-1/2
10 *	146	16	8-1/4	137	16	8-1/4

Temp. Rating	MAXIMUM SERVICE PRESSURE	
	ANSI B16.1 FLG. RATINGS	
	125 LB. CLASS	250 LB. CLASS
	2" - 10"	2" - 10"
0-150° F	200	400
200° F	190	370
Test Pressure	300	600

* FM Approved



CLA-VAL

PO Box 1325 Newport Beach CA 92659-0325
Phone: 949-722-4800 • Fax: 949-548-5441

CLA-VAL CANADA, LTD.

4687 Christie Drive
Beamsville, Ontario
Canada L0R 1B4
Phone: 905-563-4963
Fax: 905-563-4040

CLA-VAL SA

Chemin des Mesanges 1
CH-1032 Romanel/
Lausanne, Switzerland
Phone: 41-21-643-15-55
Fax: 41-21-643-15-50

©COPYRIGHT CLA-VAL 2001 Printed in USA
Specifications subject to change without notice.

www.cla-val.com

Represented By: