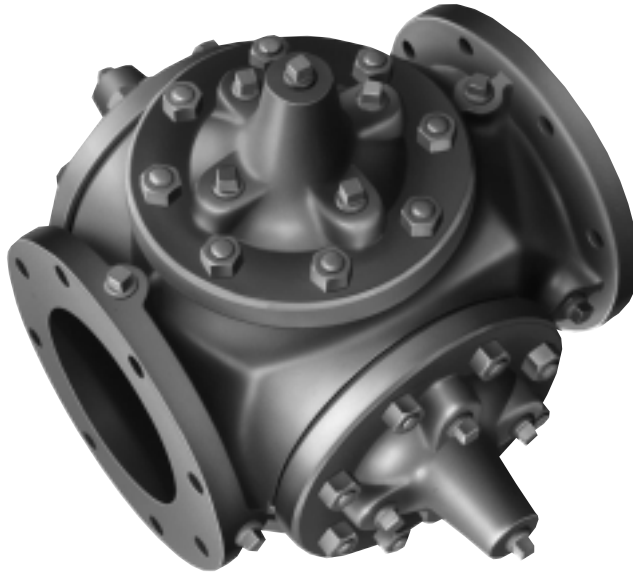


Radial Valve



8" size illustrated

- Full Hydraulic Operation
- Simple Proven Design
- Drip Tight Closing
- Packless Construction, No Lubrication
- Pilot Controlled

The Cla-Val Model 4100 Radial Valve is the most compact, yet versatile, automatic valve available. It contains four separate hydraulically operated diaphragm globe valves in one body. This valve can be used in every type of piping system requiring remote control, pressure regulation, solenoid operation, rate of flow control, liquid level control, check valve operation, or any combination of these functions.

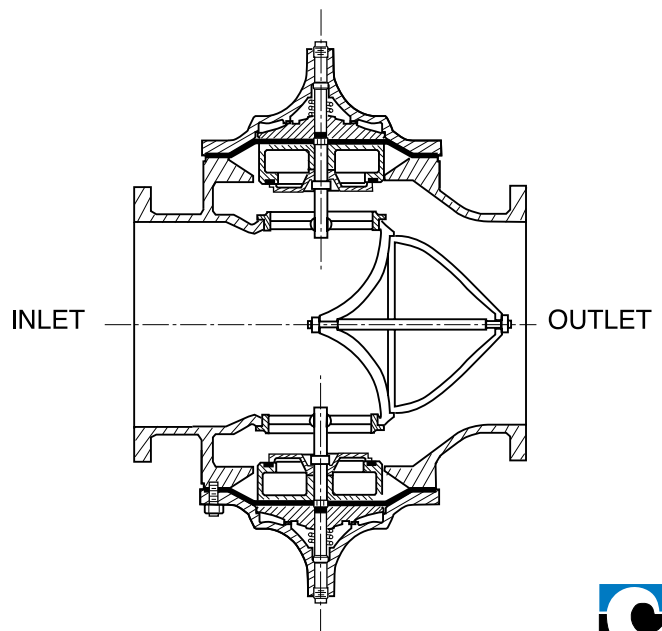
The Model 4100 consists of nine major components: The body, four diaphragm assemblies, and four covers. The body is constructed of ductile iron and all wetted surfaces are coated with epoxy 12 mils thick. Each diaphragm assembly forms a sealed chamber in the upper portion of each cover, separating operating pressure from line pressure. The diaphragm assemblies are the only moving parts with each assembly guided top and bottom by a precision machined stem. Each diaphragm assembly includes an FDA approved non-wicking diaphragm of nylon fabric bonded with synthetic rubber, a disc retainer, and a synthetic rubber disc, which forms a drip-tight seal with the valve seat. The valves packless construction and simplicity of design assures long life and dependable maintenance-free operation.

Typical Application

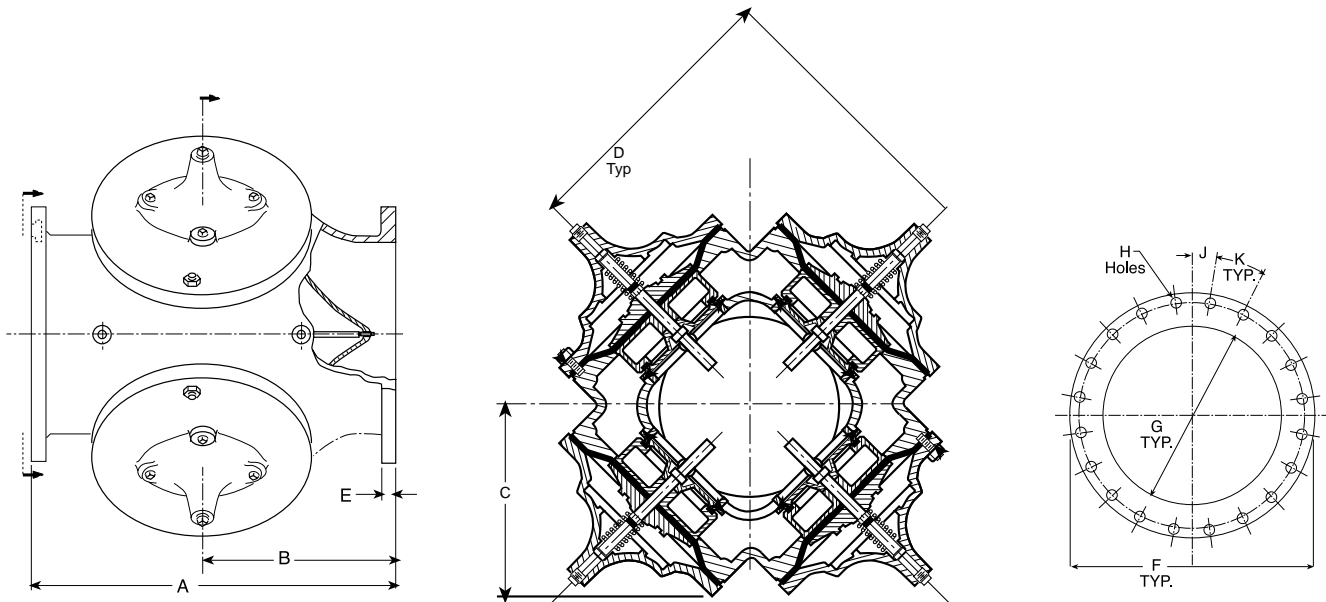
The Model 4100 Radial Valve is especially well suited for applications where the flow is expected to vary over a wide range. Due to the unique construction of this valve, each diaphragm assembly can operate simultaneously, or sequentially. In addition, each diaphragm assembly could, if required, perform a separate function at a different pressure setting than any of the other diaphragm assemblies.

Flow

| Size | Suggested Flow — GPM | | CV |
|------|----------------------|----------------------|------|
| | Maximum Continuous | Maximum Intermittent | |
| 8" | 3200 | 7000 | 800 |
| 16" | 11000 | 25000 | 3080 |
| 24" | 25000 | 55000 | 6900 |



Dimensions (In Inches)



| Valve Size | Flanges* | "A" | "B" | "C" | "D" | "E" | "F" | "G" | "H" – Holes | | | "J" | "K" | Approx. Weight Of Assembly |
|------------|----------------|-------|-------|-------|-------|------|-------|-------|-------------|-------|-------------|---------|---------|----------------------------|
| | | | | | | | | | No. | Dia. | Bolt Circle | | | |
| 8" | 125 ANSI B16.1 | 18.00 | 10.00 | 9.50 | 13.25 | 1.13 | 13.50 | 8.00 | 8 | .875 | 11.75 | 22 1/2° | 45 | 1385 Lbs. |
| 8" | 250 ANSI B16.2 | 19.00 | 10.50 | 9.50 | 13.25 | 1.63 | 15.00 | 8.00 | 12 | 1.00 | 13.00 | 15° | 30° | |
| 16" | 125 ANSI B16.1 | 36.00 | 18.00 | 17.50 | 23.13 | 1.44 | 23.50 | 15.25 | 16 | 1.125 | 21.25 | 11 1/4° | 22 1/2° | 3350 Lbs. |
| 16" | 250 ANSI B16.2 | 37.63 | 18.81 | 17.50 | 23.13 | 2.25 | 25.50 | 15.25 | 20 | 1.375 | 22.50 | 9° | 18° | |
| 24" | 125 ANSI B16.1 | 46.50 | 24.75 | 24.50 | 32.50 | 1.88 | 32.00 | 23.25 | 20 | 1.375 | 29.50 | 9° | 18° | 4,530 Lbs. |
| 24" | 250 ANSI B16.2 | 50.88 | 25.63 | 24.50 | 32.50 | 2.75 | 36.00 | 23.25 | 24 | 1.688 | 32.00 | 7 1/2° | 15° | |

*ANSI standards are for flange dimensions only.

Specifications

Sizes 8", 16" and 24" flanged

End Detail Flanged: 150 & 300 ANSI B16.1

Pressure Ratings Max. Recommended Pressure:

150 Class, 250 psi
300 Class, 400 psi.

Temperature Range Water: to 180°F. Max
Petroleum Products: - 40° to 180°F. Max

Materials:

Main Valve Body & Cover:
Ductile Iron ASTM 536
ANSI B16.42

Main Valve Trim:
Stainless Steel 303 Type

Rubber Parts:
Buna-N® Synthetic Rubber

Coating:
All wetted ferrous parts
coated with Epoxy to
AWWA C550-90
Water: to 175°F. Max



CLA-VAL

PO Box 1325 Newport Beach CA 92659-0325
Phone: 949-722-4800 • Fax: 949-548-5441

CLA-VAL CANADA, LTD.

4687 Christie Drive
Beamsville, Ontario
Canada LOR 1B4
Phone: 905-563-4963
Fax: 905-563-4040

CLA-VAL SA

Chemin des Mesanges 1
CH-1032 Romanel/
Lausanne, Switzerland
Phone: 41-21-643-15-55
Fax: 41-21-643-15-50

©COPYRIGHT CLA-VAL 2001 Printed in USA
Specifications subject to change without notice.

www.cla-val.com

Represented By: