

MANUAL FAUCETS

3300-CP



MeterMix® Lavatory Metering Faucet

Product Type

MeterMix® Lavatory Metering Faucet

Features & Specifications

- 4 3/4" C-C Integral Cast Brass Spout
- Vandal Proof 0.5 GPM (1.9 L/min) Econo-Flo Pressure Compensating Spray Outlet
- Metal Handle with Concealed Vandal Resistant Screw
- MVP™ Metering Adjustable Self Closing Cartridge
- 1/2" NPSM Supply Inlets with Coupling Nut for 3/8" or 1/2" Flexible Riser

Performance Specification

- Rating Operating Pressure: 20-125 PSI
- Rated Operating Temperature: 40-140°F

Warranty

- Lifetime Limited Faucet Warranty
- 5-Year Limited Cartridge Warranty
- 1-Year Limited Finish Warranty

Codes & Standards

- ASME A112.18.1M
- CSA B125.1
- ADA ANSI/ICC A117.1

Job Name _____

Item Number _____

Section/Tag _____

Model Specified _____

Architect _____

Engineer _____

Contractor _____

☐ Submitted as Shown ☐ Submitted with Variations

Date _____

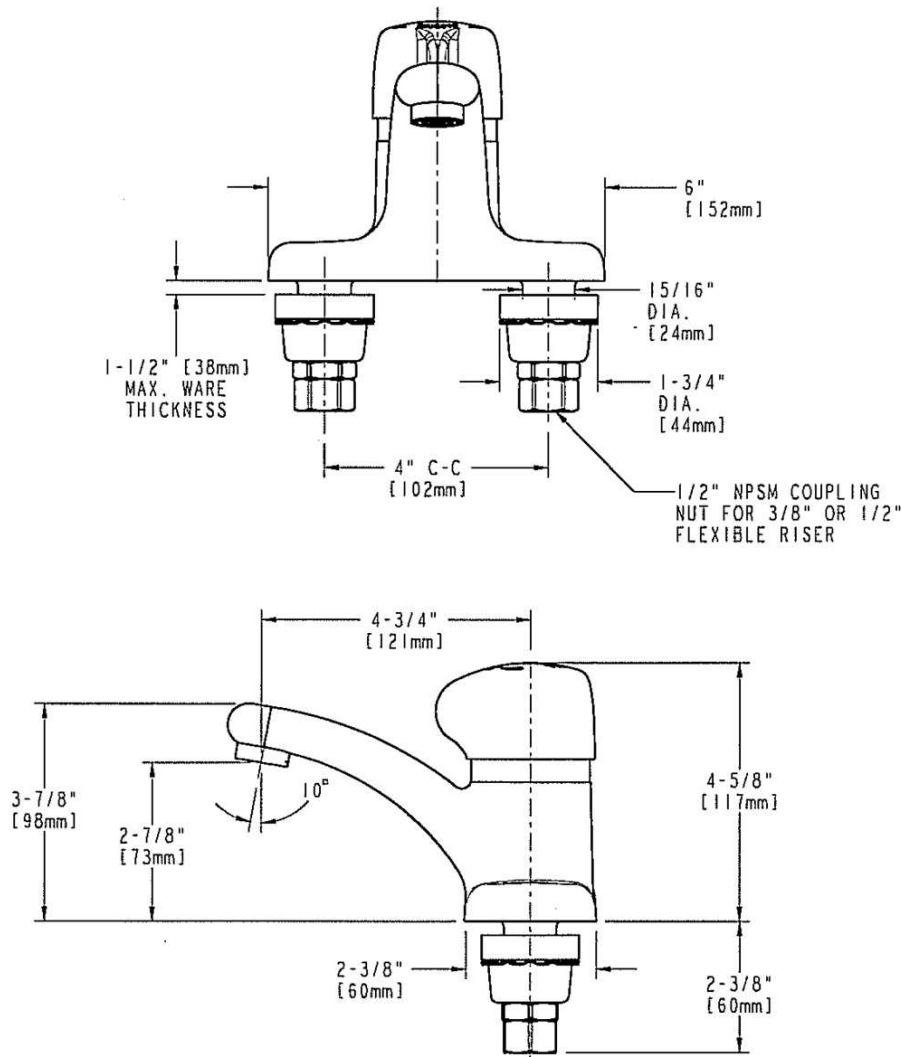


2100 South Clearwater Drive
Des Plaines, IL
P: 847/803-5000
F: 847/803-5454
Technical: 800/TEC-TRUE
www.chicagofaucets.com

MeterMix® Lavatory Metering Faucet

Architect/Engineer Specification

Chicago Faucets No. 3300-CP, polished chrome plated solid brass construction with integral shanks. 4-3/4" C-C integral spout. 0.5 GPM pressure compensating vandal-resistant spray outlet. Metal handle with integral temperature control. 0.25 Gal/Cycle push button self-closing metering valve with adjustable cycle time feature. Inlet shank contains standard 1/2" NPSM threaded inlet with coupling nut for connection to 3/8" or 1/2" standard lavatory riser. All mounting hardware is included for standard lavatory installations. This product meets ADA ANSI/ICC A117.1 requirements and is tested and certified to industry standards: ASME A112.18.1M, and CSA B125.1.



Operation and Maintenance

Installation should be in accordance with local plumbing codes. Flush all pipes thoroughly before installation. After installation, remove spout outlet or flow control and flush faucet thoroughly to clear any debris. Care should be taken when cleaning the product. Do not use abrasive cleaners, chemicals or solvents as they can result in surface damage. Use mild soap and warm water for cleaning and protecting the life of Chicago Faucet products. For specific operation and maintenance refer to the installation instructions and repair parts documents that are located at www.chicagofaucets.com.

Chicago Faucets, member of the Geberit Group, is the leading brand of commercial faucets and fittings in the United States, offering a complete range of products for schools, laboratories, hospitals, office buildings, food service, airports and sport facilities. Call 1.800.TECTRUE or 1.847.803.5000 Option 1 for installation or other technical assistance.



2100 South Clearwater Drive
Des Plaines, IL
P: 847/803-5000
F: 847/803-5454
Technical: 800/TEC-TRUE
www.chicagofaucets.com