

# UC Open XP



Turn to the Experts.™

**Part Number: OPN-UCXP**

The UC Open XP Controller provides auxiliary building control to interface with lighting, fans, pumps, and other HVAC equipment. The UC Open XP's pre-engineered algorithms provide simple building integration for commercial applications with 24 I/O point capability. The UC Open XP also provides support for 24 additional I/O points through the use of the UC Open XP IO Expander. When combined, these controllers can support up to 48 total I/O points for even greater flexibility. The UC Open XP also features native BACnet communications and plug-and-play connectivity to the Carrier i-Vu Open Control System. The Carrier i-Vu Open Control System combines state-of-the-art Carrier equipment, plug-and-play controllers, and the powerful, web-based i-Vu user interface to form a cohesive, intuitive, and fully-integrated BACnet® Building Automation System.

## Application Features

- Comprehensive library of pre-engineered algorithms available through the ApplicationBuilder Tool
- Supported functions include: Constant Volume (CV) Cooling and Heating Control, Dehumidification, CV Mixed Air Damper Optimization, Fan Control, Pump Control, Lighting Control, Indoor Air Quality, Generic PID Control, Time Scheduling with/without Override, Analog Temperature Control, Discrete Interlock, Discrete Staging Control, Permissive Interlock, Set Point Reset, Optimal Start/Stop, WSHP Loop Control
- Supports Carrier SPT room sensors, which allow for local setpoint adjustment and local overrides

## System Benefits

- Integrated Carrier linkage algorithm for plug-and-play integration with Carrier systems
- Fully plug-and-play with the Carrier i-Vu Open Control System
- Supports demand limiting for maximum energy savings

## Hardware Features

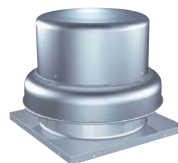
- Real time-clock keeps time in the event of power failure
- UC Open XP supports up to 24 I/O points; add UC Open XP IO Expander to support up to 48 I/O points
- Native BACnet MS/TP communications



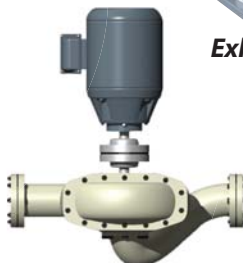
**Boilers**



**Lighting**



**Exhaust Fans**



**Water Loop Control**

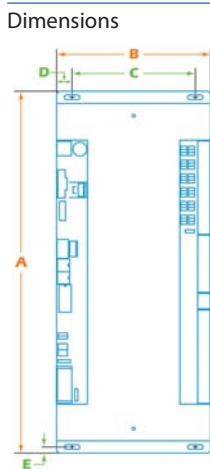


**Electric Meters**

# Specifications

Part Number: OPN-UCXP

BACnet Support	Conforms to the Advanced Application Controller (B-AAC) Standard Device Profile as defined in BACnet 135-2001 Annex L
Communication Ports	BACnet port: EIA-485 port for BACnet MS/TP communications (9600 bps, 19.2 kbps, 38.4 kbps, & 76.8 kbps); Local Access port: For system start-up and troubleshooting using a PC or BACview (115.2 kbps); Rnet port: For connecting SPT room sensors. The Rnet port supports up to four SPT Standard sensors and one SPT Plus or SPT Pro sensor for averaging or high/low select control. Xnet Remote Expansion port: For connecting to a UC Open XP IO Expander via the Xnet network
Inputs	Twelve inputs, configurable for 0-10V, RTD/Thermistor/Dry contact, or 0-20mA. Inputs 1 and 2 may be used for pulse counting. All analog inputs have 12 bit A/D resolution.
Outputs	Six analog outputs - AOs 1 and 2 are configurable for 0-10V or 0-20mA; AOs 3 through 6 are 0-10V only. Analog outputs have 10 bit D/A resolution. Six binary outputs: Relay contacts rated at 5A resistive @ 250VAC; configured as dry contact, normally open or normally closed.
Protection	Incoming power and network connections are protected by non-replaceable internal solid-state polyswitches that reset themselves when the condition that causes a fault returns to normal. The power, network, input, and output connections are also protected against voltage transient and surge events.
Real Time Clock	Battery-backed real time clock
Battery	10-year Lithium CR2032 battery provides a minimum of 10,000 hours of trend data & time retention during power outages
Status Indicators	Visual (LED) status of power, running, and errors. LED indicators for transmit/receive for BACnet port and for each of the 12 outputs
Addressing	Rotary dip switches set BACnet MS/TP address of controller
Listed by	UL-916, FCC Part 15-Subpart B-Class A, CE EN50082-1997
Environmental Operating Range	-20°F to 140°F (-29°C to 60°C); 10 to 95% relative humidity, non-condensing. *For indoor use only
Power Requirements	24VAC $\pm$ 10%, 50 to 60Hz, 20 VA power consumption, single Class 2 source only, 100 VA or less



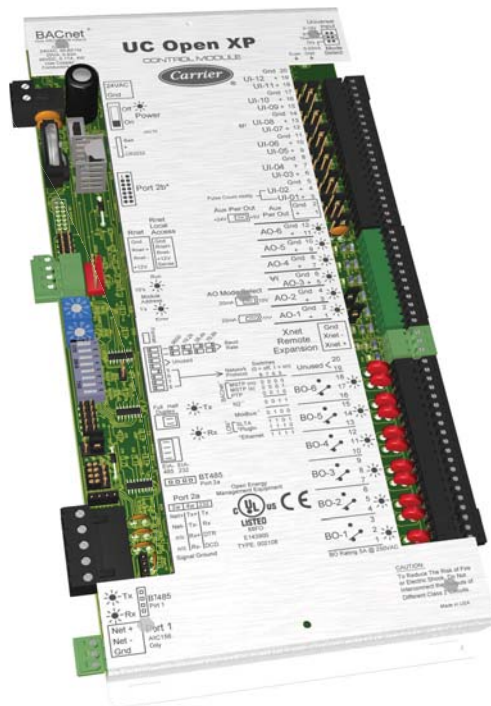
## Overall

- A: 11-13/16" (30 cm)
- B: 5" (12.7 cm)

## Mounting

- C: 4" (10.2 cm)
- D: 1/2" (10.3 cm)
- E: 13/64" (.5 cm)

Depth: 2" (5.1 cm)-min. panel depth  
Weight: 1.1 lbs (0.5 kg)



Turn to the Experts.™

CARRIER CORPORATION ©2009

A member of the United Technologies Corporation family. Stock symbol UTX. 11-808-455-01 Rev. 08/09

[www.carrier.com](http://www.carrier.com)  
1-800-CARRIER

Manufacturer reserves the right to discontinue, or change at any time, specifications or designs, without notice or without incurring obligations.