



Citrus. Not Salt

Amazingly compact nuvoH2O water softeners provide naturally conditioned water without the hassle of salt.

The nuvoH2O water softeners use a process called chelation (pronounced key-LAY-shun) to soften water. The nuvoH2O chelant, a proprietary citrus formulation, binds with hard water minerals so they cannot react with other elements to produce scale. Unlike salt-based softeners, nuvoH2O not only prevents hard water build-up, but it also removes existing scale. nuvoH2O - A better way to soften water.

Removes existing hard water scale and prevents scale build-up.

Eco-friendly - no salt, no waste water, no electricity.

Healthier skin and hair.

Softer, brighter clothing.

Use less soap, lotions and conditioners.

Compact design - fits almost anywhere.

Extends the life of your water heater, plumbing fixtures and appliances.

Developed from 25+ years of commercial experience.

Built-in By-pass and Off Settings - no need to plumb a by-pass loop.

FDA and NSF approved.

Lifetime warranty.



Home system

For homes up to 230 sq. mt. and normal water use

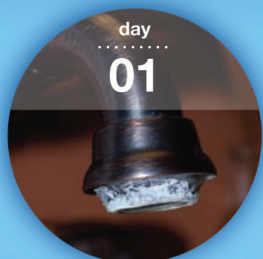
- *Size:* 127 mm x 610 mm
- *Weight:* 3000 gr.
- *Water flow:* 45-55 lt/min with 1" ports (minimal change to existing flow)
- *Maximum pressure:* 6.8 bar
- *Capacity:* about 132000 litres
- Uses 2" x 20" replacement cartridges
- Built-in pressure relief valve
- FDA & NSF approval
- EU certification



Studio system

For condos, townhomes and apartments that are less than 90 sq. mt. and low water use.

- *Size:* 127 mm x 356 mm
- *Weight:* 2000 gr.
- *Water flow:* 45-55 lt/min with 3/4" ports (minimal change to existing flow)
- *Maximum pressure:* 6.8 bar
- *Capacity:* about 76000 litres
- Uses 2" x 10" replacement cartridges
- Built-in pressure relief valve
- FDA & NSF approval
- EU certification



Actual customer images of hard-water buildup, scale...



which will clog and corrode your home's plumbing.



nuvoH2O is innovative by gradually removing existing scale....



to renew the life and performance of your pipes, fixtures and appliances.

Manor system

For up to 230 sq. mt. homes with much higher than normal water use

- *Size:* 203 mm x 635 mm
- *Weight:* 7950 gr.
- *Water flow:* 55-65 lt/min with 1" ports (minimal change to existing flow)
- *Capacity:* about 190000 litres
- Uses 4" x 20" replacement cartridges
- Built-in pressure relief valve
- FDA & NSF approval
- EU certification



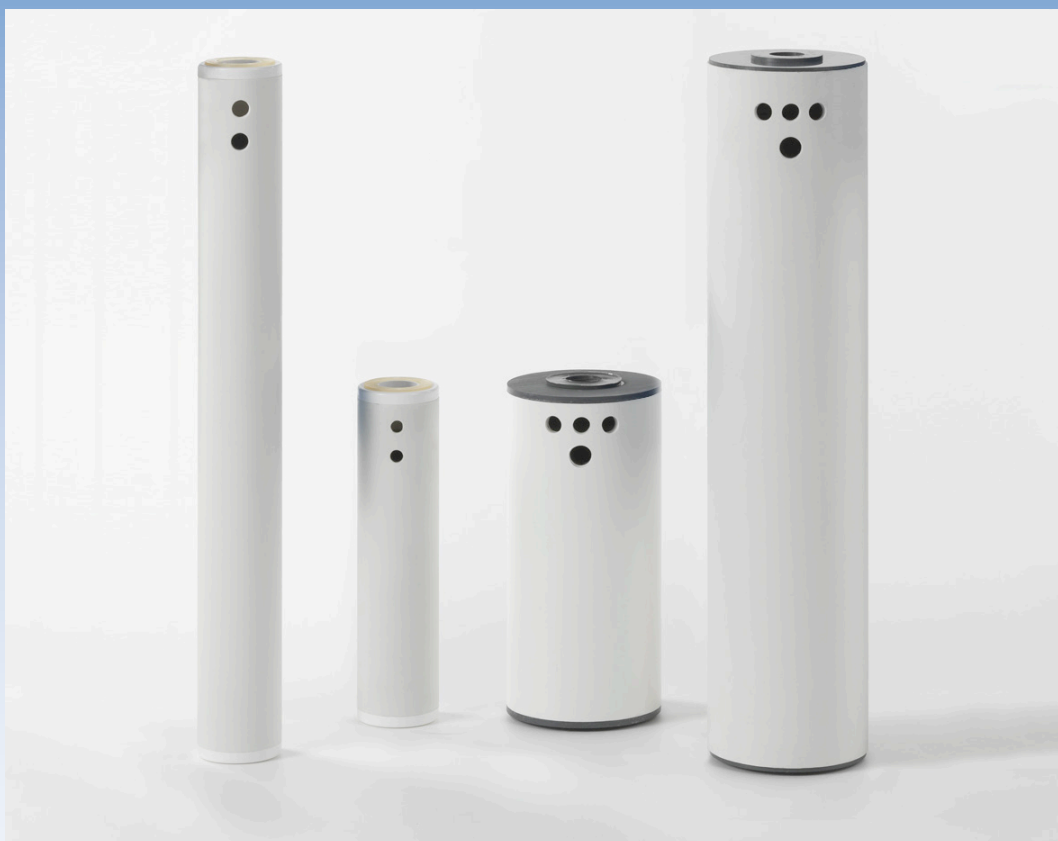
Euro Manor system

For up to 230 sq. mt. homes with much higher than normal water use

- *Size:* 203 mm x 375 mm
- *Weight:* 4550 gr.
- *Water flow:* 55-65 lt/min with 1" ports (minimal change to existing flow)
- *Capacity:* about 148000 litres
- *Maximum pressure:* 6.8 bar
- Uses 4" x 10" replacement cartridges
- Built-in pressure relief valve
- FDA & NSF approval
- EU certification



Natural and effective, nuvoH2O prevents and gradually removes existing scale, extending the life and performance of your pipes, fixtures, and appliances



Replacement Cartridges

Cartridge	Item #	Size	Weight
Studio Cartridge	HPS2516C	2" x 10"	560 gr.
Home Cartridge	HPWH2516C	2" x 20"	1200 gr.
Manor Cartridge	HPWH42516C	4" x 20"	4500 gr.
Euro Manor Cartridge	HPW42516C.5	4" x 10"	2100 gr.

