



# Maxicom<sup>2</sup> Update

*Royce Mason*  
*Product Manager - Central Control Products*

---

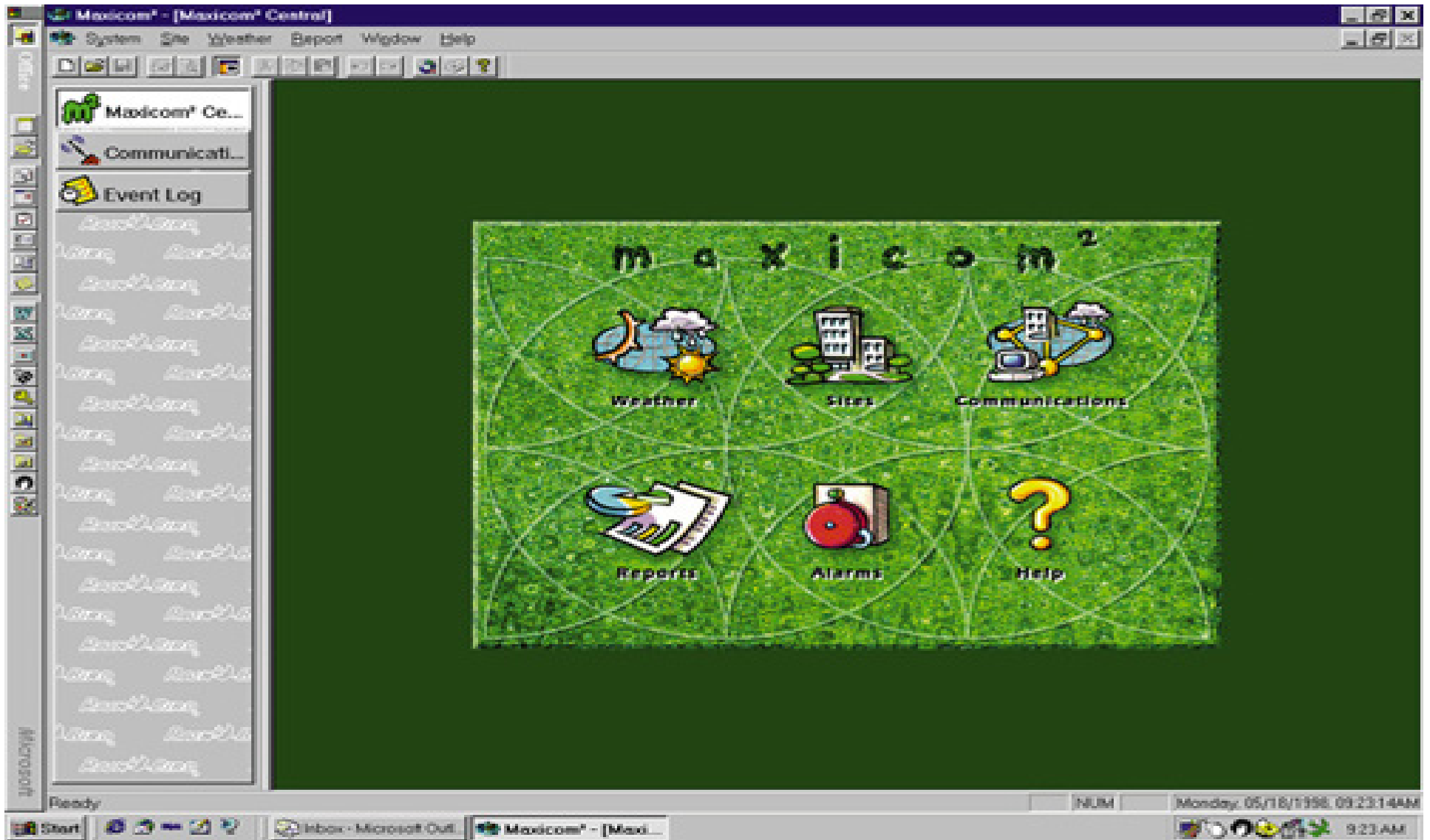
The Intelligent Use of Water.™

LEADERSHIP • EDUCATION • PARTNERSHIPS • PRODUCTS

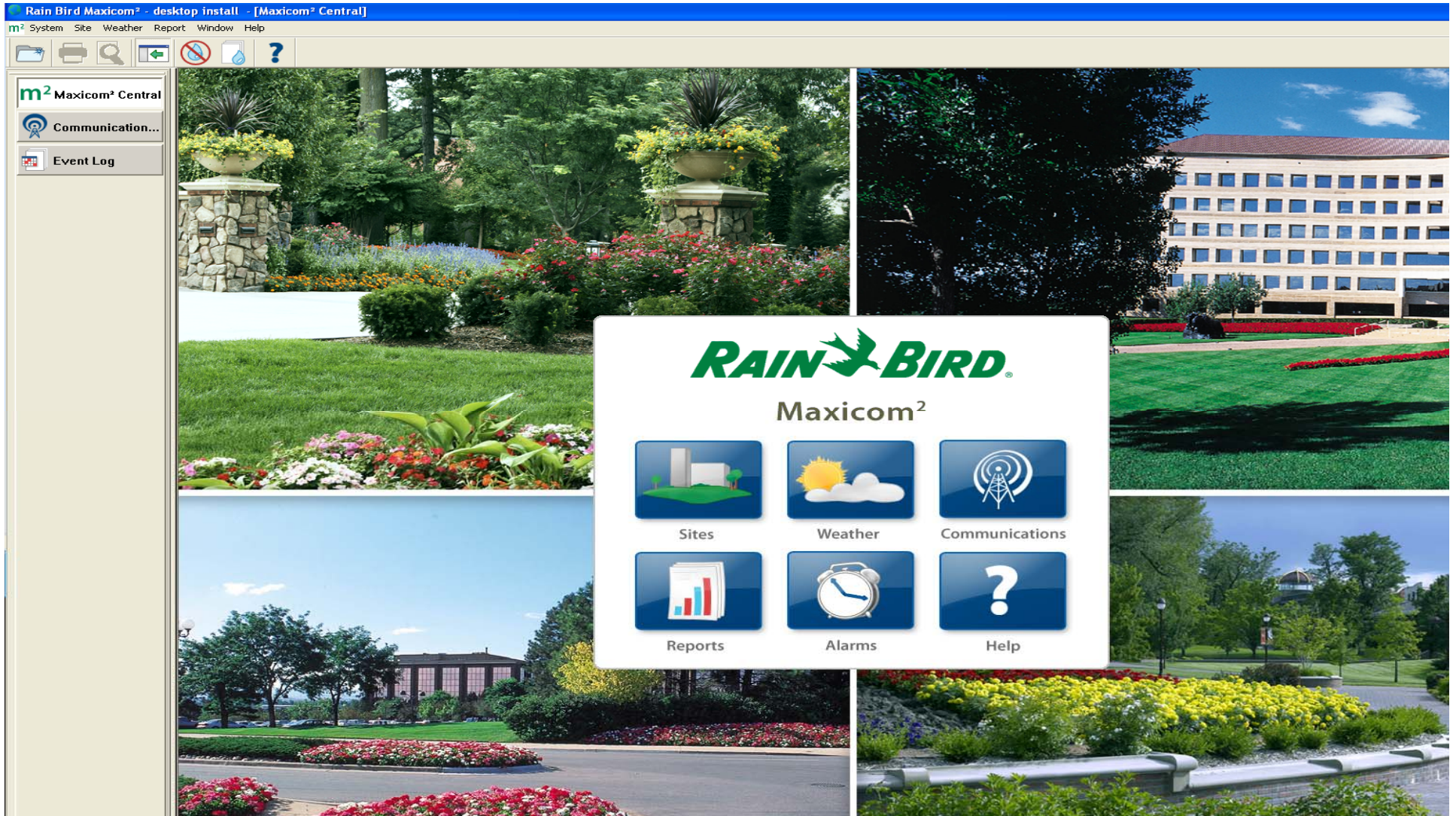
# **Maxicom<sup>2</sup> Version 4.1**

- **Expected release date April 2010**

# Old User Interface



# New User Interface



\_\_\_\_\_



# Most Icons Have Been Updated

Rain Bird Maxicom<sup>2</sup> - desktop install - [Event Log]

System Site Weather Report Window Help

m<sup>2</sup> Maxicom<sup>2</sup> Central

Communication...

Event Log

test site

RAIN BIRD

Type	Date	Description	From
Event	3/2/2010 10:49:25 PM	Maxicom <sup>2</sup> Control Engine launched.	Local Machine
Event	3/2/2010 9:58:48 PM	Maxicom <sup>2</sup> Control Engine launched.	Local Machine
Alarm	3/2/2010 6:19:50 PM	Site Automatic Send Contact failed. (COM1)	test site
Warning	3/2/2010 6:19:49 PM	Signon failure. (COM1)	test site
Warning	3/2/2010 6:17:49 PM	Signon failure. (COM1)	test site
Warning	3/2/2010 6:15:45 PM	Signon failure. (COM1)	test site
Warning	3/2/2010 6:13:45 PM	Signon failure. (COM1)	test site
Warning	3/2/2010 6:11:45 PM	Signon failure. (COM1)	test site
Warning	3/2/2010 6:09:45 PM	Signon failure. (COM1)	test site
Warning	3/2/2010 6:07:46 PM	Signon failure. (COM1)	test site
Warning	3/2/2010 6:05:45 PM	Signon failure. (COM1)	test site
Warning	3/2/2010 6:03:46 PM	Signon failure. (COM1)	test site
Warning	3/2/2010 6:01:46 PM	Signon failure. (COM1)	test site
Event	3/2/2010 1:48:18 PM	Maxicom <sup>2</sup> Control Engine launched.	Local Machine
Event	3/2/2010 1:42:23 PM	Maxicom <sup>2</sup> Control Engine launched.	Local Machine
Event	3/2/2010 1:35:04 PM	Maxicom <sup>2</sup> Control Engine launched.	Local Machine
Event	3/2/2010 1:28:17 PM	Maxicom <sup>2</sup> Control Engine launched.	Local Machine
Event	3/2/2010 7:08:39 AM	Maxicom <sup>2</sup> Control Engine launched.	Local Machine
Event	3/2/2010 6:57:47 AM	Site manual contact was successful. (COM1)	test site

# Selectable Color Palette

CCU Setup For Site: CCU28 Two-Wire

What to Display:

- ☒ Flow Rate
- ☐ Cycle Time
- ☐ Soak Time
- ☐ Landscape Coefficient
- ☐ Precipitation Rate
- ☐ FLO WATCH Zone
- ☐ FLO-MANAGER Zone
- ☐ Decoder/Sensor Setting

Clipboard Operations:

Copy Special Cut Special Clear Special Paste

Save OK Cancel Print Help

**RAIN BIRD**

CHANNEL	Channel 01	Channel 02	Channel 03	Channel 04	Channel 05	Channel 06	Channel 07	Channel 08	Channel 09	Channel 10	Channel 11	Channel 12	Channel 13	Channel 14	Channel 15	Channel 16	Channel 17	Channel 18	Channel 19	Char
DEVICE	ESP-40	N/A	ESP-24	ESP-24	1" Flow Sensor	4" Flow Sensor	ESP - 32	N/A	ESP-12	ESP-16	ESP-40	N/A	1" Flow Meter	3" Flow Meter	Site Rain Can	ESP 12 Lights	Lights	Anemomete	RSD	4C
Sensor (A)		N/A						N/A				N/A								
Sensor B		N/A						N/A				N/A								
Station 01	35.00	N/A	35.00	35.00			35.00	N/A	35.00	35.00	35.00	N/A				0.00				35
Station 02	20.00	N/A	35.00	35.00			35.00	N/A	35.00	35.00	35.00	N/A				0.00				35
Station 03	35.00	N/A	35.00	35.00				N/A				N/A				0.00				35
Station 04	35.00	N/A	35.00	35.00				N/A				N/A				0.00				35
Station 05	35.00	N/A	35.00	35.00				N/A				N/A				0.00				35
Station 06	35.00	N/A	35.00	35.00				N/A				N/A				0.00				0
Station 07	35.00	N/A	35.00	35.00				N/A				N/A				0.00				0
Station 08	35.00	N/A	50.00	50.00				N/A				N/A				0.00				0
Station 09	35.00	N/A	50.00	50.00				N/A				N/A				0.00				0
Station 10	35.00	N/A	50.00	50.00				N/A				N/A				0.00				0
Station 11	50.00	N/A	50.00	50.00				N/A				N/A				0.00				0
Station 12	50.00	N/A	50.00	50.00				N/A				N/A				0.00				0
Station 13	50.00	N/A	50.00	50.00				N/A				N/A				0.00				0
Station 14	50.00	N/A	50.00	50.00				N/A				N/A				0.00				0
Station 15	50.00	N/A	20.00	20.00				N/A				N/A				0.00				0
Station 16	50.00	N/A	20.00	20.00				N/A				N/A				0.00				0
Station 17	50.00	N/A	20.00	20.00				N/A				N/A				0.00				0
Station 18	50.00	N/A	20.00	20.00				N/A				N/A				0.00				0
Station 19	50.00	N/A	20.00	20.00				N/A				N/A				0.00				0
Station 20	50.00	N/A	20.00	20.00				N/A				N/A				0.00				0
Station 21	50.00	N/A	50.00	50.00				N/A				N/A				0.00				0
Station 22	50.00	N/A	50.00	50.00				N/A				N/A				0.00				0
Station 23	50.00	N/A	50.00	50.00				N/A				N/A				0.00				0
Station 24	0.00	N/A	0.00	50.00				N/A				N/A				0.00				0
Station 25	50.00	N/A						N/A				N/A				0.00				0
Station 26	50.00	N/A						N/A				N/A				0.00				0
Station 27	50.00	N/A						N/A				N/A				0.00				0
Station 28	50.00	N/A						N/A				N/A				0.00				0
Station 29	50.00	N/A						N/A				N/A				0.00				0
Station 30	50.00	N/A						N/A				N/A				0.00				0

Value Macro

Landscape Coefficient 100 % Default

Cycle Time (Minute) 20 20Min

Soak Time (Minute) 10 10 Min

Precipitation Rate (in/h) 1.85 15' Sprays

Flow Rate (gpm) 35 1-1/2" Valve

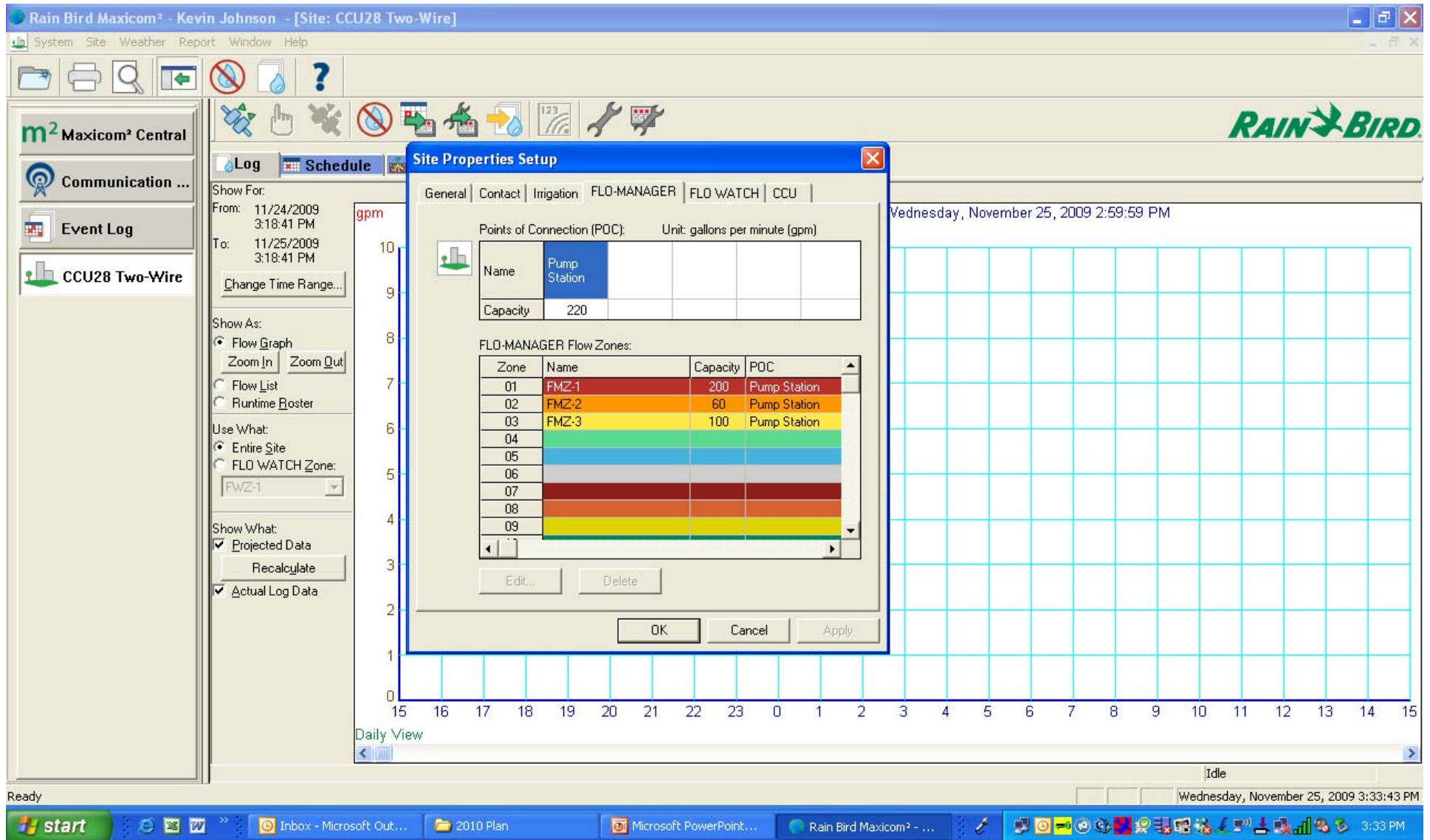
FLO-MANAGER Zone 1. FMZ-1 ( 200.0 gpm )

FLO WATCH Zone 1. FwZ-1

OK Cancel

Friday, November 13, 2009 4:27:20 PM

# Flo Zone Color Grid



# Flo Zone Color Grid

CCU Setup For Site: CCU28 Two-Wire

What to Display:

- ☐ Flow Rate
- ☐ Cycle Time
- ☐ Soak Time
- ☐ Landscape Coefficient
- ☐ Precipitation Rate
- ☐ FLO WATCH Zone
- ☒ FLO-MANAGER Zone
- ☐ Decoder/Sensor Setting

Clipboard Operations:

Copy Special Cut Special Clear Special Paste

Save OK Cancel Print Help

RAIN BIRD

CHANNEL	Channel 01	Channel 02	Channel 03	Channel 04	Channel 05	Channel 06	Channel 07	Channel 08	Channel 09	Channel 10	Channel 11	Channel 12	Channel 13	Channel 14	Channel 15	Channel 16	Channel 17	Channel 18	Channel 19	Char
DEVICE	ESP-40	N/A	ESP-24	ESP-24	1" Flow Sensor	4" Flow Sensor	ESP - 32	N/A	ESP-12	ESP-16	ESP-40	N/A	1" Flow Meter	3" Flow Meter	Site Rain Can	ESP 12 Lights	Lights	Anemometer	RSD	4C
Sensor (A)		N/A						N/A				N/A								
Sensor B		N/A						N/A				N/A								
Station 01	FMZ-1	N/A	FMZ-1	FMZ-1			FMZ-2	N/A	FMZ-2	FMZ-2	FMZ-2	N/A								FM
Station 02	FMZ-1	N/A	FMZ-1	FMZ-1			FMZ-2	N/A	FMZ-2	FMZ-2	FMZ-2	N/A								FM
Station 03	FMZ-1	N/A	FMZ-1	FMZ-1			FMZ-2	N/A	FMZ-2	FMZ-2	FMZ-2	N/A								FM
Station 04	FMZ-1	N/A	FMZ-1	FMZ-1			FMZ-2	N/A	FMZ-2	FMZ-2	FMZ-2	N/A								FM
Station 05	FMZ-1	N/A	FMZ-1	FMZ-1			FMZ-2	N/A	FMZ-2	FMZ-2	FMZ-2	N/A								FM
Station 06	FMZ-1	N/A	FMZ-1	FMZ-1			FMZ-2	N/A	FMZ-2	FMZ-2	FMZ-2	N/A								
Station 07	FMZ-1	N/A	FMZ-1	FMZ-1			FMZ-2	N/A	FMZ-2	FMZ-2	FMZ-2	N/A								
Station 08	FMZ-1	N/A	FMZ-1	FMZ-1			FMZ-2	N/A	FMZ-2	FMZ-2	FMZ-2	N/A								
Station 09	FMZ-1	N/A	FMZ-1	FMZ-1			FMZ-2	N/A	FMZ-2	FMZ-2	FMZ-2	N/A								
Station 10	FMZ-1	N/A	FMZ-1	FMZ-1			FMZ-2	N/A	FMZ-2	FMZ-2	FMZ-2	N/A								
Station 11	FMZ-1	N/A	FMZ-1	FMZ-1			FMZ-2	N/A	FMZ-2	FMZ-2	FMZ-2	N/A								
Station 12	FMZ-1	N/A	FMZ-1	FMZ-1			FMZ-2	N/A	FMZ-2	FMZ-2	FMZ-2	N/A								
Station 13	FMZ-1	N/A	FMZ-1	FMZ-1			FMZ-2	N/A	FMZ-2	FMZ-2	FMZ-2	N/A								
Station 14	FMZ-1	N/A	FMZ-1	FMZ-1			FMZ-2	N/A		FMZ-2	FMZ-2	N/A								
Station 15	FMZ-1	N/A	FMZ-1	FMZ-1			FMZ-2	N/A		FMZ-2	FMZ-2	N/A								
Station 16	FMZ-1	N/A	FMZ-1	FMZ-1			FMZ-2	N/A		FMZ-2	FMZ-2	N/A								
Station 17	FMZ-1	N/A	FMZ-1	FMZ-1			FMZ-2	N/A		FMZ-2	FMZ-2	N/A								
Station 18	FMZ-1	N/A	FMZ-1	FMZ-1			FMZ-2	N/A		FMZ-2	FMZ-2	N/A								
Station 19	FMZ-1	N/A	FMZ-1	FMZ-1			FMZ-2	N/A		FMZ-2	FMZ-2	N/A								
Station 20	FMZ-1	N/A	FMZ-1	FMZ-1			FMZ-2	N/A		FMZ-2	FMZ-2	N/A								
Station 21	FMZ-1	N/A	FMZ-1	FMZ-1			FMZ-2	N/A		FMZ-2	FMZ-2	N/A								
Station 22	FMZ-1	N/A	FMZ-1	FMZ-1			FMZ-2	N/A		FMZ-2	FMZ-2	N/A								
Station 23	FMZ-1	N/A	FMZ-1	FMZ-1			FMZ-2	N/A		FMZ-2	FMZ-2	N/A								
Station 24	FMZ-1	N/A	FMZ-1	FMZ-1			FMZ-2	N/A		FMZ-2	FMZ-2	N/A								
Station 25	FMZ-1	N/A					FMZ-2	N/A		FMZ-2	FMZ-2	N/A								
Station 26	FMZ-1	N/A					FMZ-2	N/A		FMZ-2	FMZ-2	N/A								
Station 27	FMZ-1	N/A					FMZ-2	N/A		FMZ-2	FMZ-2	N/A								
Station 28	FMZ-1	N/A					FMZ-2	N/A		FMZ-2	FMZ-2	N/A								
Station 29	FMZ-1	N/A					FMZ-2	N/A		FMZ-2	FMZ-2	N/A								
Station 30	FMZ-1	N/A					FMZ-2	N/A		FMZ-2	FMZ-2	N/A								

Friday, November 13, 2009 4:28:25 PM

# Station Properties Memo Displayed

CCU Setup For Site: CCU28 Two-Wire

What to Display:

- ☒ Flow Rate
- ☐ Cycle Time
- ☐ Soak Time
- ☐ Landscape Coefficient
- ☐ Precipitation Rate
- ☐ FLO WATCH Zone
- ☐ FLO-MANAGER Zone
- ☐ Decoder/Sensor Setting

Clipboard Operations:

Copy Special Cut Special Clear Special Paste

Save OK Cancel Print Help

**RAIN BIRD**

CHANNEL	Channel 01	Channel 02	Channel 03	Channel 04	Channel 05	Channel 06	Channel 07	Channel 08	Channel 09	Channel 10	Channel 11	Channel 12	Channel 13	Channel 14	Channel 15	Channel 16	Channel 17	Channel 18	Channel 19	Char
DEVICE	ESP-40	N/A	ESP-24	ESP-24	1" Flow	4" Flow	ESP-32	N/A	ESP-12	ESP-16	ESP-40	N/A	1" Flow Meter	3" Flow Meter	Site Rain Can	ESP 12 Lights	Lights	Anemometer	ET Manager	4C
Sensor (A)																				
Sensor B																				
Station 01	35.00										35.00	N/A				0.00				35
Station 02	20.00										35.00	N/A				0.00				35
Station 03	35.00										35.00	N/A				0.00				35
Station 04	35.00										35.00	N/A				0.00				35
Station 05	35.00										35.00	N/A				0.00				35
Station 06	35.00										35.00	N/A				0.00				0
Station 07	35.00										35.00	N/A				0.00				0
Station 08	35.00										35.00	N/A				0.00				0
Station 09	35.00										35.00	N/A				0.00				0
Station 10	35.00										35.00	N/A				0.00				0
Station 11	50.00										50.00	N/A				0.00				0
Station 12	50.00										50.00	N/A				0.00				0
Station 13	50.00										50.00	N/A								0
Station 14	50.00										50.00	N/A								0
Station 15	50.00										50.00	N/A								0
Station 16	50.00										50.00	N/A								0
Station 17	50.00										50.00	N/A								0
Station 18	50.00										50.00	N/A								0
Station 19	50.00										50.00	N/A								0
Station 20	50.00										50.00	N/A								0
Station 21	50.00										50.00	N/A								0
Station 22	50.00										50.00	N/A								0
Station 23	50.00										20.00	N/A								0
Station 24	0.00										20.00	N/A								0
Station 25	50.00	N/A					50.00	N/A			20.00	N/A								0
Station 26	50.00	N/A					50.00	N/A			20.00	N/A								0
Station 27	50.00	N/A					50.00	N/A			20.00	N/A								0
Station 28	50.00	N/A					50.00	N/A			20.00	N/A								0
Station 29	50.00	N/A					50.00	N/A			50.00	N/A								0
Station 30	50.00	N/A					50.00	N/A			50.00	N/A								0
Station 31	50.00	N/A					50.00	N/A			50.00	N/A								0
Station 32	35.00	N/A					35.00	N/A			50.00	N/A								0

**Set Channel 1 Station 1 Properties**

Memo for this Station: ( Ctrl-Enter to Return )

Turf - West Side - 1804 w 15 nozzles

Color

Attribute Value Macro

Landscape Coefficient 100 % Default

Cycle Time (Minute) 20 20Min

Soak Time (Minute) 20 20 Min

Precipitation Rate (in/h) 0.6 8005

Flow Rate (gpm) 35 1-1/2" Valve

FLO-MANAGER Zone 1. FMZ-1 ( 200.0 gpm )

FLO WATCH Zone 1. FwZ-1

OK Cancel

Thursday, January 07, 2010 3:14:21 PM

# Station Properties Memo Displayed

CCU Setup For Site: CCU28 Two-Wire

What to Display:

- ☒ Flow Rate
- ☐ Cycle Time
- ☐ Soak Time
- ☐ Landscape Coefficient
- ☐ Precipitation Rate
- ☐ FLO WATCH Zone
- ☐ FLO-MANAGER Zone
- ☐ Decoder/Sensor Setting

Clipboard Operations:

Copy Special   Cut Special   Clear Special   Paste

Save   OK   Cancel   Print   Help

**RAIN BIRD**

CHANNEL	Channel 01	Channel 02	Channel 03	Channel 04	Channel 05	Channel 06	Channel 07	Channel 08	Channel 09	Channel 10	Channel 11	Channel 12	Channel 13	Channel 14	Channel 15	Channel 16	Channel 17	Channel 18	Channel 19	Char
DEVICE	ESP-40	N/A	ESP-24	ESP-24	1" Flow Sensor	4" Flow Sensor	ESP - 32	N/A	ESP-12	ESP-16	ESP-40	N/A	1" Flow Meter	3" Flow Meter	Site Rain Can	ESP 12 Lights	Lights	Anemomete	RSD	4C
Sensor (A)		N/A						N/A				N/A								
Sensor B		N/A						N/A				N/A								
Station 01	35.00	N/A	35.00	35.00			35.00	N/A	35.00	35.00	35.00	N/A				0.00				35
Station 02	20.00	N/A	35.00	35.00			35.00	N/A	35.00	35.00	35.00	N/A				0.00				35
Station 03	35.00	N/A	35.00	35.00			35.00	N/A	35.00	35.00	35.00	N/A				0.00				35
Station 04	35.00	N/A	35.00	35.00			35.00	N/A	35.00	35.00	35.00	N/A				0.00				35
Station 05	35.00	N/A	35.00	35.00			35.00	N/A	35.00	35.00	35.00	N/A				0.00				35
Station 06	35.00	N/A	35.00	35.00			35.00	N/A	35.00	35.00	35.00	N/A				0.00				0
Station 07	35.00	N/A	35.00	35.00			35.00	N/A	35.00	35.00	35.00	N/A				0.00				0
Station 08	35.00	N/A	50.00	50.00			35.00	N/A	35.00	35.00	35.00	N/A				0.00				0
Station 09	35.00	N/A	50.00	50.00			35.00	N/A	35.00	35.00	35.00	N/A				0.00				0
Station 10	35.00	N/A	50.00	50.00			35.00	N/A	35.00	35.00	35.00	N/A				0.00				0
Station 11	50.00	N/A	50.00	50.00			50.00	N/A	50.00	50.00	50.00	N/A				0.00				0
Station 12	50.00	N/A	50.00	50.00			50.00	N/A	50.00	50.00	50.00	N/A				0.00				0
Station 13	50.00	N/A	50.00	50.00			50.00	N/A		50.00	50.00	N/A								0
Station 14	50.00	N/A	50.00	50.00			50.00	N/A		50.00	50.00	N/A								0
Station 15	50.00	N/A	20.00	20.00			50.00	N/A		50.00	50.00	N/A								0
Station 16	50.00	N/A	20.00	20.00			50.00	N/A		50.00	50.00	N/A								0
Station 17	50.00	N/A	20.00	20.00			50.00	N/A			50.00	N/A								0
Station 18	50.00	N/A	20.00	20.00			50.00	N/A			50.00	N/A								0
Station 19	50.00	N/A	20.00	20.00			50.00	N/A			50.00	N/A								0
Station 20	50.00	N/A	20.00	20.00			50.00	N/A			50.00	N/A								0
Station 21	50.00	N/A	50.00	50.00			50.00	N/A			50.00	N/A								0
Station 22	50.00	N/A	50.00	50.00			50.00	N/A			50.00	N/A								0
Station 23	50.00	N/A	50.00	50.00			50.00	N/A			20.00	N/A								0
Station 24	0.00	N/A	0.00	50.00			0.00	N/A			20.00	N/A								0
Station 25	50.00	N/A					50.00	N/A			20.00	N/A								0
Station 26	50.00	N/A					50.00	N/A			20.00	N/A								0
Station 27	50.00	N/A					50.00	N/A			20.00	N/A								0
Station 28	50.00	N/A					50.00	N/A			20.00	N/A								0
Station 29	50.00	N/A					50.00	N/A			50.00	N/A								0
Station 30	50.00	N/A					50.00	N/A			50.00	N/A								0

Turf - West Side - 1804 w 15 nozzles

Wednesday, November 25, 2009 3:39:46 PM

# Asterisk Shows Note Has Been Entered

Rain Bird Maxicom<sup>2</sup> - Kevin Johnson - [Site: CCU28 Two-Wire]

System Site Weather Report Window Help

m<sup>2</sup> Maxicom<sup>2</sup> Central

Communication ...

Event Log

Site Sat

CCU28 Two-Wire

Log Schedule ET Data Event Map

November, 2009

SUN	MON	TUE	WED	THU	FRI	SAT
1	2	3	4	5	6	7
8	9	10	11	12	13	14
15	16	17	18	19	20	21
22	23	24	25	26*	27	28
29	30					

Note for 11/27/2009

☐ Auto Pop Up

Syringe to wash in fertilizer

Ready

Friday, November 13, 2009 4:30:35 PM

start

Calendar - Microsoft ...

Rain Bird Maxicom<sup>2</sup> - ...

Presentations

Microsoft PowerPoint ...

4:30 PM

# Copy Note Copy Paste Addition

Rain Bird Maxicom² - Kevin Johnson - [Site: CCU28 Two-Wire]

System Site Weather Report Window Help

m² Maxicom² Central  
Communication ...  
Event Log  
Site Sat  
CCU28 Two-Wire

Log Schedule ET Data Event Map

November, 2009

SUN	MON	TUE	WED	THU	FRI	SAT
1	2	3	4	5	6	7
8	9	10	11	12	13	14
15	16	17	18	19	20	21
22	23	24	25	26*	27*	28
29	30					

Note for 11/27/2009  
☐ Auto Pop Up  
Syringe to wash in fertilizer

Set "No Auto Send" Day(s)  
Clear "No Auto Send" Day(s)  
Clear This Month  
Clear All  
Copy Note Ctrl+C  
Paste Note Ctrl+V

Ready Friday, November 13, 2009 4:42:05 PM

start Calendar - Microsoft ... Rain Bird Maxicom² - ... Presentations Microsoft PowerPoint ... 4:42 PM

# Note Displayed When Hovered Over

Rain Bird Maxicom<sup>2</sup> - Kevin Johnson - [Site: CCU28 Two-Wire]

System Site Weather Report Window Help

m<sup>2</sup> Maxicom<sup>2</sup> Central

Communication ...

Event Log

CCU28 Two-Wire

Log Schedule ET Data Event Map

RAIN BIRD

November, 2009

SUN	MON	TUE	WED	THU	FRI	SAT
1	2	3	4	5	6	7
8	9	10	11	12	13	14
15	16	17	18	19	20	21
22	23	24	25	26*	27*	28
29	30					

Note for 11/25/2009

Auto Pop Up

Syringe to wash in fertilizer

Ready

Wednesday, November 25, 2009 3:15:57 PM

start

Inbox - Microsoft Out...

2010 Plan

Microsoft PowerPoint...

Rain Bird Maxicom<sup>2</sup> - ...

3:15 PM

# No Auto Send vs No Watering

Rain Bird Maxicom<sup>2</sup> - Kevin Johnson - [Site: CCU28 Two-Wire]

System Site Weather Report Window Help

m<sup>2</sup> Maxicom<sup>2</sup> Central

Communication ...


Event Log

CCU28 Two-Wire

Log Schedule ET Data Event Map

RAIN BIRD

November, 2009

SUN	MON	TUE	WED	THU	FRI	SAT
1	2	3	4	5	6	7
8	9	10	11	12	13	14
15	16	17	18	19	20	21
22	23	24  No Auto Send	25	26*	27*	28
29	30					

Note for 11/24/2009

☐ Auto Pop Up

Idle

Selection Pane

start

Inbox - Microsoft Out...

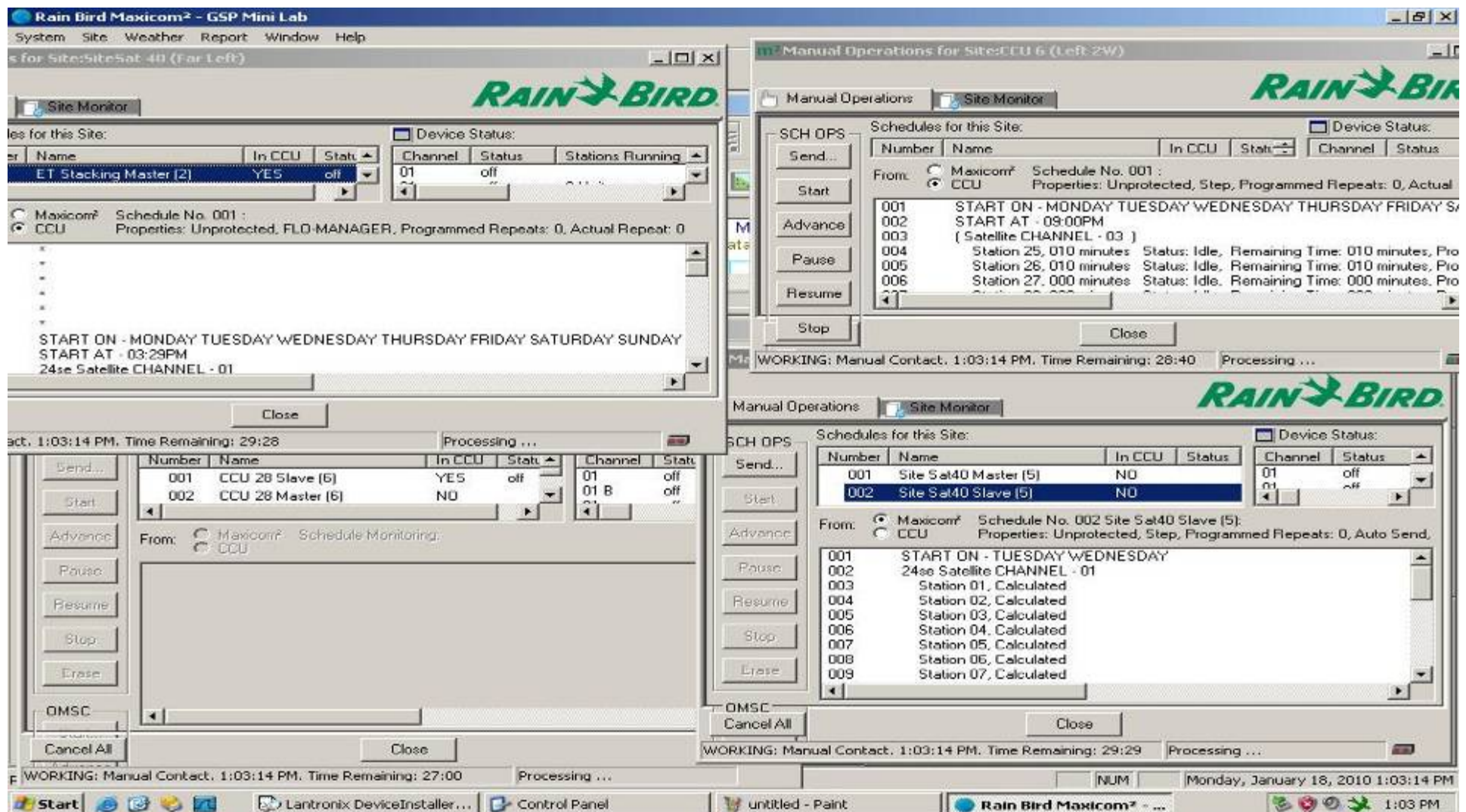
2010 Plan

Microsoft PowerPoint...

Rain Bird Maxicom<sup>2</sup> - ...

3:27 PM

# Capable of 4 Site Manual Contacts Simultaneously



# OSMC Dialog Box Location Remembered

m<sup>2</sup> Manual Operations for Site:Site Sat

Manual Operations Site Monitor

**SCH OPS**

Send... Start Advance Pause Resume Stop Erase

**Schedules for this Site:**

Number	Name	In CCU	Stat
800	Rain Watch	YES	ON
801	Rain Count	YES	off
802	Rain Inhibit	YES	off
902	Log Flow Only	YES	off
102	Every Other Day - ET	YES	off
101	Daily - Water Budget	NO	
900	Log-Seef-NC Master Valve	NO	
200	Master	NO	
201	Slave 1-6	NO	
202	Slave 7-9	NO	
901	Flow Watch Schedule	NO	

**Device Status:**

Channel	Status	Stations Running	Type	Name
01	off		ESP-12-SITE (M4se) [2 Sensors]	ESP SITE 12
01 A	off	0.0 gpm	Flow Meter	Flow Meter
01 B	off	0.00 in	Rain Gauge	Rain Gauge

**OSMC**

Start... Advance Stop

From: Maxicom<sup>2</sup> CCU Schedule Monitoring:

**Start Stations for Channel 1: ESP-12-SITE (M4se) ...**

Stations:

Station	Runtime
01	
02	
03	
04	
05	
06	
07	
08	
09	

Run Time: 5 Minutes

Apply

Send Command

OMSC Commands Issued:

- 1 Run Channel 01, Station 03 for 05 minutes.
- 2 Run Channel 01, Station 03 for 05 minutes.

Close

Cancel All Close

WORKING: Manual Contact, 4:08:10 PM. Time Remaining: 29:52 Processing ...

start Calendar - Microsoft ... Rain Bird Maxicom<sup>2</sup> - ... Presentations Microsoft PowerPoint ... 4:08 PM

# OSMC Default Time Now 5 Minutes

m<sup>2</sup> Manual Operations for Site:Site Sat

Manual Operations Site Monitor

**SCH OPS**

Send... Start Advance Pause Resume Stop Erase

**Schedules for this Site:**

Number	Name	In CCU	Stat
800	Rain Watch	YES	ON
801	Rain Count	YES	off
802	Rain Inhibit	YES	off
902	Log Flow Only	YES	off
102	Every Other Day - ET	YES	off
101	Daily - Water Budget	NO	
900	Log-Seef-NC Master Valve	NO	
200	Master	NO	
201	Slave 1-6	NO	
202	Slave 7-9	NO	
901	Flow Watch Schedule	NO	

**Device Status:**

Channel	Status	Stations Running	Type	Name
01	off		ESP-12-SITE (M4se) [2 Sensors]	ESP SITE 12
01 A	off	0.0 gpm	Flow Meter	Flow Meter
01 B	off	0.00 in	Rain Gauge	Rain Gauge

**OSMC**

Start... Advance Stop

From: Maxicom<sup>2</sup> Schedule Monitoring: CCU

**Start Stations for Channel 1: ESP-12-SITE (M4se) ...**

Stations:

Station	Runtime
01	
02	
03	
04	
05	
06	
07	
08	
09	

Run Time: 5 Minutes

Apply

Send Command

OMSC Commands Issued:

- 1 Run Channel 01, Station 03 for 05 minutes.
- 2 Run Channel 01, Station 03 for 05 minutes.

Close

Cancel All Close

WORKING: Manual Contact, 4:08:10 PM. Time Remaining: 29:52 Processing ...

start Calendar - Microsoft ... Rain Bird Maxicom<sup>2</sup> - ... Presentations Microsoft PowerPoint ... 4:08 PM

# Print Button Added to Flow / Run Time Log Screen

Flow Data and Station Runtime Logs for Site 001 - test

Show For:  
From: 11/12/2009 4:39:53 PM  
To: 11/13/2009 4:39:53 PM  
Actual Time Range: 11/12/2009 4:39:53 PM - 11/13/2009 4:39:53 PM

Change Time Range...

Site:  
Site 001 - test

Show As:  
☒ Runtime Roster  
☐ Flow List  
☐ Flow Graph Zoom In Zoom Out

Use What:  
☒ Entire Site  
☐ FLO WATCH Zone:

Show What:  
☐ Projected Recalculate  
☒ Actual Log Data

RAIN BIRD

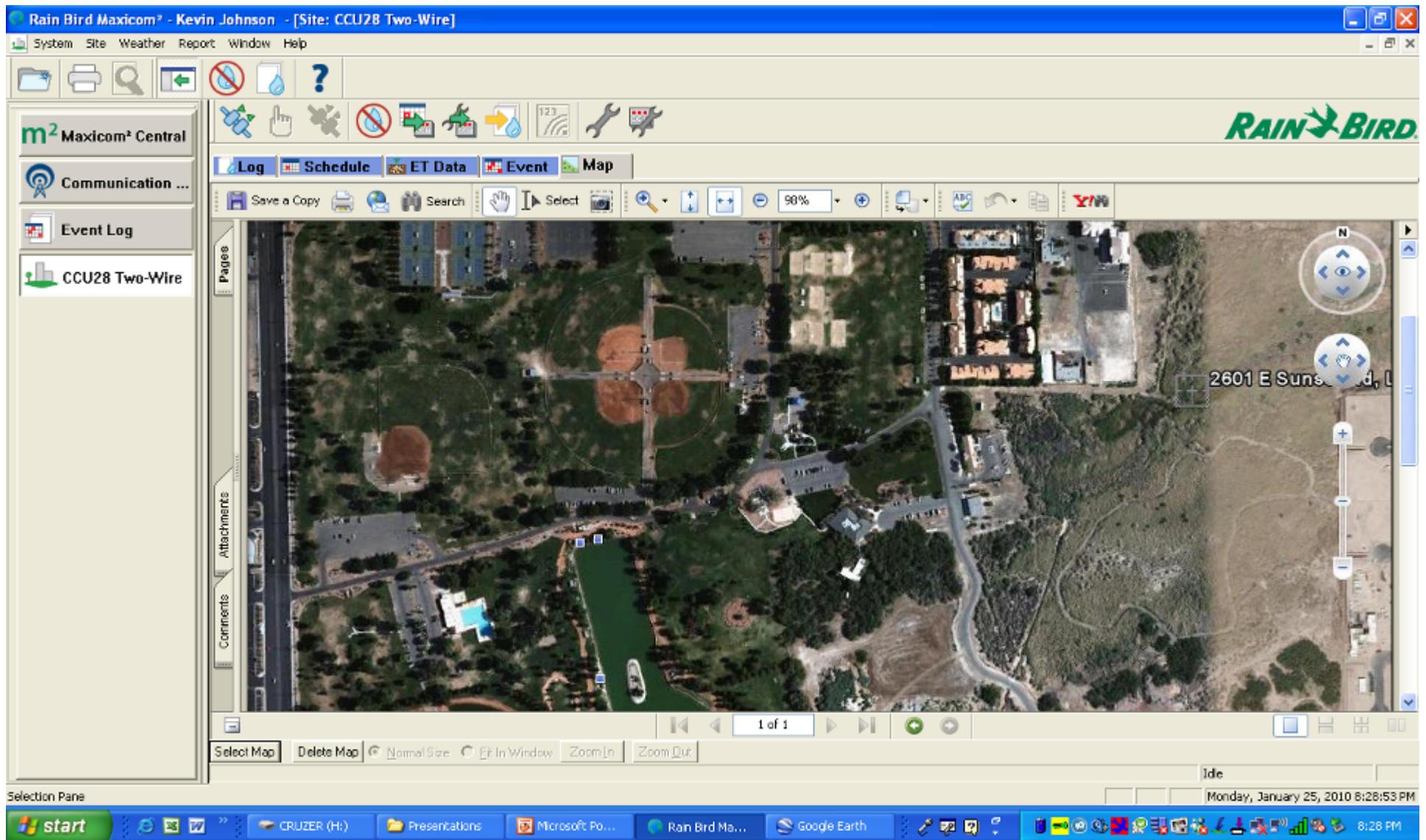
CHANNEL	Channel 01	Channel 02	Channel 03	Channel 04	Channel 05	Channel 06	Channel 07	Channel 08	Channel 09	Channel 10	Channel 11	Channel 12	Channel 13	Channel 14	Channel 15	Channel 16
DEVICE																
Sensor (A)																
Sensor B																
Station 01																
Station 02																
Station 03																
Station 04																
Station 05																
Station 06																
Station 07																
Station 08																
Station 09																
Station 10																
Station 11																
Station 12																
Station 13																
Station 14																
Station 15																
Station 16																
Station 17																
Station 18																
Station 19																
Station 20																
Station 21																
Station 22																
Station 23																
Station 24																
Station 25																
Station 26																
Station 27																
Station 28																
Station 29																
Station 30																
Station 31																
Station 32																
Station 33																

New

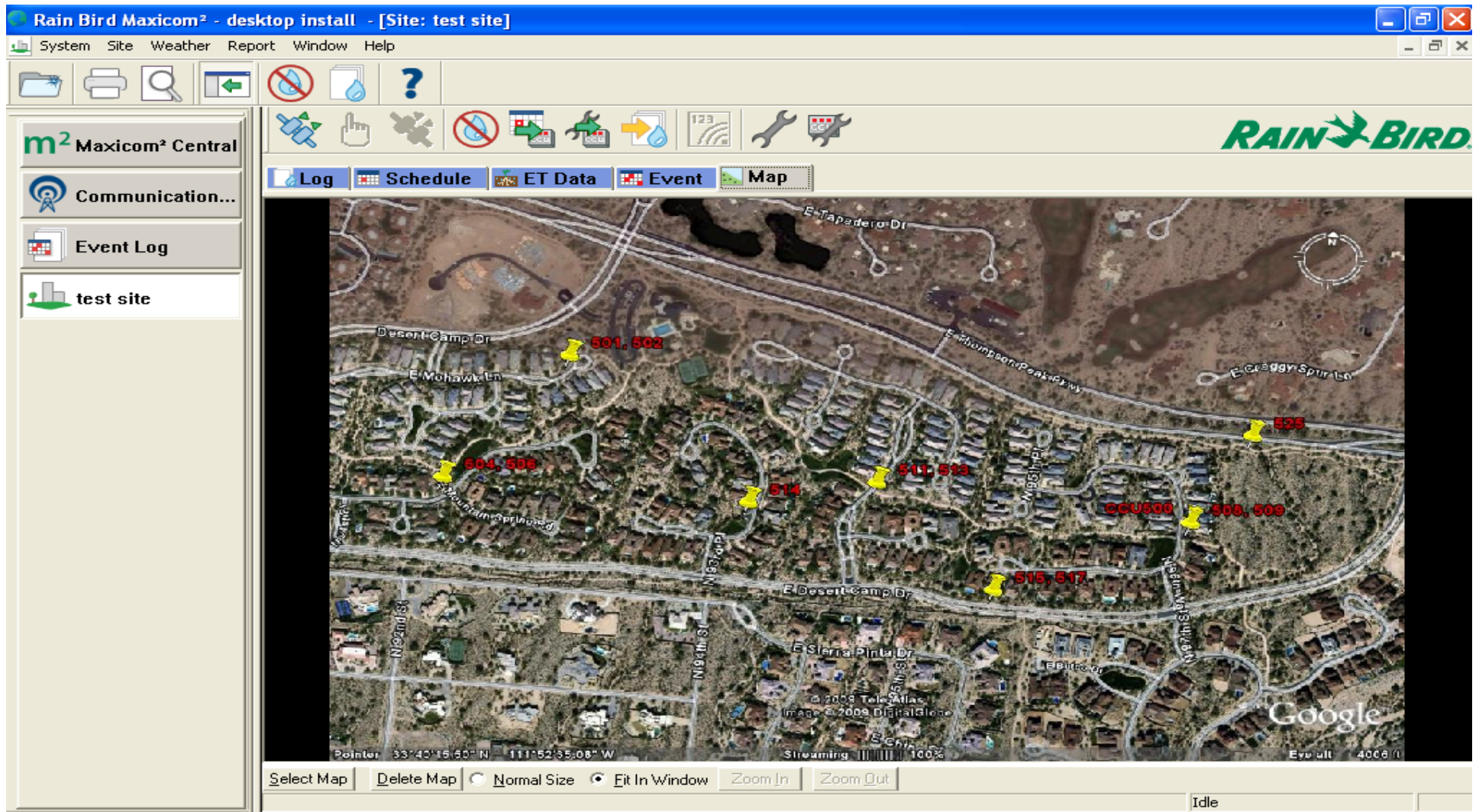
Print Close

Friday, November 13, 2009 4:40:05 PM

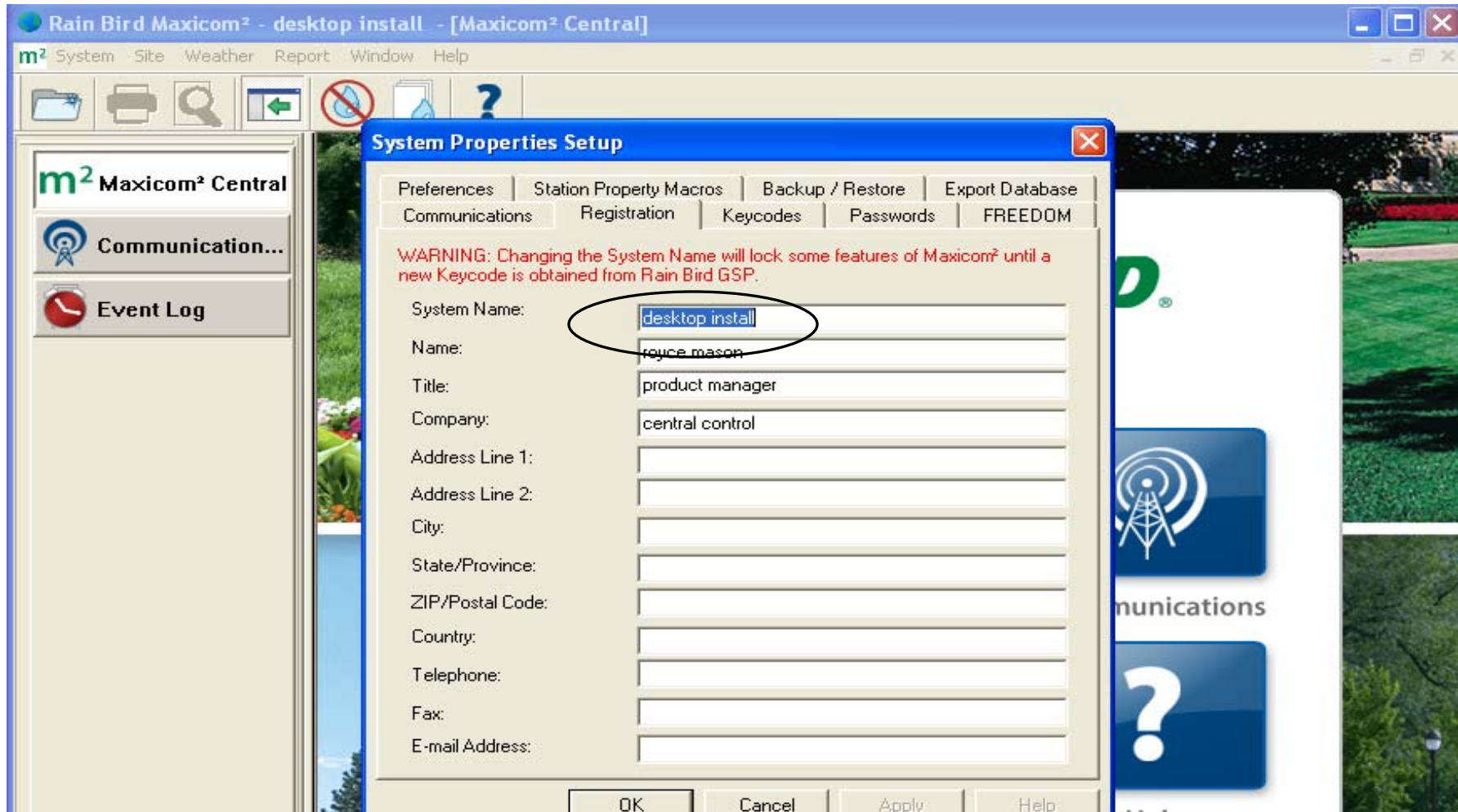
# Map Viewer Accepts .JPG & .PDF Files



# Map Viewer Accepts .JPG & .PDF Files



# Requires Key Code



## Other Items

- **Manual Operation schedule list now defaults to show the schedules that are in the CCU / SITE at the top of the list.**

## **Other Items**

- **No Charge To GSP Subscribers**
- **\$695.00 For Non GSP Subscribers**
- **Expected Release of Windows 7 support is Summer 2010.**
- **This will be installed on all new Maxicom Central Computers**
  - New purchases
  - GSP Platinum Plus

# Other Items

- **Minimum System Requirements**
  - 1.8 GHz
  - 512 MB RAM
  - 200 MB space
  - Best when viewed in 1600 x 1200 (or greater) resolution (widescreen - 16 x 9)

# Other Items

- **Best practices**

- Backup database to file NOT on present computer
  - External hard drive
  - Removable media
  - Other computer
- Have previous software version available (rare)

# PT3002 Pulse Transmitter

- Replaces PT1502
- Compatible with existing
  - NEMACAB Enclosure
  - PTPWRSUPP Power Supply
- Enhancements
  - Larger display
  - Improved navigation
  - Includes programmable relay (can be used in place of Data Industrial 330 Pulse Relay for IQ and standalone controller high-flow shutoff)
- Expected Release Q1 2010

## Central Controls

**PT3002 Pulse Transmitter**  
For Maxicom<sup>2</sup>®, SiteControl,  
MDC2 or IQ™





## Questions?

Royce Mason

[rmason@rainbird.com](mailto:rmason@rainbird.com)

520 806 5668

---

The Intelligent Use of Water.™

LEADERSHIP • EDUCATION • PARTNERSHIPS • PRODUCTS