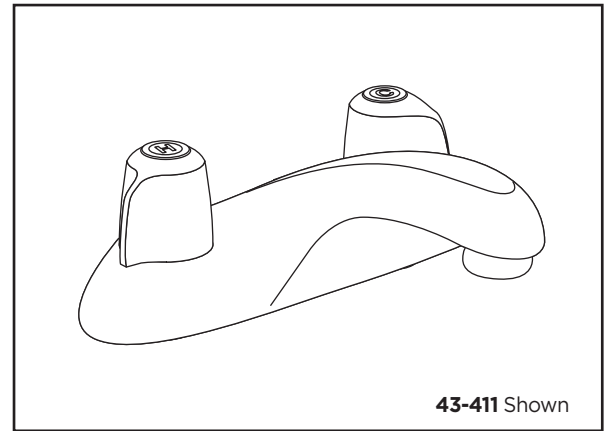




Two handle Lavatory Faucet

**Features:**

- Cast brass, heavy chrome plated body
- Metal handles with acrylic hot and cold index buttons
- Compression stems with renewable brass seats
- Working parts can be easily replaced
- 4" centers for mounting
- 2.2 gpm (8.3 L/min) @ 60 psi maximum aerator
- ADA compliant handles operate with less than 5 lbs. force

**Technical Specifications:**

- ASME A112.18.1M
- CABO/ANSI A117.1 (ADA)
- CSA B125
- ANSI/NSF 61-1997b

Catalog Numbers:

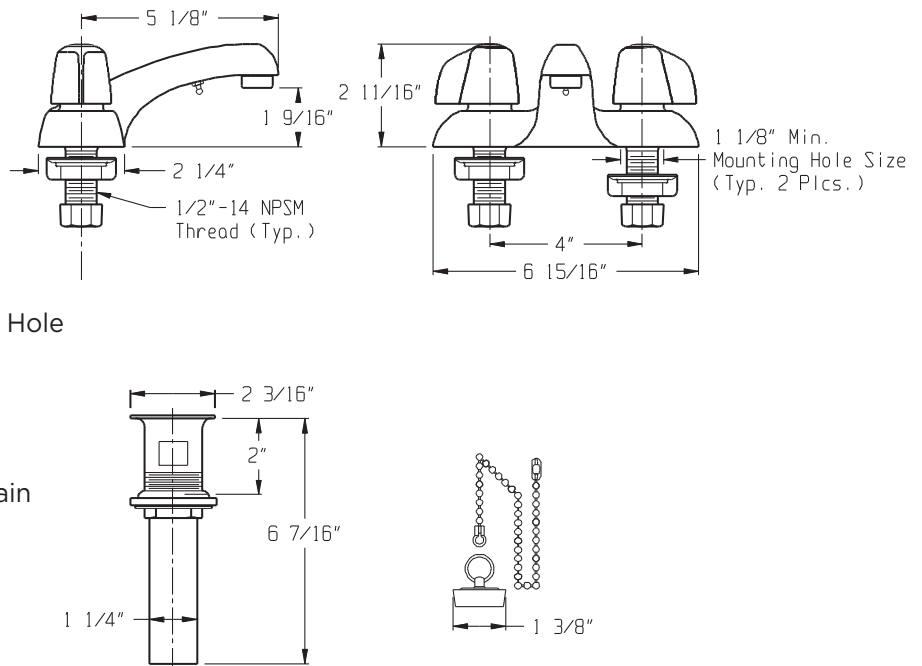
- 43-411** With Chain Stay
07-43-411 With Chain Stay
43-413 Less Pop-up and Pop-up Hole
43-411-65 Less Drain, With Button
07-43-411-65 Less Drain, With Button
43-411-65-66 Less Drain, With Button
43-411-66 With Chain Stay, Less Drain

Prefixes Available:

For Less Handles, Ceramic Cartridges,
See 53-100 Series
07- Metal Fluted Handles

Suffixes Available:

- 65 With Button
-66 Wrist Blade Handle



Job Name	
Date	
Model Specified	
Quantity	
Customer	
Contractor	
Architect/engineer	