



# **ValleyView<sup>®</sup> Industries** 2017 Catalog

Setting the Landscape Industry Standard

Wholesale Landscape Supply / Irrigation Supply / Architects



**Made in the U.S.A.**





**Valley View<sup>®</sup>**  
**Industries**

Setting the Landscape Industry Standard

# Welcome

Landscape Contractors have proven for five decades what brand of landscape edgings is the clear choice for their customers and that choice is Valley View.

Wholesale and Irrigation Supply Centers continue to stock the brand that is not only the most cost competitive; but the highest quality in the marketplace. Valley View Industries diverse offering of edging and paver restraints satisfies the industry needs of architects; who specify a particular type of edging based on soil and geographic composition.

The demand for Valley View Industries products is met by a year round manufacturing facility that over the years has had to expand manufacturing and distribution space to meet the needs of the marketplace.

We thank those Architects, Contractors and Irrigation/Wholesale Supply Centers that continue to provide the market with the industry's premier name and quality.

## ***The Employees of Valley View Industries***



Due to Customer Demand  
We've Brought Back Two  
Flat Strip Edges!

Black Generic  
Diamond - 20'  
See Page 4

Dandy Diamond - 20'  
See Page 6



**For Over 45 YEARS** **Valley View Industries**  
Setting the Landscape Industry Standard

### Diamond Paver Edge

Highest Quality Restraint in the Industry



Justly rewards its flexibility by being a proven

**Perfect for Pathways**  
A Great Alternative to Steel Edging!



Foot design allows for Valley View metal anchor stake or nails



### Diamond-Lok Paver Edging

Easy Installation/ Permanent Edge Restraint



Diamond-Lok Flexible "L" Shape- 15'



Diamond-Lok Flexible "T" Shape- 15'



Diamond-Lok Flexible "L" Shape- 1" LOW PROFILE- 15'

Contact Us for a Complimentary Banner and Cut Samples of Edging

**For Over 45 YEARS** **Valley View Industries**  
Setting the Landscape Industry Standard

## Poly Board Landscape Edging

### The Steel Edging Alternative

20 Foot Lengths



1" x 4"



1" x 6"



2" x 4"

Metal or Poly Anchor Stakes



Recycling symbol and USA flag

**For Over 45 YEARS** **Valley View Industries**  
Setting the Landscape Industry Standard

## The Landscape Edging Preferred by Contractors



20' lengths

Additional Anchor Stakes Recommended for Long Lasting Use





Recycling symbol and USA flag



## 4 Flat Strip Edging

### The Landscape Industry's Highest Quality Lawn Edging

The "Original" patented lawn edging from 1968, Black Diamond set the industry standard for quality. It has a plastic composition that is unmatched in the industry!

Today many landscapers who are aware of lower priced alternatives remain loyal to the consistency of Black Diamond's performance.

Think of the labor costs of replacing inferior edging after your bedding stone/mulch has been installed!



#### **Black Diamond- 20'**

**Height:** 5.5"

**Packaged:** 1-20' strip, 4-9" Metal Stakes and 1-8" "C" Connector

**Shipped:** 5 Strips per Bundle

**Order Quantity:** 50 Strips = 10 Bundles

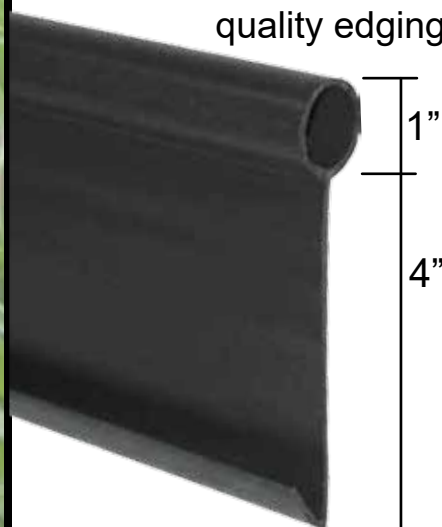
**Product Code:** BD-20



**Includes: 4-Metal Stakes and 1-8" "C" Connector**

**Additional Metal Stakes (Page 11) and 8" "C" Connectors (Page 13)**

Ace of Diamond is the right choice for the contractor who demands a quality edging.



**Includes: 4-Metal Stakes and 1-8" "C" Connector**

**Additional Metal Stakes (Page 11) and 8" "C" Connectors (Page 13)**

#### **Ace of Diamond- 20'**

**Height:** 5"

**Packaged:** 1-20' Strip, 4-9" Metal Stakes and 1-8" "C" Connector

**Shipped:** 5 Strips per Bundle

**Order Quantity:** 50 Strips = 10 Bundles

**Product Code:** AD-20

#### **Black Generic Diamond- 20'**

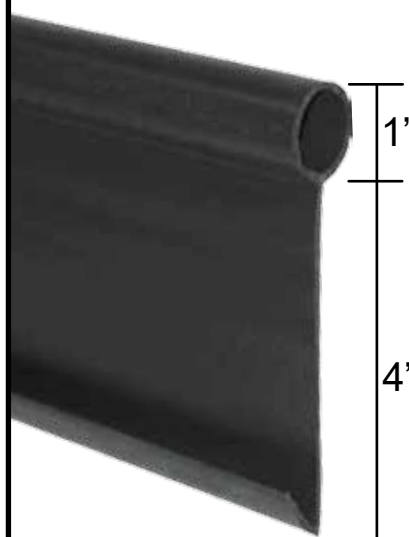
**Height:** 5"

**Packaged:** 1-20' Strip and 1-8" "C" Connector

**Shipped:** 5 Strips per Bundle

**Order Quantity:** 100 Strips = 20 Bundles

**Product Code:** BGD-20



**Includes: 1-8" "C" Connector**

**Metal Stakes (Page 11) and additional 8" "C" Connectors (Page 13)**

## Ace of Diamond Light Brown- 20'

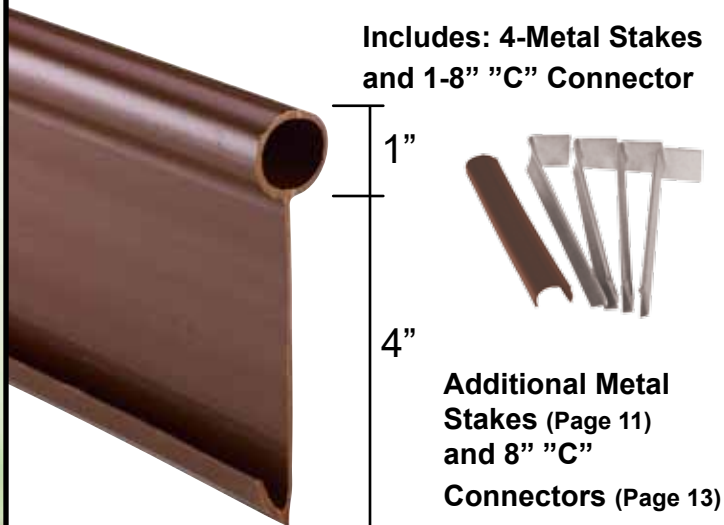
**Height:** 5"

**Packaged:** 1-20' Strip, 4-9" Metal Stakes and 1-8" "C" Connector

**Shipped:** 5 Strips per Bundle

**Order Quantity:** 50 Strips = 10 Bundles

**Product Code:** AD-20LB



Ace of Diamond is the right choice for the contractor who demands a quality edging.

## Mighty Diamond Classic- 20'

**Height:** 5"

**Packaged:** 1-20' Strip, 4-9" Metal Stakes and 1-8" "C" Connector

**Shipped:** 5 Strips per Bundle

**Order Quantity:** 50 Strips = 10 Bundles

**Product Code:** MDC-20

**Includes:**

**4-Metal Stakes and 1-8" "C" Connector**



Mighty Diamond Classic was designed to offer a quality choice at an economical price.

## Easy Diamond Ground- 20'

**Height:** 1.25"

**Packaged:** 1-20' Strip, 6-9" Poly Stakes and 1-8" "C" Connector

**Shipped:** 5 Strips per Bundle

**Order Quantity:** 50 Strips = 10 Bundles

**Product Code:** EDGF-20



**Includes:** 6-9" poly stakes and 1-8" "C" connector

Easy Diamond is "The No Dig Edging" and can easily be installed without any digging or trenching.

## Diamondback- 20'

**Height:** 5.25"

**Packaged:** 1-20' Strip and 1-8" "C" Connector

**Shipped:** 5 Strips per Bundle

**Order Quantity:** 100 Strips = 20 Bundles

**Product Code:** DBE-20

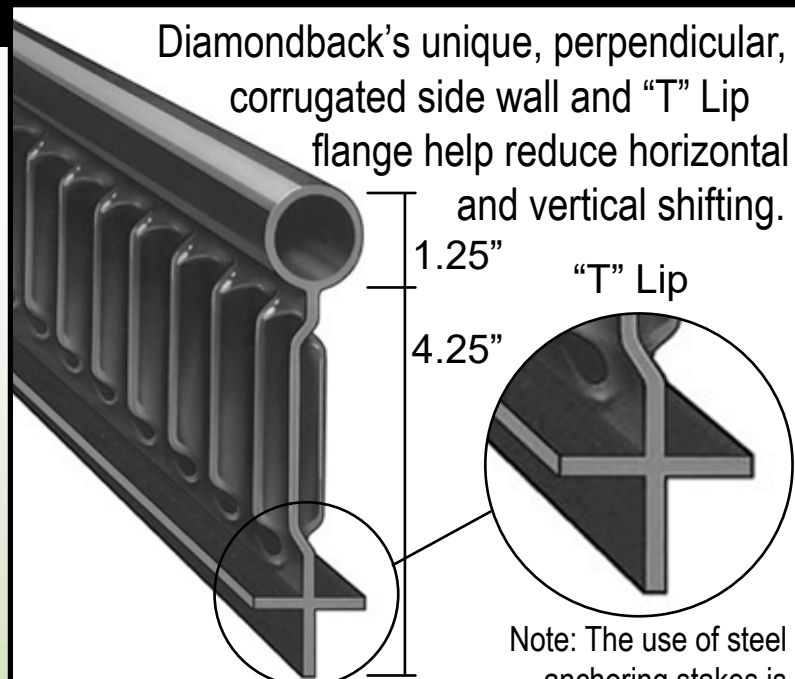
Diamondback's unique, perpendicular, corrugated side wall and "V" Lip flange help reduce horizontal and vertical shifting.



**Note:** The use of steel anchoring stakes is recommended.



## 6 Flat Strip Edging / Installation Tips



### Diamondback ROYAL- 20'

**Height:** 5.5"  
**Packaged:** 1-20' Strips and 1-8" "C" Connector  
**Shipped:** 5 Strips per Bundle  
**Order Quantity:** 100 Strips = 20 Bundles  
**Product Code:** DBR-20

Note: The use of steel anchoring stakes is recommended.

### Dandy Diamond- 20'

**Height:** 5"  
**Packaged:** 1-20' Strip, 4-9" Metal Stakes and 1-8" "C" Connector  
**Shipped:** 5 Strips per Bundle  
**Order Quantity:** 50 Strips = 10 Bundles  
**Product Code:** DD-20



Includes: 4-Metal Stakes and 1-8" "C" Connector



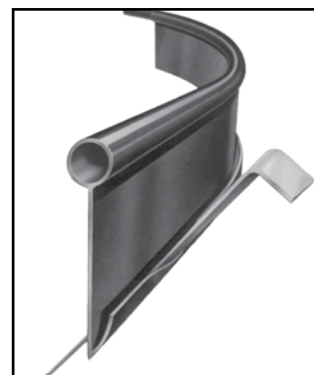
Additional Metal Stakes (Page 11) and 8" "C" Connectors (Page 13)

## General Installation Tips



Always wear protective gloves and eye wear before striking anchor stake.

Note: The correct way to use anchor stakes is to hammer in at a 45 degree angle.



Below is the correct way to connect two strips of lawn edging together. This installation procedure will help reduce section separation as plastic tends to expand and contract over time.



Cut 5" off one of the sections.



Join two of the sections together using a connector.



Drive an anchor stake through both sections of edging.





## Rubber Edging

The rubber edging market segment has exploded with consumer acceptance of rubber as an alternative to traditional poly edgings. Many retailers are getting three times the retail price per foot for rubber compared to poly.

Valley View has adapted to these consumer desires by introducing EarthEdge Rubber Edging and Rolls. Our EarthEdge Rubber Edging is made from recycled tires and provides a long lasting and durable finished look for landscape designs. Use EarthEdge next to driveways, sidewalks, planting beds, or around trees. Available in three stylish colors - Black, Cedar Red and Dark Brown.



**Use Along Driveways**



**Edge Planting Beds**



**Use Around Trees**



**Use Along Sidewalks**



# 8 Rubber Edging / Rubber Rolls

## EARTHEDGE™

### Pallet Options



#### Earth Edge Rubber Edging Black Display

**Height:** 2.9"  
**Packaged:** 168-12" Pieces and  
30 - 8 per bag of 9" Poly Nails  
**Shipped:** Quarter pallet display  
(for additional Poly Nails order item PN-R8-BBK)  
**Product Code:** EE1FT-BK-168D



#### Earth Edge Rubber Edging Cedar Red Display

**Height:** 2.9"  
**Packaged:** 168-12" Pieces and  
30 - 8 per bag of 9" Poly Nails  
**Shipped:** Quarter pallet display  
(for additional Poly Nails order item PN-R8-BCR)  
**Product Code:** EE1FT-CR-168D



#### Earth Edge Rubber Edging Dark Brown Display

**Height:** 2.9"  
**Packaged:** 168-12" Pieces and  
30 - 8 per bag of 9" Poly Nails  
**Shipped:** Quarter pallet display  
(for additional Poly Nails order item PN-R8-BDB)  
**Product Code:** EE1FT-DB-168D



**30 bags of 8-9" Poly Nails  
per Pallet Display  
Additional Poly Nails  
available on page 12**

**Each part includes:  
Individual UPC**



#### Earth Edge Rubber Edging Dark Brown/Cedar Red Display

**Height:** 2.9"  
**Packaged:** 336-12" Dark Brown Pieces and 60 Bags of 8-9" Dark Brown Poly Nails per Display  
336-12" Cedar Red Pieces and 60 Bags of 8-9" Cedar Red Poly Nails per Display  
**Shipped:** 4-Displays per Pallet, 672-12" Pieces, 120 Bags of 8-9" Poly Nails  
(for additional Poly Nails order item PN-R8-BDB and PN-R8-BCR)  
**Product Code:** EE1FT-DB/CR-672D





## EARTHEDGE<sup>TM</sup> Rubber Rolls

EarthEdge Rubber Rolls are made from recycled tires and provide a long lasting and durable finished look for landscape designs. Use EarthEdge under fences, around planting beds, or along sidewalks.

Available in three stylish colors - Black, Cedar Red and Dark Brown.

**Each Roll includes:  
4-9" Poly Nails**



**Additional Poly Nails  
available on page 12**

### Earth Edge Rubber Edging Roll Black

**Width:** 5"  
**Packaged:** 1-8' Roll and  
4-9" Poly Nails per Roll  
**Shipped:** 4 Rolls per Carton,  
40 Cartons  
(160 Rolls) per Pallet  
**Order Quantity:** 4 Rolls = 1 Carton  
**Product Code:** EER-8BK

### Earth Edge Rubber Edging Roll Cedar Red

**Width:** 5"  
**Packaged:** 1-8' Roll and  
4-9" Poly Nails per Roll  
**Shipped:** 4 Rolls per Carton,  
40 Cartons  
(160 Rolls) per Pallet  
**Order Quantity:** 4 Rolls = 1 Carton  
**Product Code:** EER-8CR

### Earth Edge Rubber Edging Roll Dark Brown

**Width:** 5"  
**Packaged:** 1-8' Roll and  
4-9" Poly Nails per Roll  
**Shipped:** 4 Rolls per Carton,  
40 Cartons  
(160 Rolls) per Pallet  
**Order Quantity:** 4 Rolls = 1 Carton  
**Product Code:** EER-8DB





# 10 Bulk Components

## Landscape Nail - 10" (Box)

Length: 10"  
Packaged: 150-10" Metal Nails  
Shipped: 150 per Box  
Order Quantity: 150 Nails = 1 Box  
Product Code: LN-10

## Landscape Nail - 10" (Pallet)

Length: 10"  
Packaged: 150-10" Metal Nails per Box  
Shipped: 32 Boxes per Pallet  
Order Quantity: 32 Boxes = 1 Pallet  
Product Code: LN-10-32

## Landscape Nail - 12" (Box)

Length: 12"  
Packaged: 125-12" Metal Nails  
Shipped: 125 per Box  
Order Quantity: 125 Nails = 1 Box  
Product Code: LN-12

## Landscape Nail - 12" (Pallet)

Length: 12"  
Packaged: 125-12" Metal Nails per Box  
Shipped: 32 Boxes per Pallet  
Order Quantity: 32 Boxes = 1 Pallet  
Product Code: LN-12-32

Save \$  
by Ordering  
Pallet  
Quantities!







**Always wear protective gloves and eye wear before striking anchor stake**

### **Metal Anchoring Stakes**

**Length:** 9"  
**Packaged:** 200-9" Loose Metal Stakes  
**Shipped:** 200 Loose Metal Stakes per Box  
**Order Quantity:** 200 Stakes = 1 Box  
**Product Code:** BAS

### **Diamond-Lok Stakes - Bulk**

**Length:** 9"  
**Packaged:** 8-9" Metal Stakes  
 Taped Together per Kit  
**Shipped:** 25 Kits per Box  
**Order Quantity:** 25 Kits = 1 Box  
**Product Code:** DLS-8B



### **Metal Stake Kits**

**Length:** 9"  
**Packaged:** 4-9" Metal Stakes and  
 1-8" "C" Connector  
 Taped Together per Kit  
**Shipped:** 50 Kits per Box  
**Order Quantity:** 50 Kits = 1 Box  
**Product Code:** SK-B





# 12 Bulk Components



## Poly Nail - 9" Black (Case)

Length: 9"  
Packaged: 8-9" Poly Nails per Bag  
Shipped: 10 Bags per Box  
Order Quantity: 10 Bags = 1 Box  
Product Code: **PN-R8- BBK**



## Poly Nail - 9" Cedar Red (Case)

Length: 9"  
Packaged: 8-9" Poly Nails per Bag  
Shipped: 10 Bags per Box  
Order Quantity: 10 Bags = 1 Box  
Product Code: **PN-R8- BCR**



## Poly Nail - 9" Dark Brown (Case)

Length: 9"  
Packaged: 8-9" Poly Nails per Bag  
Shipped: 10 Bags per Box  
Order Quantity: 10 Bags = 1 Box  
Product Code: **PN-R8- BDB**

## Poly Stake Kit

**Length:** 9"  
**Packaged:** 6-9" Poly Stakes and  
1-8" "C" Connector per Kit  
**Shipped:** 50 Kits per Box  
**Order Quantity:** 50 Kits = 1 Box  
**Product Code:** PSK-B6



## Poly Anchoring Stakes

**Length:** 9"  
**Packaged:** 6-9" Poly Stakes per Bag  
**Shipped:** 50 Bags per Box  
**Order Quantity:** 50 Bags = 1 Box  
**Product Code:** PS-B6



## 90° Corner Connector

**Packaged:** 1-90° Corner Connector and  
2-"C" Connectors per Bag  
**Shipped:** 50 Bags per Box  
**Order Quantity:** 50 Bags = 1 Box  
**Product Code:** 90-B

## Angular Connectors Variety Pack

**Packaged:** 14-90°, 12-60°, 12-120° and  
12-TEE Connectors (Loose)  
per Box  
**Shipped:** 50 Connectors per Box  
**Order Quantity:** 50 Connectors = 1 Box  
**Product Code:** VPK-B



## 8" Ribbed Edging Connectors

**Packaged:** 100 "Full Circle"  
Connectors (Loose)  
**Shipped:** 100 Connectors per Box  
**Order Quantity:** 100 Connectors = 1 Box  
**Product Code:** EC-B



## 8" Ribbed Edging "C" Connectors

**Packaged:** 100 "C" Connectors (Loose)  
**Shipped:** 100 Connectors per Box  
**Order Quantity:** 100 Connectors = 1 Box  
**Product Code:** EC-C-B





# 14 Diamond Paver Edge

## Diamond Paver Edging- 8'

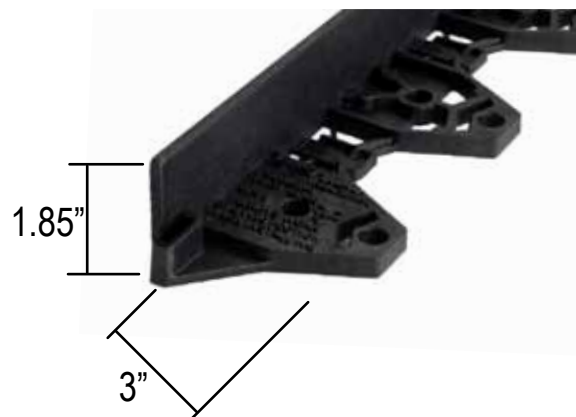
**Height:** 1.85"  
**Packaged:** 10-8' Strips per Bundle  
**Shipped:** 10-8' Strips per Bundle  
**Order Quantity:** 10 Strips = 1 Bundle  
**Product Code:** DPE-8

## Diamond Paver Edging- 8'

**Height:** 1.85"  
**Packaged:** 10-8' Strips per Bundle  
**Shipped:** 63 Bundles (630 Strips) per Pallet  
**Order Quantities:** 630 Strips = 1 Pallet  
**Product Code:** DPE-8-630

## Features:

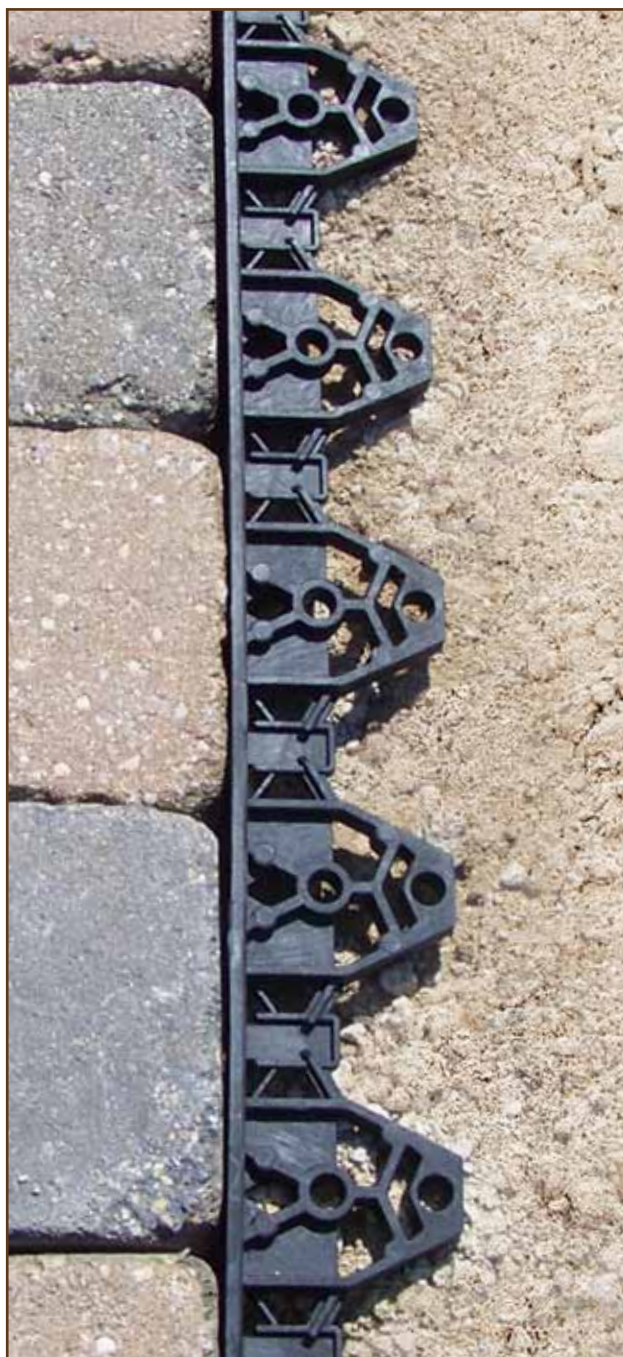
- No round bead to see
- Minimal trenching for installation
- Strong enough for string trimmers / deck mowers



Foot design allows for Valley View metal anchor stake or nails.



Diamond Paver Edge easily converts to flexible by using a pruner.



Note: Five metal anchor stakes/nails are recommended per 8' length and are sold separately.



## Highest Quality Restraint in the Industry

Our Diamond Paver Edge is the most economically priced paver restraint in the industry for an 8 ft. length product.



**Save \$ by purchasing in pallet quantity.  
Each pallet consists of 63 bundles of 10.**



Before Mulch Installation



Almost Invisible After Mulch Installation



**A Great Alternative  
to Steel Edging!**



**Perfect for  
Pathways**



# 16 Diamond-Lok Paver Edging

Diamond-Lok Paver Edging is designed to provide an easy installation and create a permanent edge restraint under the most demanding traffic conditions. Available in 15' and 6' lengths, flexible and rigid configurations, in "T" and "L" shape designs, the Diamond-Lok line can fit any application you need to fill.



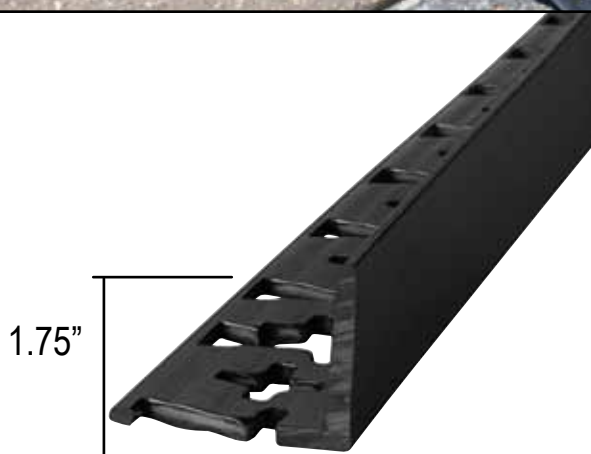
## Diamond-Lok Flexible "L" Shape- 15'

**Height:** 1.75"  
**Packaged:** 1-15' Strip and 8-9"  
Metal Stakes  
**Shipped:** 10 Strips per Bundle  
**Order Quantity:** 50 Strips = 5 Bundles  
**Product Code:** DLLF-15



## Diamond-Lok Flexible "T" Shape- 15'

**Height:** 1.75"  
**Packaged:** 1-15' Strip and 8-9"  
Metal Stakes  
**Shipped:** 5 Strips per Bundle  
**Order Quantity:** 25 Strips = 5 Bundles  
**Product Code:** DLF-15



## Diamond-Lok "L" Shape- 6'

**Height:** 1.75"  
**Packaged:** 50-6' Strips  
**Shipped:** 50 Strips per Box  
**Order Quantity:** 50 Strips = 1 Box  
**Product Code:** DLLF6-50

(Stakes are sold separately, see page 11)



## Diamond-Lok Flexible "L" Shape - 1" LOW PROFILE- 15'

**Height:** 1"  
**Packaged:** 1-15' Strip and 8-9"  
Metal Stakes  
**Shipped:** 10 Strips per Bundle  
**Order Quantity:** 50 Strips = 5 Bundles  
**Product Code:** DLLF1-15





Install the pavers.



Slide the bottom section of Diamond-Lok up to the sidewall until the edging sidewall is flush with the pavers.



Diamond-Lok can easily be converted to form curved designs!



Anchor stakes need to be hammered in at a 45° angle with the head of the stake pointing up. (Always wear protective gloves and eye wear before striking anchor stake.)



Install the stakes at each end and approximately every 2 feet by pounding them through the holes provided at a 45° angle facing the pavers.



Backfill with soil and sod flush against the edging sidewall.



# 18 Poly Board Landscape Edging

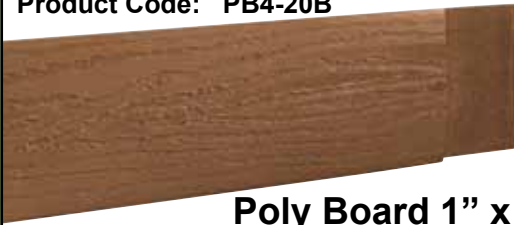
## Poly Board 2" x 4" Light Brown

**Height:** 3"  
**Packaged:** 1-20' x 1.5" x 3" Strip, 18.5 lbs.  
**Shipped:** 5 Strips per Bundle  
**Order Quantity:** 50 Strips = 50 Strips  
**Product Code:** PB2x4-20LB



## Poly Board 1" x 4" Brown

**Height:** 3.5"  
**Packaged:** 1-20' x .5" x 3.5" Strip, 9 lbs.  
**Shipped:** 5 Strips per Bundle  
**Order Quantity:** 50 Strips = 10 Bundles  
or 200 Strips = 1 Lift  
**Product Code:** PB4-20B



**Shown in  
Light Brown**

## Poly Board 1" x 4" Light Brown

**Height:** 3.5"  
**Packaged:** 1-20' x .5" x 3.5" Strip, 9 lbs.  
**Shipped:** 5 Strips per Bundle  
**Order Quantity:** 50 Strips = 10 Bundles  
or 200 Strips = 1 Lift  
**Product Code:** PB4-20LB

## Poly Board 1" x 6" Brown

**Height:** 5.5"  
**Packaged:** 1-20' x .625" x 5.5" Strip, 13 lbs.  
**Shipped:** 5 Strips per Bundle  
**Order Quantity:** 50 Strips = 10 Bundles or 100 Strips = 1 Lift  
**Product Code:** PB6-20B



**Shown in  
Brown**

## Poly Board 1" x 6" Light Brown

**Height:** 5.5"  
**Packaged:** 1-20' x .625" x 5.5" Strip, 13 lbs.  
**Shipped:** 5 Strips per Bundle  
**Order Quantity:** 50 Strips = 10 Bundles or 100 Strips = 1 Lift  
**Product Code:** PB6-20LB

Poly Board Landscape Edging is  
the Steel Edging Alternative!  
Compare Our Quality  
Against the Competition.

## Features:

- Flexible
- Easy to Work With
- Safer than Steel
- Safe for Children and Animals
- UV Protection Added
- No Trim Cap Needed
- Will Not Rust
- Anchor Stakes Sold Separately (Page 19)



Note: Due to Poly Board's thermal expansion and contraction, we recommend leaving a 1.25" gap at the slip joint for all 20' Poly Board installations.



## Poly Board 1" x 4" and 1" x 6" Metal Stakes Brown

**Length:** 13"  
**Packaged:** 50-13" Metal Stakes Loose  
**Shipped:** 50 per Box  
**Order Quantity:** 50 Stakes = 1 Box  
**Product Code:** SKPB4-50



## Heavy Duty Poly Board Universal Metal Stakes Brown

**Length:** 10"  
**Packaged:** 50-10" Metal Stakes Loose  
**Shipped:** 50 per Box  
**Order Quantity:** 50 Stakes = 1 Box  
**Product Code:** SKPB4-50PC



## Poly Board 2" x 4" Metal Stakes Brown

**Length:** 10"  
**Packaged:** 50-10" Metal Stakes Loose  
**Shipped:** 50 per Box  
**Order Quantity:** 50 Stakes = 1 Box  
**Product Code:** SKPB2X4-50

Both for use with extremely hard soils

## Poly Board 1" x 4" Poly Stakes Brown

**Length:** 12"  
**Packaged:** 50-12" Strip Poly Stakes Loose  
**Shipped:** 50 per Box  
**Order Quantity:** 50 Stakes = 1 Box  
**Product Code:** PBAS4-BB



## Poly Board 1" x 4" Poly Stakes Light Brown

**Length:** 12"  
**Packaged:** 50-12" Strip Poly Stakes Loose  
**Shipped:** 50 per Box  
**Order Quantity:** 50 Stakes = 1 Box  
**Product Code:** PBAS4-BLB



## Poly Board 1" x 6" Poly Stakes Brown

**Length:** 18"  
**Packaged:** 50-18" Strip Poly Stakes Loose  
**Shipped:** 50 per Box  
**Order Quantity:** 50 Stakes = 1 Box  
**Product Code:** PBAS6-BB



## Poly Board 1" x 6" Poly Stakes Light Brown

**Length:** 18"  
**Packaged:** 50-18" Strip Poly Stakes Loose  
**Shipped:** 50 per Box  
**Order Quantity:** 50 Stakes = 1 Box  
**Product Code:** PBAS6-BLB





## Distribution Worldwide



**Valley View<sup>®</sup>**  
**Industries**

Setting the Landscape Industry Standard

Valley View Industries  
13834 S. Kostner Ave  
Crestwood, IL 60445  
[www.valleyviewind.com](http://www.valleyviewind.com)

Toll Free: (800) 323-9369  
Toll Free Fax: (800) 323-3262  
International: (708) 597-0885  
International Fax: (708) 597-9959

Your Local Distributor: