

SSCX SERIES CENTRIFUGAL PUMPS
FEATURING STAINLESS STEEL HOUSING & NORYL IMPELLERS.



High-head performance and quiet operation join corrosion-resistant dependability with Berkeley SSCX Series centrifugal pumps. In addition, the SSCX Series features:

Stainless Steel Housing and Shaft – Maximum corrosion resistance in chemical as well as water applications; smooth flow path assures quiet operation.

High Temperature Rating – The SSCX Series centrifugal pumps are designed for temperatures up to 185° F, making them an ideal choice for a wide range of pump applications and varying temperature conditions.

Mechanical Shaft Seal – Precision lapped and highly polished carbon-ceramic, stainless steel construction with buna elastomers, delivers long-life reliability.

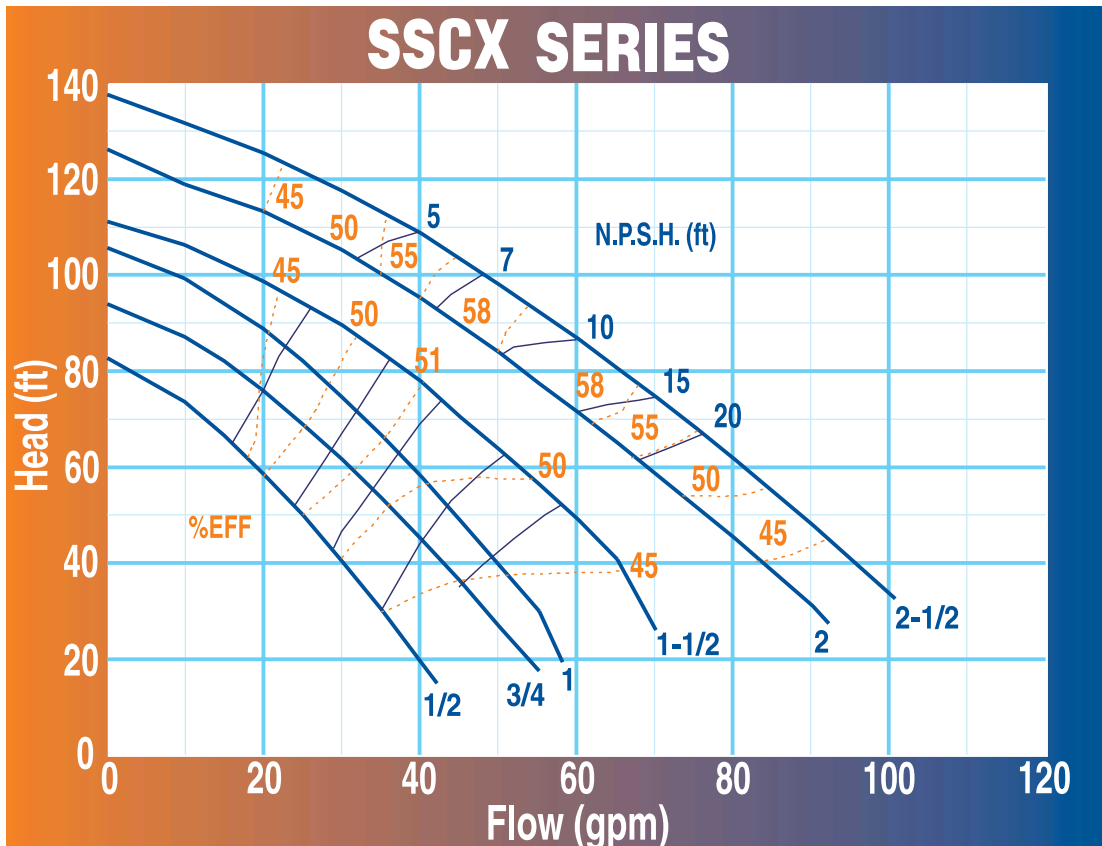
Multiple Seal Options – Choice of three seal options to meet a wide variety of pump applications.

Noryl Composite Impeller – Precision molded for perfect balance and lasting quality; ultra-smooth flow ports maximize performance and efficiency.

Drain/Vent Ports – Priming and draining is easier, faster.

Ordering Information

Model Number	HP	Voltage/ Phase	Enclosure	Suction Size	Discharge Size	Lbs/Kg
SS1XN-1/2	1/2	115/230-1	ODP	1-1/4"	1"	29/13
		230/460-3				
		115/230-1	TEFC			32/15
		230/460-3				
SS1XN-3/4	3/4	115/230-1	ODP	1-1/4"	1"	38/17
		230/460-3				
		115/230-1	TEFC			41/19
		230/460-3				
SS1XN-1	1	115/230-1	ODP	1-1/4"	1"	47/21
		230/460-3				
		115/230-1	TEFC			50/23
		230/460-3				
SS1XN-1½	1-1/2	115/230-1	ODP	1-1/4"	1"	62/28
		230/460-3				
		115/230-1	TEFC			65/30
		230/460-3				
SS1¼XN-2	2	230-1	ODP	1-1/2"	1-1/4"	77/35
		230/460-3				
		230-1	TEFC			80/36
		230/460-3				
SS1¼XN-2½	2-1/2	230-1	ODP	1-1/2"	1-1/4"	90/41
		230/460-3				
		230-1	TEFC			93/42
		230/460-3				



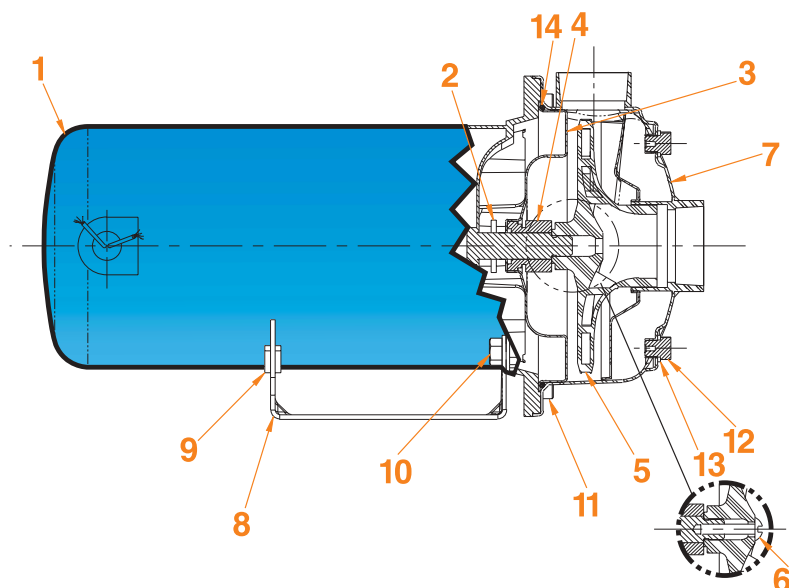
Seal Options

The standard seal in a SSCX series is a Buna Carbon/ Ceramic. The volute uses a Buna O-ring to seal the pumping chamber sections.

Viton with Carbon/ Ceramic faces, includes Viton O-ring change out in pump volute.

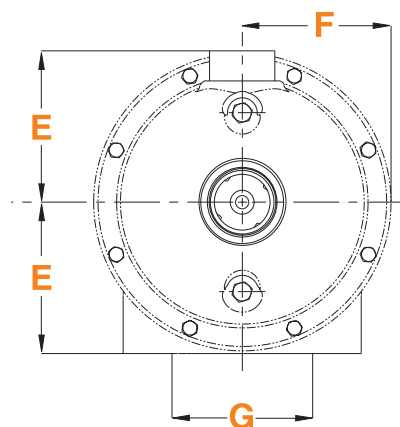
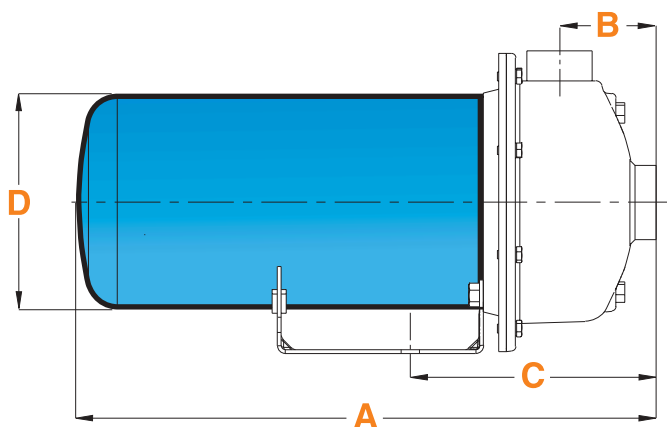
Viton with Carbon/Silicon Carbide faces, includes Viton O-ring change out in pump volute.

REMARKABLY COMPACT PUMP.



Materials of Construction

Item No.	Description	Material		
1	Motor			
2	Water Slinger	Neoprene		
3	Seal Plate	AISI 304 S.S.		
5	Impeller	Noryl/AISI 316 S.S.		
6	Impeller Locking Screw	18-8 S.S. (3 Phase Only)		
7	Casing	AISI 304 S.S.		
8	Base	Powder Painted Steel		
9	Isolator	Natural Rubber		
10	Socket Head Capscrew	Dry Zinc Phosphate Coated Steel		
11	Socket Head Capscrew	18-8 S.S.		
12	Vent/Drain Plug (Top & Bottom)	AISI 304 S.S.		
13	Gasket (Top & Bottom)	Nylon		
14	O-Ring	Buna-N (Viton With Seal Options 1 & 2)		
4	Mechanical Seal (Crane Type 6)			
	Rotary	Stationary	Elastomer	Metal Parts
Standard Seal	Carbon	Ceramic	Buna-N	18-8 S.S.
Option 1	Carbon	Ceramic	Viton	18-8 S.S.
Option 2	Carbon	Silicon-Carbide	Viton	18-8 S.S.



SSCX ODP (DIMENSIONS IN INCHES)

HP	NPT Suct.	NPT Disch.	A (1 phase)	A (3 phase)	B	C	D	E	F	G	Weight
1/2	1-1/4	1	13.2	13.5	2.43	6.51	5.63	4.13	4.06	4.875	29
3/4	1-1/4	1	13.2	13.5	2.43	6.51	5.63	4.13	4.06	4.875	38
1	1-1/4	1	14.2	14	2.43	6.51	5.63	4.13	4.06	4.875	47
1-1/2	1-1/4	1	14.5	14.5	2.43	6.51	5.63	4.13	4.06	4.875	62
2	1-1/2	1-1/4	16	15.7	2.63	6.71	5.63	4.13	4.06	4.875	77
2-1/2	1-1/2	1-1/4	16.9	16.4	2.63	6.71	5.63	4.13	4.06	4.875	90

SSCX TEFC (DIMENSIONS IN INCHES)

HP	NPT Suct.	NPT Disch.	A (1 phase)	A (3 phase)	B	C	D	E	F	G	Weight
1/2	1-1/4	1	14	14.2	2.43	6.51	6.44	4.13	4.06	4.875	32
3/4	1-1/4	1	14.9	14.2	2.43	6.51	6.44	4.13	4.06	4.875	41
1	1-1/4	1	15.7	15.2	2.43	6.51	6.44	4.13	4.06	4.875	50
1-1/2	1-1/4	1	16.2	15.2	2.43	6.51	6.44	4.13	4.06	4.875	65
2	1-1/2	1-1/4	16.4	16.4	2.63	6.71	6.44	4.13	4.06	4.875	80
2-1/2	1-1/2	1-1/4	16.9	16.4	2.63	6.71	6.44	4.13	4.06	4.875	93



RELAX,
IT'S A BERKELEY™

SSCX SERIES CENTRIFUGAL PUMPS

CHEMICAL COMPATIBILITY

Chemical Name	Concentration	Temperature Degree F	Noryl	304 SS	Buna
Acetic Acid	10%	78	A	A	B
	10%	185	A	A	B
	90%	78	A	A	D
	90%	185	A	A	D
Ammonia		78	A	A	D
Ammonium Hydroxide	10%	78	A	A	A
	10%	185	A	A	A
Ammonium Phosphate	Sat.	78	A	A	A
	Sat.	185	A	A	A
Antifreeze		78	A	A	A
		185	A	A	A
Cascade	10%	78	A	A	A
	10%	185	A	A	A
Chlorox		78	A	A	B
		185	A	A	B
Corn Oil		78	A	A	A
		185	A	A	A
Ethylene Glycol		78	A	A	A
Isopropyl Alcohol		78	A	A	D
		185	B	A	D
Kerosene		78	A	A	D
		185	A	A	D
Lestoil	2%	78	A	A	—
Linseed Oil		78	A	A	A
Methyl Alcohol		78	A	A	B
White Mineral Oil		78	B	A	A
		185	B	A	A
Nitric Acid		78	A	A	D
		185	A	A	D
Oleic Acid		78	A	A	D
Phosphoric Acid	60%	78	A	A	D
Potassium Bicarbonate	Sat.	78	A	A	A
	Sat.	185	A	A	A
Potassium Bicarbonate	Sat.	78	A	A	A
	Sat.	185	A	A	A
Potassium Hydroxide	50%	78	A	A	B
	50%	185	A	A	B
Silicon		78	A	A	A
		185	A	A	A
Sodium Bicarbonate	Sat.	78	A	A	A
	Sat.	185	A	—	A
Sodium Chloride	Sat.	78	A	A	A
	Sat.1	85	A	B	A
Sodium Hydroxide	10%	78	A	A	B
	50%	78	A	B	D
	98%	78	A	A	D
Transmission Fluid		78	A	A	A
		185	A	A	A
Water		78	A	A	A
		185	A	A	B
		212	B	A	B

The Berkeley difference – Everything we do shows up in the way Berkeley pump users look at us: with confidence. It's a confidence that goes from ordering to delivery to installation, on through years of trouble-free performance. It's a confidence that allows our customers to cure common pump worries and troubles with one simple phrase: Relax, it's a Berkeley™.



BEC: a Berkeley advantage – Berkeley's Electronic Catalog (BEC) puts powerful pump specification, application and installation



**PUMP SELECTION
MADE EASY.**

software right at our customer's fingertips 24 hours a day, every day. For more information about BEC, vertical multi-stage or any other Berkeley pump, contact your Berkeley distributor a Berkeley service representative at: 1-888-BERKELEY.

The Chemical Compatibility Chart is not intended to be a complete list. For more information on additional chemical compatibilities, consult with an authorized Berkeley Customer Service Representative.

For more information, call our toll-free number or visit our website at www.berkeleypumps.com



Member of
**Hydraulic
INSTITUTE**

RELAX,
IT'S A BERKELEY™