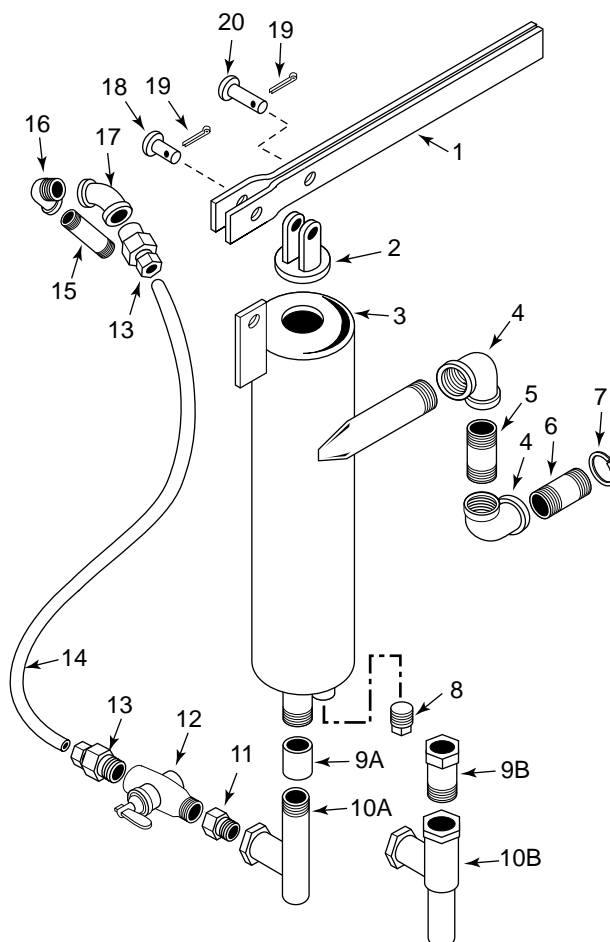


# ASSEMBLY INSTRUCTIONS

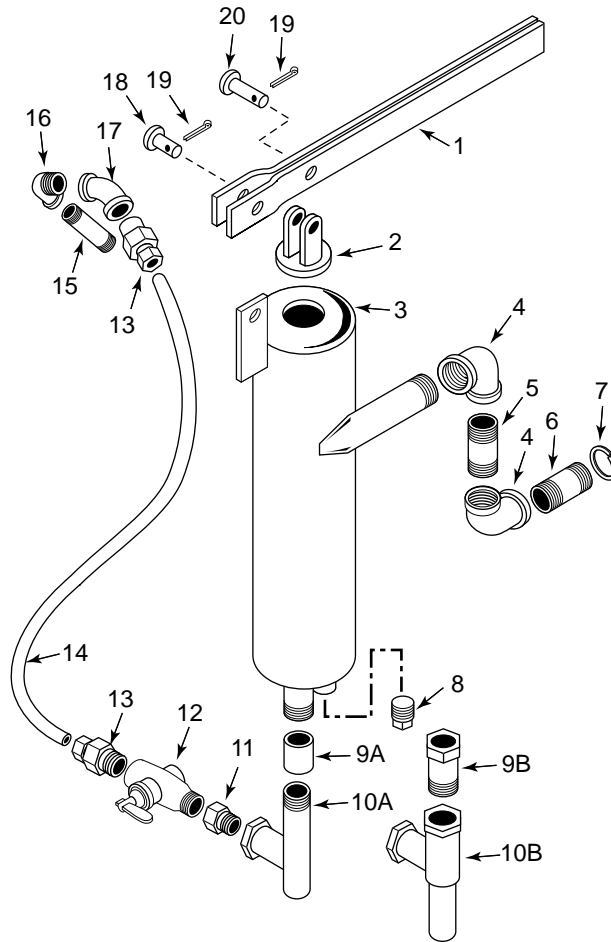
## B06591 / B06160 Exhaust Primers



1. Assemble canister (3), clack (2), and clack lever (1) using clevis pins (18,20) and cotter pins (19).
2. Install pipe plug (8) in bottom of canister.
3. Assemble exhaust piping (Model B06160 – 4,5; Model B06591 – 4,5,6,7) on engine exhaust port. Tighten all components into the position required except last elbow. Tighten the last elbow snug, ensuring it may be adjusted to accommodate the canister location.
4. Attach canister assembly to exhaust piping, tightening canister connection and last elbow of exhaust piping.
5. Attach coupling (9A) or bushing (9B) and ejector (10A or 10B) to bottom of canister. Ensure ejector connection is pointed toward pump.
6. Thread adapter (11 – Model B06591 only), valve (12), and compression fitting (13) to ejector canister assembly.
7. Assemble pump piping (15,16,17) and the second compression fitting (13) to pump suction, making sure that compression fitting (13) is pointed toward ejector canister assembly.
8. Carefully bend and cut copper tubing to make the connection between the ejector canister assembly connector and the pump piping connector.
9. Place fittings over each end of the copper tubing, install the tubing, and tighten compression fittings.



Berkeley Pumps • 293 Wright Street • Delavan, WI 53115



### Repair Parts List

Key No.	Part Description	Qty.	Model	
			B06160	B06591
1	Clack Lever	1	M05224	M05224
2	Clack	1	S14092	S15815
3	Primer Canister	1	H02303	H02735
4	1" FPT Galv. Iron 90° Str El	2	S25381	—
4	1-1/4" FPT Galv. Iron Str El	1	—	S25382
5	1" NPT x 2-1/2" Pipe Nipple	1	S22967	—
5	1-1/4" NPT x 2" Pipe Nipple	1	—	S35058
6	1" NPT x 3-1/2" Pipe Nipple	1	S34721	—
7	1" x 13/16" Conduit Locknut	1	S27573	—
8	1/2" NPT Pipe Plug	1	S23717	S23717
9A	1/2" NPT Pipe Coupling	1	S24264	—
9B	3/4 MPT x 1/2 FPT Galv. Steel Bushing	1	—	S24606
10A	Ejector	1	S14332	—
10B	Ejector	1	—	S15817
11	3/8 MPT x 1/4 Galv. Steel Bushing	1	—	S24601
12	1/4 FPT x 1/4 MPT Bronze Shutoff Valve	1	S34720	S34720
13	3/8" Male Compression Fitting	2	S24017	S24017
14	3/8" Copper Tubing	1	S22480	S22480
15	1/4" NPT x 3-1/2" Tube Steel Nipple	1	S27136	S27136
16	1/4 FPT Galv. Iron 90° Str El	1	S25377	S25377
17	1/4 FPT Galv. Iron 45° Str El	1	S25422	S25392
18	1/4" x 3/4" Clevis Pin	1	S28075	S28075
19	1/16" x 1/2" Cotter Pin	2	S26606	S26606
20	1/4" x 1" Clevis Pin	1	S28078	S28078