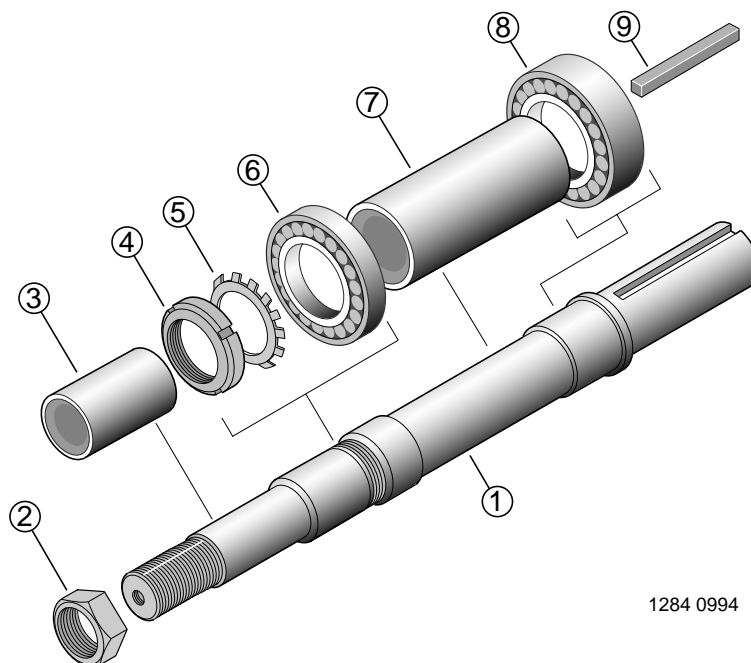


INSTALLATION INSTRUCTIONS

Shaft Replacement Kit

For B2-1/2ZR, B3ZR, and B6ZR Bracket Assembly (CCW)



1284 0994

GENERAL

Unpack shaft replacement kit and compare contents with the parts list above. Verify kit received is the correct rotation for your operation, kit is for pump with **counter-clockwise** rotation, shaft should have **left hand** threads.

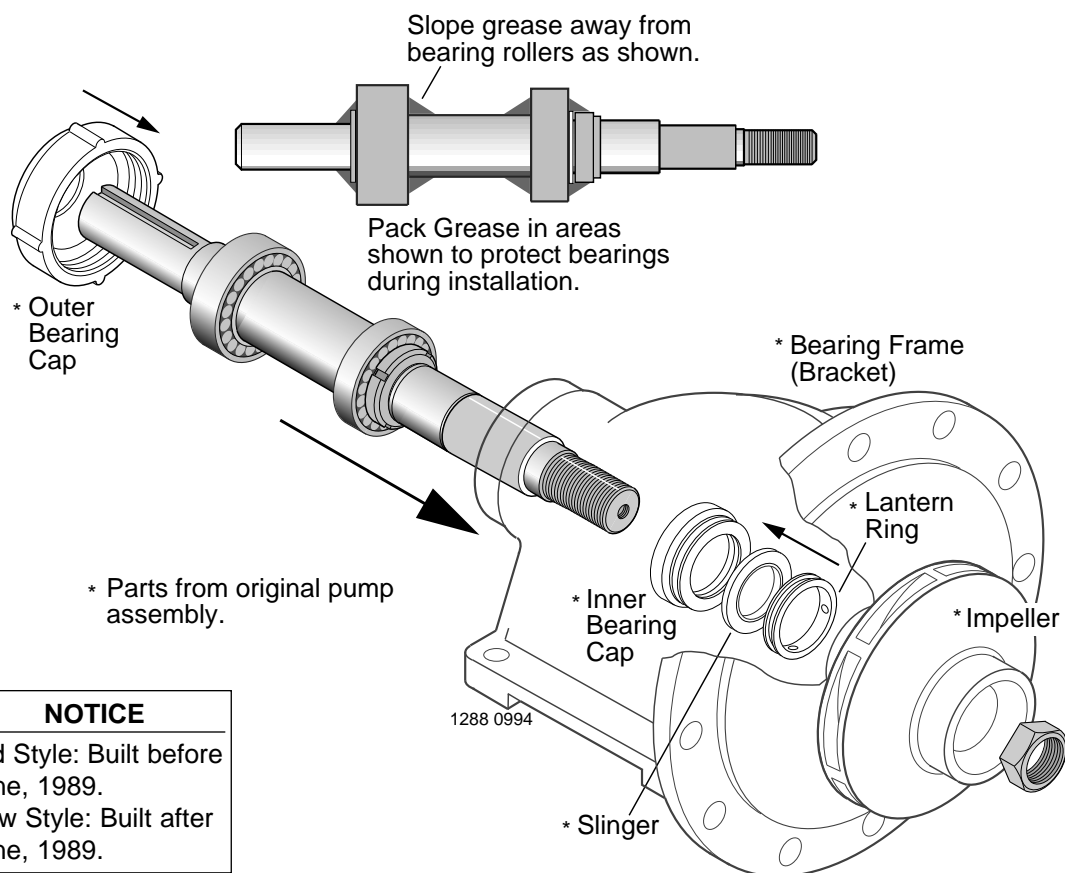
PARTS LIST

Ref. No.	Part Description	Old Style w/Packing B07481	New Style* w/Packing B66910	New Style w/Seal B66911
1	Pump shaft (CCW) 1-3/8" Dia.	M03403	M08627	M08627
2	Impeller locknut 7/8-9RH	—	U36-189SS	U36-189SS
3	Shaft Sleeve	S05127	S05127	S39242
4	Locknut	M10221	M10221	M10221
5	Lockwasher	S16181	S16181	S16181
6	Ball bearing	S13270	S13270	S13270
7	Bearing spacer	S08980	S08980	S08980
8	Ball bearing	S13271	S13271	S13271
9	Pulley key	S24255	S24255	S24255

* Model B6ZRM does not require locknut.



Berkeley Pumps • 293 Wright Street • Delavan, WI 53115



NOTICE

Old Style: Built before June, 1989.
New Style: Built after June, 1989.

INSTALLATION

1. Thoroughly steam clean or solvent wash the bearing cavity of bearing bracket to remove old grease and dirt. Check surface of bracket for cracks, extreme corrosion, or other defects that may make replacement of the bracket necessary.
2. Pack bearings with a lithium based NGLI No. 2 extra pressure ball bearing grease, ie: Shell brand Alvania Grease EP2. Force enough grease into each bearing to fill internal space between the races.
3. Coat the bearing bores of bracket with oil. Orient shaft kit in the direction shown above. Protect the bearings from contamination during installation by applying grease around bearings as shown. Slide shaft and bearing assembly into bearing bracket. When threaded end of pump shaft comes through inner bearing cap, place slinger and lantern ring over end of shaft. If packing gland is not of the split variety, place it over the shaft at this time as well. Slide shaft on through stuffing box until the first bearing makes contact with the bracket. Carefully align bearing with the bearing bore and press or tap bearing assembly into place. **Do not use excessive force.**
4. Screw outer bearing cap tightly against outer bearing race of double row bearing.
5. Inject grease into grease fittings to fill cavities behind bearings.
6. Reassemble pump parts and install unit. Refer to pump owners manual for correct installation procedures.