

CUSTOMER: _____

JOB NAME: _____

PO #: _____

SHIP TO: _____

QUOTE #: _____ QUANTITY: _____

_____/_____/_____
PLUMBING CONTRACTOR APPROVAL DATE

_____/_____/_____
GENERAL CONTRACTOR APPROVAL DATE

_____/_____/_____
ENGINEER APPROVAL DATE

_____/_____/_____
ARCHITECT APPROVAL DATE

To complete your order, this document must be signed and faxed to the Aquatic Centralized Customer Service Center.

Fax (866) 544-5353 • Phone (800) 945-2726

Int. Dim.	56 W x 30 1/4 D x 73 H (1420 x 770 x 1855)
Ext. Dim.	60 W x 33 1/4 D x 74 1/4 H (1525 x 845 x 1885)
Skirt Ht.	16 (405) skirt
Packaged Wt.	165 lbs. (75 kg.) gross
Material	Gelcoat
Warranty	Gelcoat Finished Products — Five Years

inches (mm)

STANDARD FEATURES

- Code compliant when fully equipped and installed according to guidelines
- Extra wide tub
- Integral toiletry shelves
- LH or RH drain location
- Slip resistant, textured bottom [ASTM F-462]

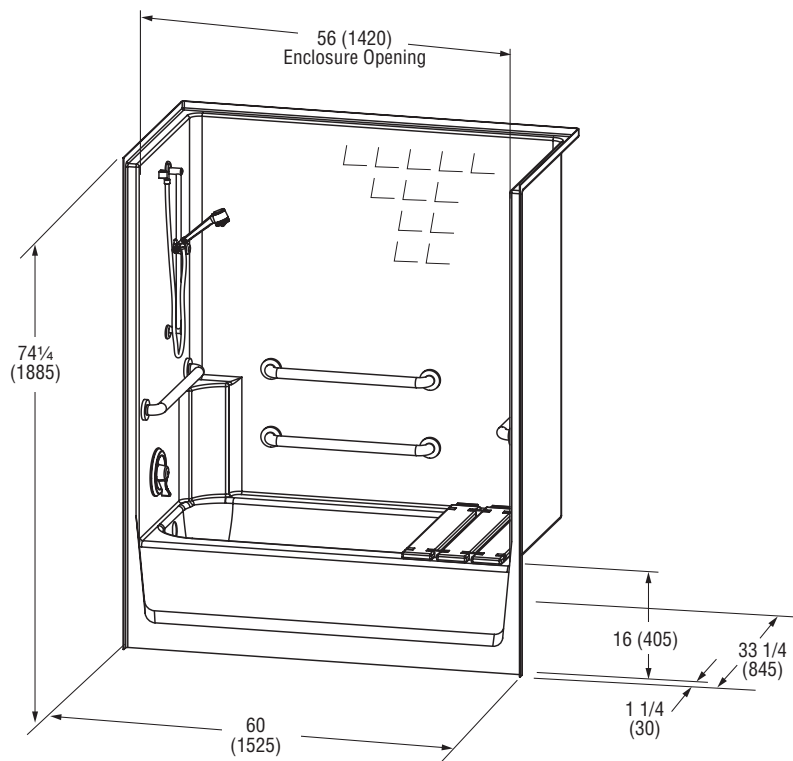
CONFIGURATION

- ☐ Fully equipped — ADA
- Includes 24 (610) grab bars, tri-fold removable seat, pressure balancing mixing valve and hand-held shower assembly per ADA guidelines

ADDITIONAL OPTIONS

- Fixture Wall: ☐ Left ☐ Right
- Straight 24 (610) grab bars [4]
- ☐ Stainless Steel ☐ Powder-Coated White
 - ☐ Tri-fold, plastic removable seat
 - ☐ Teakwood finish fold-up seat
 - ☐ Hand-held shower assembly with 24 (610) slide bar and 60 (1525) hose
 - ☐ Pressure balancing mixing valve
 - ☐ Curtain rod
 - ☐ Shower curtain
- Standard Colors: ☐ Almond ☐ Biscuit
- ☐ Bone ☐ Linen ☐ White ☐ Sterling Silver
 - ☐ Other _____
- ☐ Brass drain
- ☐ Additional accessories _____

For pricing of units and additional options, reference the Aquatic Price Book.



Submittal Sheet

Aquatic products may be specified as Lasco Bathware.



2603CTH ADA Compliant

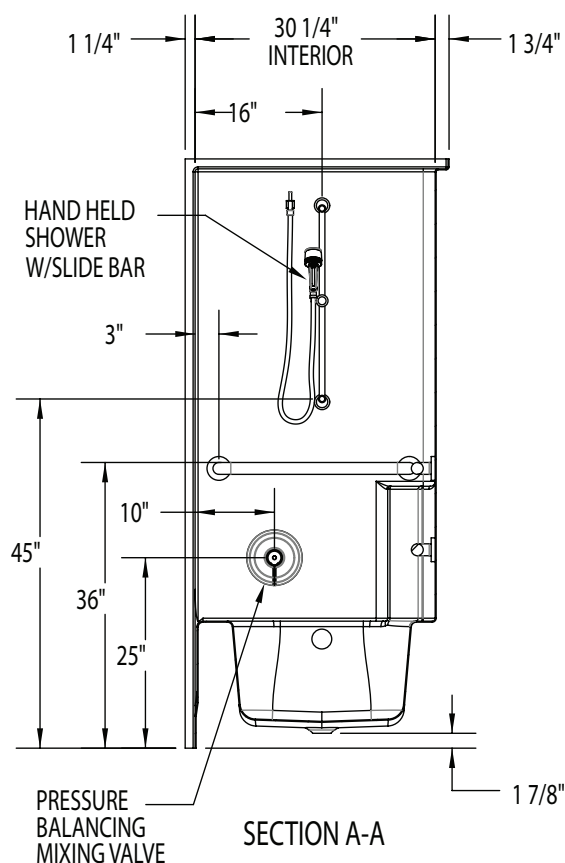
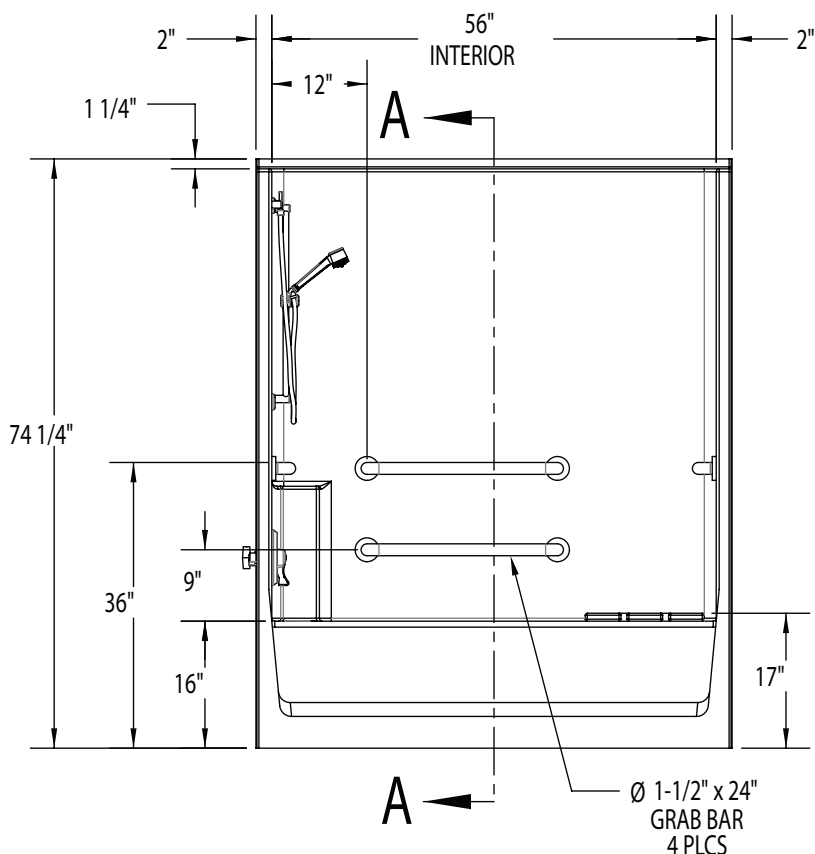
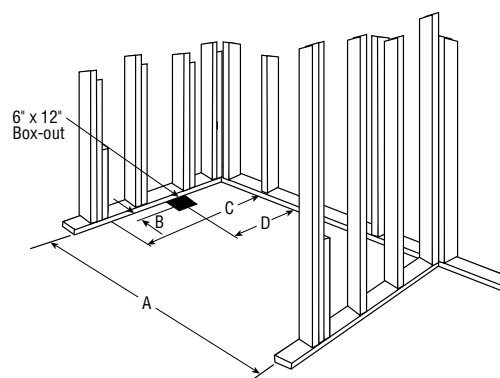
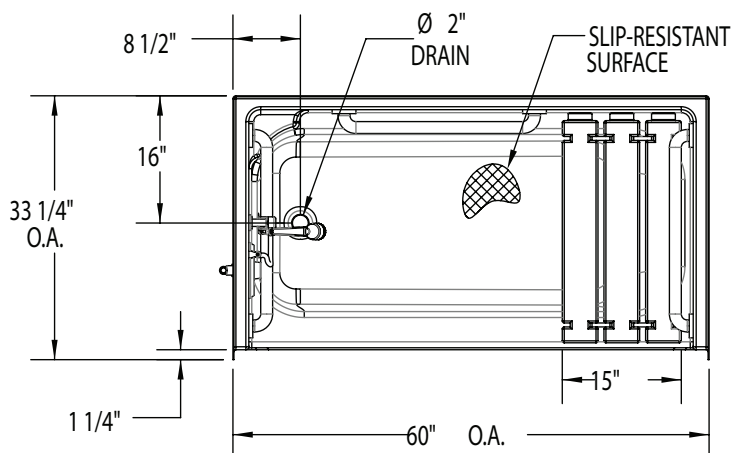
Please indicate changes needed.

FRAMING DIMENSIONS Inches (mm)

A	B	C	D
60 1/8 (1530)	8 1/2 (215)	33 1/4 (845)	16 (405)

Installation Options:

1. Install in a recessed pit for rough-in floor installation.
2. Build sub-floor to level finished floor with top of shower threshold.



Shell tolerance: +0, - 3/8"
All other tolerances: ±1"

FAX TO THE AQUATIC CENTRALIZED CUSTOMER SERVICE CENTER (866) 544-5353