

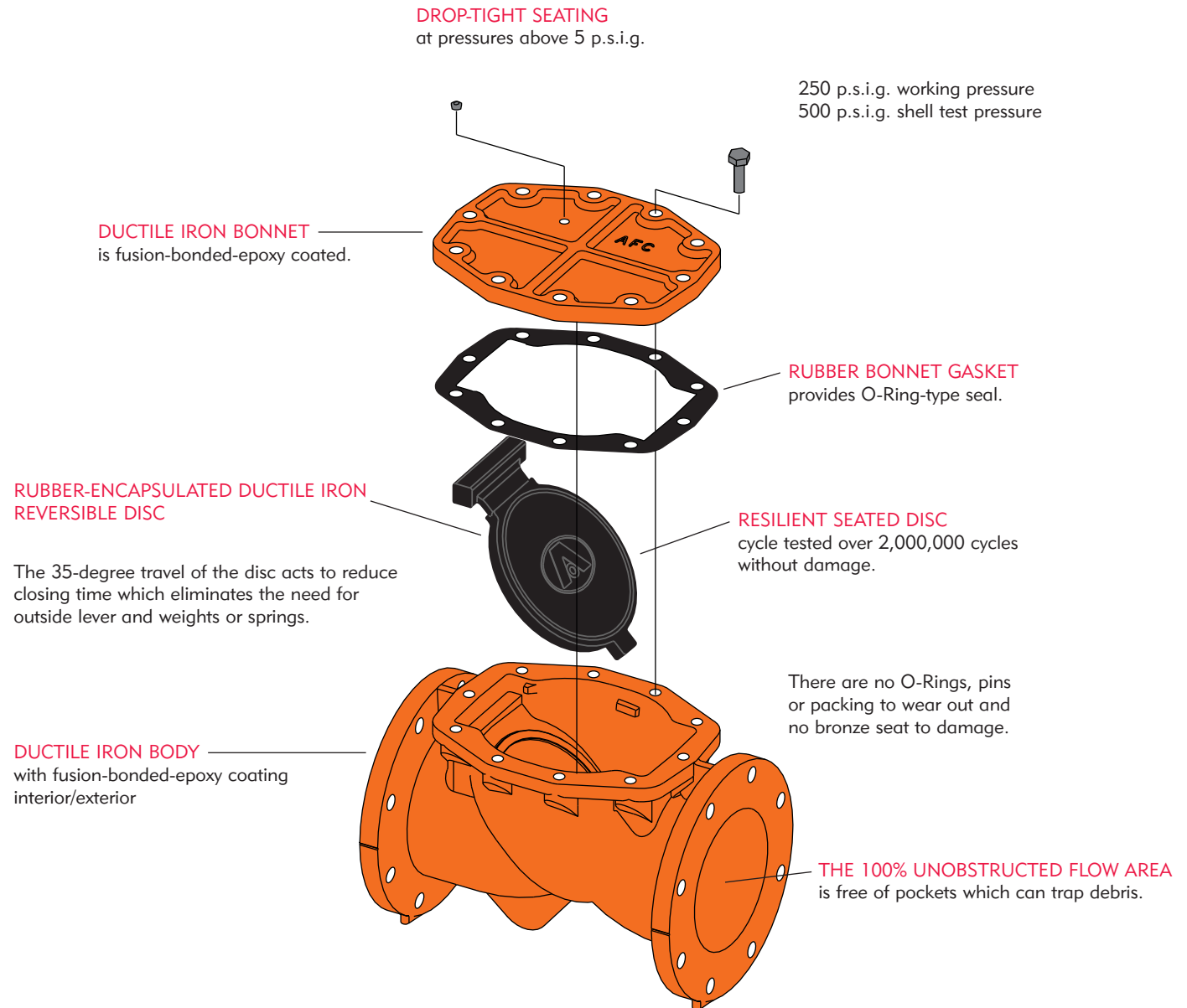
3" - 16"
SERIES 2100
RESILIENT SEATED CHECK VALVE

2120



AMERICAN FLOW CONTROL
It's What We Know.®

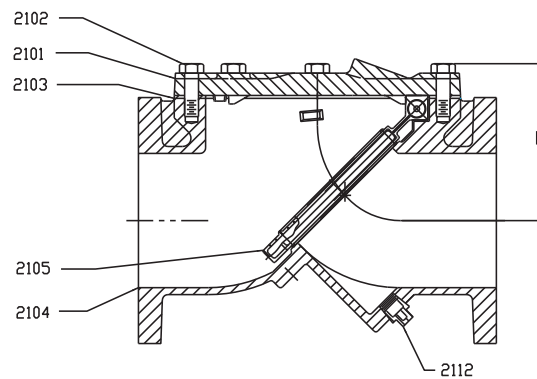
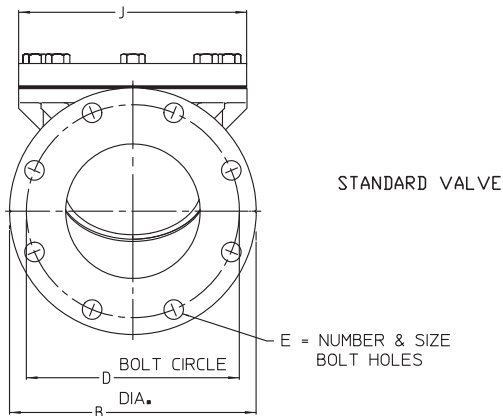
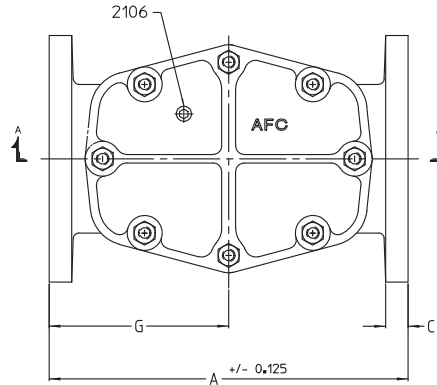
CONSTRUCTION



Suitable for buried service

SECTIONAL DRAWING/DIMENSIONS/PARTS LIST

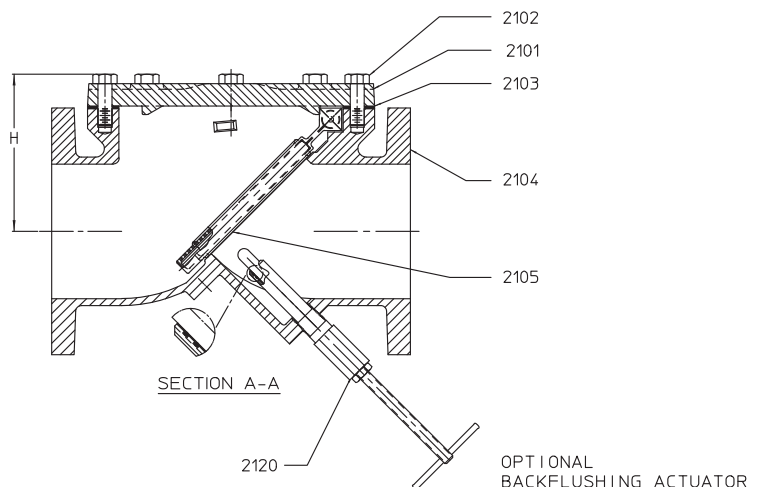
No.	Qty.	Part Name	Material
2101	1	Bonnet	Ductile Iron
2101 - IND	1	Bonnet	Ductile Iron
2102	Varies	Bonnet Bolts & Nuts	Stainless Steel
2103	1	Bonnet Gasket	Buna N
2104	1	Flanged Ends Body	Ductile Iron
2105	1	Disc	See Note 7
2106	1	Pipe Plug 3/8"	Stainless Steel
2112	1	Pipe Plug Sq. Head	Stainless Steel
2120	1	Backflushing Actuator	Assembly



Size	A	B	C	D	E	G	H	J
3	11	7-1/2	3/4	6	4 - 5/8	5-1/2	4-1/2	5-5/16
4	13	9	15/16	7-1/2	8 - 3/4	6-1/2	5-3/16	6-3/4
6	16	11	1	9-1/2	8 - 7/8	8	7	10-1/4
8	19-1/2	13-1/2	1-1/8	11-3/4	8 - 7/8	9-3/4	8-13/32	12-1/16
10	24-1/2	16	1-3/16	14-1/4	12 - 1	12-1/4	10-3/16	14-7/8
12	27-1/2	19	1-1/4	17	12 - 1	13-3/4	11-15/16	17-5/8

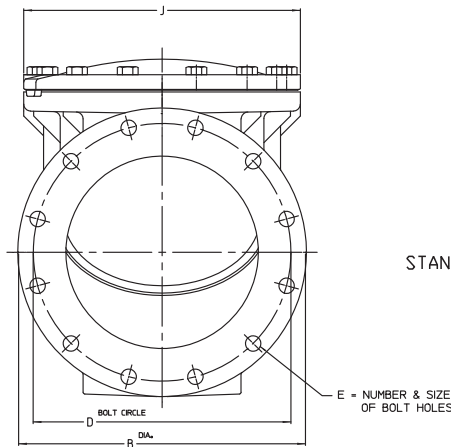
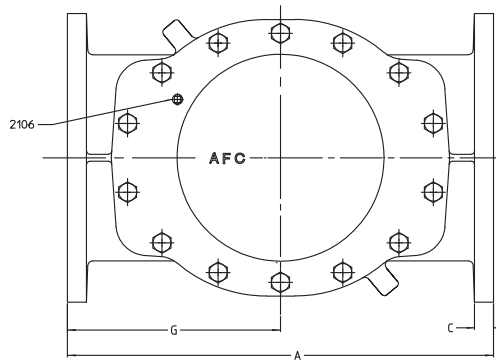
NOTES:

1. Series 2100 Check Valves meet or exceed requirements of ANSI/AWWA C508.
2. 250 p.s.i.g. rated working pressure, 500 p.s.i.g. test pressure.
3. End flanges in accordance with ANSI/AWWA C110/A21.10 or ANSI B16.1, Class 125.
4. Body and bonnet coated with fusion-bonded-epoxy coating in compliance with ANSI/AWWA C550.
5. Valves have manufacturer's name, pressure class and year of manufacture cast on body or bonnet.
6. Ductile iron is ASTM A536 grade 65-45-12.
7. Disc is ductile iron with stainless steel shaft and nylon reinforcement, encapsulated with EPDM rubber.
8. 3"-16" valves are certified to ANSI/NSF Standard 61.

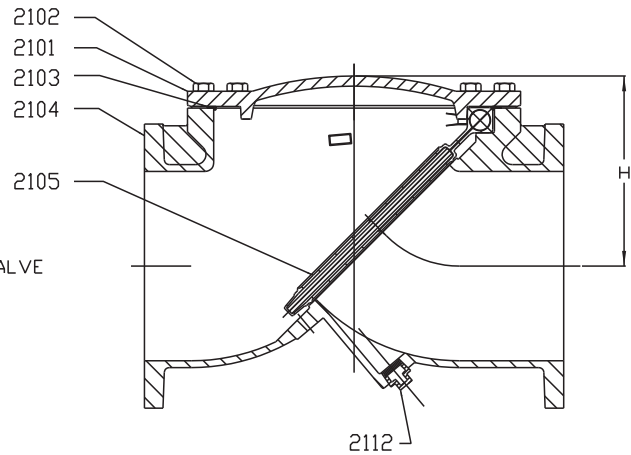


SECTIONAL DRAWING/DIMENSIONS/PARTS LIST

No.	Qty.	Part Name	Material
2101	1	Bonnet	Ductile Iron
2101 - IND	1	Bonnet	Ductile Iron
2102	Varies	Bonnet Bolts & Nuts	Stainless Steel
2103	1	Bonnet Gasket	EPDM
2104	1	Flanged Ends Body	Ductile Iron
2105	1	Disc	See Note 7
2106	1	Pipe Plug Sq. Head	Stainless Steel
2112	1	Pipe Plug Sq. Head	Stainless Steel
2120	1	Backflushing Actuator	Assembly



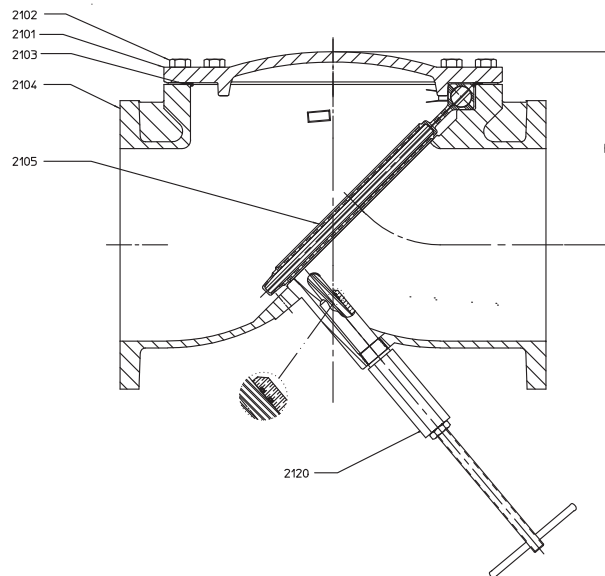
STANDARD VALVE



Size	A	B	C	D	E	G	H	J	Wt.
14	31	21	1-3/8	18-3/4	12 - 1-1/8	15-1/2	14-3/16	20-1/8	558
16	34	23-1/2	1-7/16	21-1/4	16 - 1-1/8	17	15-5/8	22-7/8	778

NOTES:

1. Series 2100 Check Valves meet or exceed requirements of ANSI/AWWA C508.
2. 250 p.s.i.g. rated working pressure, 500 p.s.i.g. test pressure.
3. End flanges in accordance with ANSI/AWWA C110/A21.10 or ANSI B16.1, Class 125.
4. Body and bonnet coated with fusion-bonded-epoxy coating in compliance with ANSI/AWWA C550.
5. Valves have manufacturer's name, pressure class and year of manufacture cast on body or bonnet.
6. Ductile iron is ASTM A536 grade 65-45-12.
7. Disc is ductile iron with stainless steel shaft and nylon reinforcement, encapsulated with EPDM rubber.
8. 3"-16" valves are certified to ANSI/NSF Standard 61.



FEATURES/BENEFITS/SPECIFICATIONS

FEATURES

The American Flow Control **Series 2100** Resilient Seated Check Valve is simple, durable and eliminates most problems associated with metal seated swing check valves. The **Series 2100** features a compact ductile iron body and bonnet. Ductile iron has more than twice the strength of gray iron.

The disc is made of ductile iron

encapsulated with EPDM rubber. The **Series 2100 Valve** is rated for 250 p.s.i.g. The valve seals 100% drop tight at pressures above 5 p.s.i.g. The waterway is unobstructed and free from pockets.

This valve is designed to minimize disc slam. The disc only has to travel 35 degrees from full open to full closed.

This allows the valve to close before flow reversal in most applications.

There is only one moving part, making this valve virtually maintenance free. Should the disc be damaged, it can be reversed and the valve put back into immediate service.

BENEFITS

The **Series 2100 Resilient Seated Check Valve** has these advantages over metal seated swing check valves:

- 250 p.s.i.g. rating
- Ductile iron body, bonnet & disc
- Fusion-bonded-epoxy coating inside & outside
- Does not require outside lever & weights or springs
- Only one moving part
- No O-Rings, packing, pins or bearings to wear out
- No bronze seat ring to wear or need replacing
- Drop-tight shutoff at pressures above 5 p.s.i.g.
- Suitable for buried service
- The 100% unobstructed flow area is free of pockets which can trap debris.
- A factory-installed backflushing actuator can be furnished as an option. This device is useful for priming pumps, backflushing, draining lines and system testing.



SPECIFICATIONS

Resilient seated check valves shall be manufactured from ductile iron meeting or exceeding ASTM A536 65-45-12. Valves shall be rated for 250 p.s.i.g. cold water working pressure.

Valves shall have a ductile iron disc fully encapsulated with rubber. Disc travel to closure shall not be more

than 35 degrees and shall seal drop tight at pressures above 5 p.s.i.g.

Valves to be coated with fusion-bonded epoxy on all internal and external ferrous surfaces.

Bronze seat rings are not allowed. Disc shall be the only allowable moving part. No O-Rings, pivot pins or other bearings are allowed. Disc

must be reversible such that either side will seal equally.

Valves shall be equal to American Flow Control's **Series 2100 Ductile Iron Resilient Seated Check Valve**.



American Flow Control

American-Darling Valve and Waterous

A Division of American Cast Iron Pipe Company

<http://www.acipco.com/afc>

American-Darling Valve

P.O. Box 2727

Birmingham, AL 35202-2727

Phone: 1-800-326-7861

Fax: 1-800-610-3569

e-mail: bpatton@acipco.com

Waterous Company

125 Hardman Avenue South

South St. Paul, MN 55075-1191

Phone: 1-888-266-3686

Fax: 1-800-601-2809

e-mail: medybedahl@waterousco.com

Distributed By: