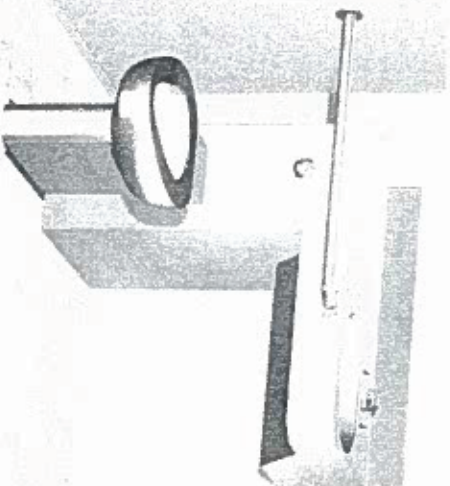




Penal-Ware® 1435 Series

ADA Compliant - Lav/Toilet Comby - Offset Toilet Bowl



1435-ADA-LO-2-DMS-04

Fixture May Show Some Available Options

Please visit www.acorneng.com for most current specifications.

ADA Compliant - Lav/Toilet Comby - Offset Toilet Bowl

Fixture is arranged to be installed on finished wall and serviced from an accessible pipe chase. Fixture is fabricated from 14 gage, type 304 stainless steel cabinet and toilet bowl, polished to a satin finish. The inside of the toilet bowl also has a satin finish. Cabinet interior is sound deadened with fire-resistant material. Access panels are provided to service flush valve and lavary valve pushbuttons. Optional Wall Sleeve or Metal Template is recommended for all installations to provide required wall openings. Unit complies with ADA requirements regarding toilets and lavatory fixtures. Compliance is subject to the interpretation and requirements of the local code authority.

Lavatory Oval Bowl is 14-3/4" x 9-1/2" x 5" deep. Standard P-trap waste outlet is 1-1/2" O.D. plain end.

Spouts or Bubblers are located on the deck to the rear of the bowl with valve controls located to the right and/or left of the spout or bubbler. Location of the spout or bubbler on the fixture does not fulfill ADA Drinking Fountain requirements.

Optional Valve may be an Air-Control pneumatically operated, pushbutton valve with 1.4 GPM flow control. Pushbutton requires less than 5 lbs. to activate valve. Valve is metering, non-hold open type. Timing is from 5 to 60 seconds. Valve can be remotely located up to 10 feet from the operating pushbutton. Includes deck-mounted spout. Valve complies with the lead free requirements of NSF 61, Section 9-1997.

Toilet is blowout jet type with elongated bowl manufactured to ANSI 112.19.2M requirements and requires a minimum of 35 PSI flow pressure. Toilet uses a water consumption of 1.6 gallons per flush or less. Trap has a minimum 3-1/2" seal and will pass a 2-1/8" ball. Toilet waste outlet is 2-3/8" diameter plain end extending 3" beyond the back of fixture for wall outlet and Gasketed Waste for floor outlet. Unit is provided with a hydraulically actuated flush valve (shipped loose).

Grab Bar is heavy gage type 304 stainless steel construction, 1-1/2" diameter x 36" long. Grab bar is positioned behind toilet and is field installed to cabinet and to wall.

GUIDE SPECIFICATION

Provide and install Acorn Penal-Ware ADA Compliant Lav/Toilet-Comby-Offset Toilet Bowl (specify model number and options). Unit shall conform with ADA requirements. Fixture shall be fabricated from type 304 stainless steel. Construction shall be seamless welded and exposed surfaces shall have a satin finish. Provide 36" long stainless steel grab bar to be located behind toilet. Fixture shall have an Air-Control pneumatically operated, metering, non-hold open pushbutton valve. Valve shall require less than 5 lbs. to activate. Valve to comply with NSF 61, Section 9-1997 lead free requirements. Toilet shall be concealed blowout jet type with an elongated bowl, a self-draining flushing rim, and an integral contoured seat. Toilet shall meet ANSI 112.19.2M requirements, using an average water consumption of 1.6 gallons per flush or less. Toilet trap shall have a minimum 3-1/2" seal that shall pass a 2-1/8" diameter ball and be fully enclosed. Cabinet interior is to be sound deadened with fire-resistant material. Fixture shall withstand loadings of 5,000 pounds without permanent damage. Fixture shall be furnished with necessary fasteners for proper installation.



Penal-Ware® 1435: ADA Compliant - Lay/Toilet Comby - Offset Toilet Bowl

WALL THICKNESS AND TYPE (Must Specify)
 Thickness _____ Type: _____ Concrete _____ Block _____ Steel _____

MODEL AND OPTIONS SELECTION

☐ - 1435 35" ADA Lav-Toilet Comby

TOILET ORIENTATION (Must Specify)

☐ - LO
☐ - RO

FIXTURE MOUNTING AND WASTE (Must Specify)

<input checked="" type="checkbox"/> - 2	On-Floor, Wall Outlet
<input type="checkbox"/> - 3	On-Floor, Floor Outlet

SPOUT SELECTION (Must Specify)

☐ - DMS Deck Mounted Spout
☐ - DMB Deck Mounted Bubble (In Lieu of Spout)
 (Does not fulfill ADA Drinking Fountain requirements)

Code Rubber

✓ - BPH Hemispherical Penal Puddler

VALVE SELECTION (Must Specify)

☐ - 03 Air-Control, Single Temperature
☒ - 04 Air-Control, H & C
☐ - 09 Punched for Valve by Others

☐ - EV51 Electronic Valve System - Single Temp

Time·Traf - Single Temp

□ - MVCL-BAT Time-Trol - Single Temp, BAT C

☐ - MYC2 Time-Trial - Hot & Cold

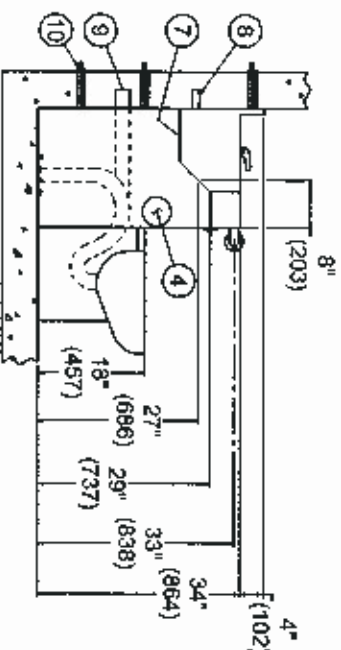
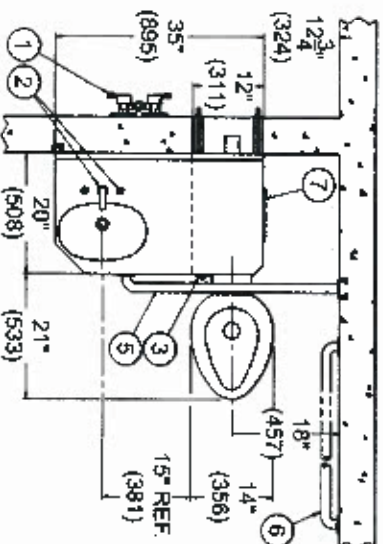
FLUSH VALVE GPF's (Must Specify)

☒ 1.6 GPF
☐ 3.5 GPF

FLUSH VALVE REQUIREMENTS (Must Specify)

- ☒ - FV Hydraulic
- ☐ - EVSPV Master-Trol Flush Valve
- ☐ - MCVFV Time-Trol Flush Valve

Please visit www.bacorn.org.com for most current specifications.



1435ADA-RO-2-DMS-04 SHOWN (LO OPPOSITE)

NOTES:

1. Optional .04 Air-Control Valve.
2. Deck Mounted Spool & Pushbutton.
3. Flush Valve Pushbutton.
4. Optional .PH Recessed Paper Holder
5. Grab Bar 36" Long.
6. 42" Long ADA req'd Grab Bar.
7. Access Panels.
8. Lavy Waste Outlet.
9. Toilet Waste Outlet.
10. Wall Mounting Hardware.

Important: Installation instructions and current rough-in are furnished with each fixture. Do not rough-in without certified dimensions. Return to manufacturer's website at www.hiway.com for more information. Do not use for use in or on supervised areas. © Copyright 2008 Acorn Engineering Company

Important installation instructions and current rough-in are furnished with each fixture. Do not rough-in without certified dimensions.
 Dimensions are subject to manufacturer's tolerance of plus or minus 2 1/8" and change without notice. Meter dimensions and responsibility for use of trade or superseded data. © Copyright 2008 Acorn Engineering Company

Selection Summary Model No. & Option _____ Quantity _____	Approved for Manufacturing Company _____ Title _____ Signature _____ Date _____
--	--