



Penal-Ware® 1675 Series Blowout Jet Toilet - Off-Floor



1675-W-1

Fixture May Show Some Available Options

Please visit www.acorneng.com for most current specifications.

Blowout Jet Toilet - Off-Floor

Fixture is arranged to be installed on finished wall and serviced from an accessible pipe chase. Optional Wall Sleeve or Metal Template is recommended for all installations for required wall openings. Toilet bowl is fabricated from 14 gage, type 304 stainless steel and is seamless welded construction. Wall flange is structurally reinforced. Exterior is polished to a satin finish. The inside of the toilet bowl also has a satin finish. There are no accessible voids or crevices where contraband can be concealed.

Toilet is a blowout jet type with an elongated bowl manufactured to ASME A112.19.3-2008 and CSA B45.4-2008 requirements and will flush with a minimum of 25 PSI flow pressure when used in conjunction with a minimum of 1.6 gpf. Trap has a minimum 3-1/2" seal and will pass a 2-1/8" ball. Toilet waste outlet is 2-3/8" diameter plain end extending 3" beyond the back of the unit.

Regularly Furnished items include mounting hardware for walls up to 8" thick.

GUIDE SPECIFICATION

Provide and install Acorn Penal-Ware Blowout Jet Toilet (specify model number and options). Toilet bowl shall be fabricated from 14 gage, type 304 stainless steel. Construction shall be seamless welded and exposed surfaces shall have a satin finish. Toilet shall be concealed blowout jet type with an elongated bowl, a self-draining flushing rim, and an integral contoured seat. Toilet shall meet ASME A112.19.3-2008 and CSA B45.4-2008 requirements and will flush with a minimum of 25 PSI flow pressure when used in conjunction with a minimum of 1.6 gpf. Toilet trap shall have a minimum 3-1/2" seal that shall pass a 2-1/8" diameter ball and be fully enclosed. Fixture shall withstand loadings of 3,000 pounds without permanent damage. Fixture shall be furnished with necessary fasteners for proper installation.



Penal-Ware® 1675: Blowout Jet Toilet - Off-Floor

WALL THICKNESS AND TYPE (Must Specify)

Thickness: _____ Type: ☐ Concrete ☐ Block ☐ Steel

MODEL NUMBER AND OPTIONS SELECTION:

BASE MODEL NUMBER

☐ - 1675 Blowout Jet Toilet

SUPPLY (Must Specify)

☐ - T Top (Exposed)
☐ - W Wall (Concealed)

FIXTURE MOUNTING AND WASTE (Must Specify)

☐ - 1 Off-Floor, Wall Outlet

FLUSH VALVE GPFs (Must Specify)

☐ - HET 1.28 GPF
☐ - ULF 1.6 GPF
☐ - 3.5 GPF

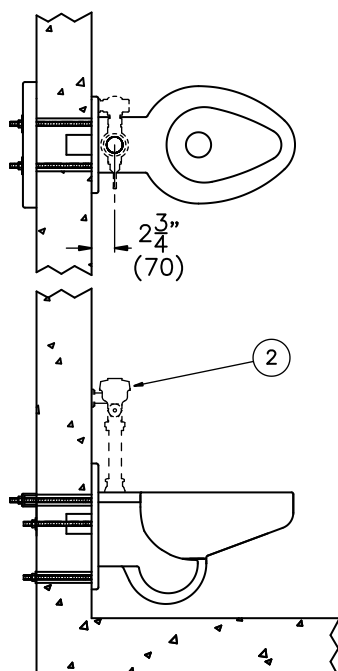
FLUSH VALVE OPTIONS (Must Specify)

☐ - EVSFV Master-Trol Flush Valve
 (N/A for Top Supply)
☐ - FV Flush Valve (N/A for ADA)
☐ - FVBO Flush Valve by Others
☐ - FVC Cover, Flush Valve
 (N/A for ADA, Top Supply Only)
☐ - FVCH Cover, Hydraulic Flush Valve
 (Top Supply Only)
☐ - FVH Flush Valve, Hydraulic
☐ - FVL Flush Valve, Lever Handle
 (Top Supply Only)
☐ - MCVFV Time-Trol Flush Valve
 (N/A for Top Supply)

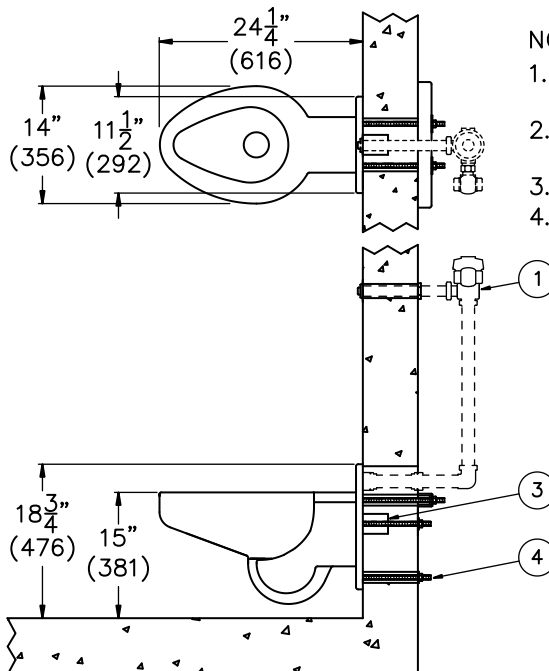
Please visit www.acorneng.com
 for most current specifications.

PRODUCT OPTIONS (Must Specify)

☐ - ADA ADA Compliant - 18" Integral Seat Height
☐ - CO1 Cleanout w/O-Ring Connecting to No-Hub 4"
 (-PE Only)
☐ - CO1-3 Cleanout w/ O-Ring Connecting to No-Hub 3"
 (-PE Only, N/A with -WO3)
☐ - COH Cleanout Hook Assembly
☐ - EG Enviro-Glaze, Specify Color: _____
☐ - Toilet Exterior Only
☐ - Toilet Interior
☐ - FT Flood-Trol (Manual Reset)
☐ - FTA Flood-Trol Auto-reset
☐ - FTE Flood-Trol Electronic
☐ - FVT Flush Valve Thru Wall Connector
☐ - GW Gasketed Toilet Waste
☐ - HET High Efficiency Toilet Design
☐ - HPS High Polished Seat #7 Finish
☐ - HS Hinged Seat (N/A with -FVC Options)
☐ - MT Metal Template (Only 1 Required Per Project)
☐ - PC Pinned Cleanout Plug
☐ - PFS Punched for Hinged Seat by Others
☐ - PH Paper Holder (Available Only with -FVC)
☐ - SW Wall Sleeve
☐ - TF Transformer, 120VAC to 24VAC
☐ - TSC Toilet Shipping Cover
☐ - TWE Toilet Waste Extension (3" Standard)
 Specify Length Beyond Fixture: _____
☐ - VAC Acorn Vac System
☐ - WO3 3" Toilet P-Trap (3.5 GPF Only)
☐ - WO3B 3" Bell Waste Outlet w/ Std. 2-3/8" Trap
 (1.6 or 3.5 GPF)



1675-T-1



1675-W-1

NOTES:

1. Optional -FV Flush Valve - Wall Supply.
2. Optional -FV Flush Valve - Top Supply.
3. Toilet Waste Outlet.
4. Wall Mounting Hardware.

<p>Important: Installation instructions and current rough-in are furnished with each fixture. Do not rough in without certified dimensions. Dimensions are subject to manufacturer's tolerance of plus or minus 1/4" and change without notice. Acorn assumes no responsibility for use of void or superseded data. © Copyright 2009 Acorn Engineering Company</p>	
<p>Selection Summary</p> <p>Model No. & Option _____</p> <p>Quantity _____</p>	<p>Approved for Manufacturing</p> <p>Company _____ Title _____</p> <p>Signature _____ Date _____</p>