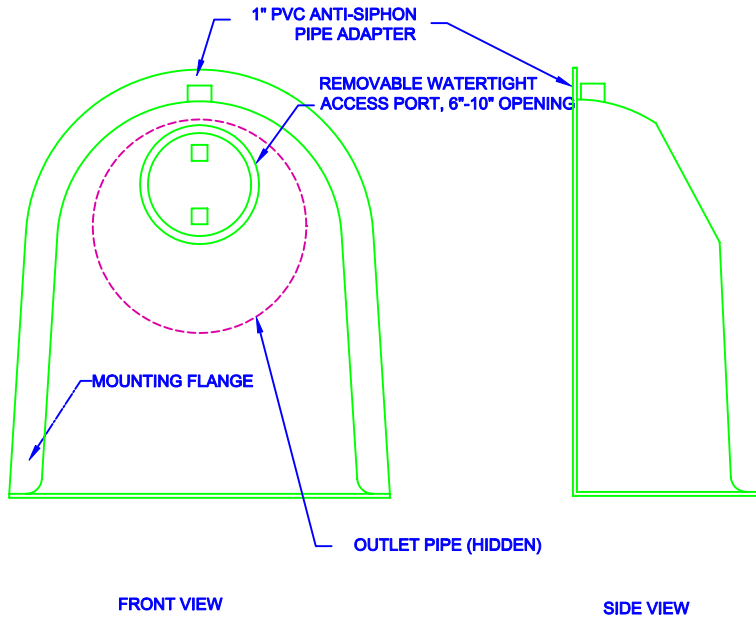
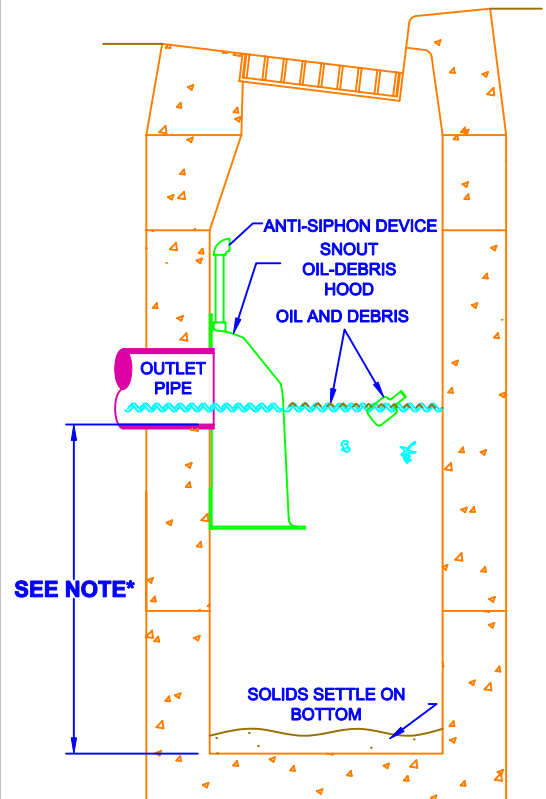


### CONFIGURATION DETAIL



SNOUT OIL-WATER-DEBRIS SEPARATOR

### TYPICAL INSTALLATION



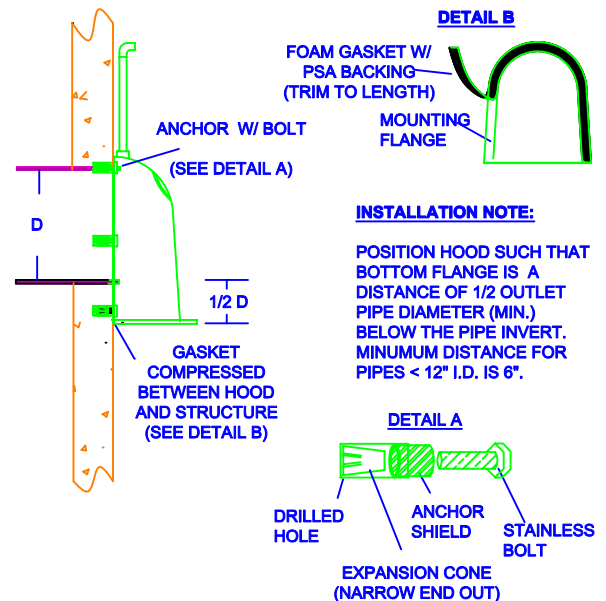
\*NOTE- SUMP DEPTH OF 36" MIN. FOR  $\leq 12"$  DIAM. OUTLET. FOR OUTLETS  $> 15"$ , DEPTH = 2.5-3X DIAM.

### NOTES:

- ALL HOODS AND TRAPS FOR CATCH BASINS AND WATER QUALITY STRUCTURES SHALL BE AS MANUFACTURED BY:  
BEST MANAGEMENT PRODUCTS, INC.  
53 MT. ARCHER RD.  
LYME, CT 06371  
(860) 434-0277, (860) 434-3195 FAX  
TOLL FREE: (800) 504-8008 OR (888) 354-7585  
WEB SITE: [www.bestmp.com](http://www.bestmp.com)  
OR PRE-APPROVED EQUAL
- ALL HOODS SHALL BE CONSTRUCTED OF A GLASS REINFORCED RESIN COMPOSITE WITH ISO GEL COAT EXTERIOR FINISH WITH A MINIMUM 0.125" LAMINATE THICKNESS.
- ALL HOODS SHALL BE EQUIPPED WITH A WATERTIGHT ACCESS PORT, A MOUNTING FLANGE, AND AN ANTI-SIPHON VENT AS DRAWN. (SEE CONFIGURATION DETAIL)
- THE SIZE AND POSITION OF THE HOOD SHALL BE DETERMINED BY OUTLET PIPE SIZE AS PER MANUFACTURER'S RECOMMENDATION.
- THE BOTTOM OF THE HOOD SHALL EXTEND DOWNWARD A DISTANCE EQUAL TO 1/2 THE OUTLET PIPE DIAMETER WITH A MINIMUM DISTANCE OF 6" FOR PIPES  $< 12"$  I.D.
- THE ANTI-SIPHON VENT SHALL EXTEND ABOVE HOOD BY MINIMUM OF 3" AND A MAXIMUM OF 24" ACCORDING TO STRUCTURE CONFIGURATION.
- THE SURFACE OF THE STRUCTURE WHERE THE HOOD IS MOUNTED SHALL BE FINISHED SMOOTH AND FREE OF LOOSE MATERIAL.
- THE HOOD SHALL BE SECURELY ATTACHED TO STRUCTURE WALL WITH  $3/8"$  STAINLESS STEEL BOLTS AND OIL-RESISTANT GASKET AS SUPPLIED BY MANUFACTURER. (SEE INSTALLATION DETAIL)
- INSTALLATION INSTRUCTIONS SHALL BE FURNISHED WITH MANUFACTURER SUPPLIED INSTALLATION KIT.  
INSTALLATION KIT SHALL INCLUDE:  
A. INSTALLATION INSTRUCTIONS  
B. PVC ANTI-SIPHON VENT PIPE AND ADAPTER  
C. OIL-RESISTANT CRUSHED CELL FOAM GASKET WITH PSA BACKING  
D.  $3/8"$  STAINLESS STEEL BOLTS  
E. ANCHOR SHIELDS

US Patent # 6126817

### INSTALLATION DETAIL



## HOOD SPECIFICATION FOR CATCH BASINS AND WATER QUALITY STRUCTURES

| DESCRIPTION   | DATE     | SCALE |
|---|----------|-------|
| OIL- DEBRIS HOOD SPECIFICATION AND INSTALLATION (TYPICAL) | 09/08/00 | NONE  |
| DRAWING NUMBER<br>SP-SN                                   |          |       |